

LOM OS 515	APP CRS 093°	Rwy Idg 5004
		TDZE 905
		Apt Elev 905

NDB RWY 9R

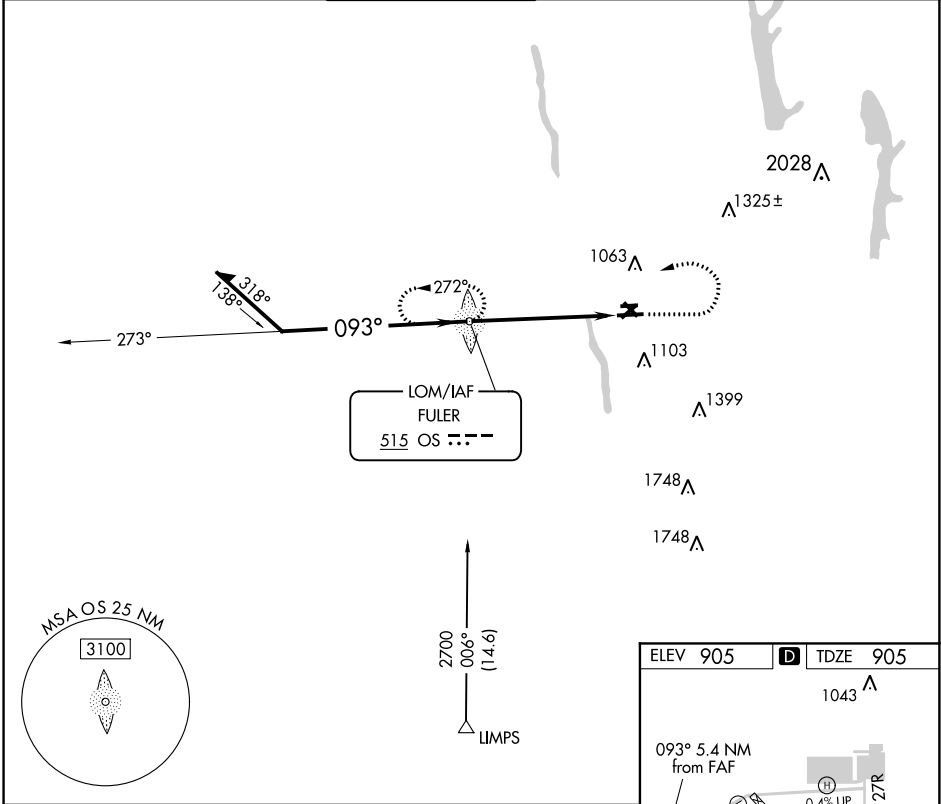
OHIO STATE UNIVERSITY (OSU)

⚠ When local altimeter setting not received, use Port Columbus altimeter setting and increase all MDA 40 feet. Increase S-9R Cat C/D and Circling Cat C visibility 1/8 mile.



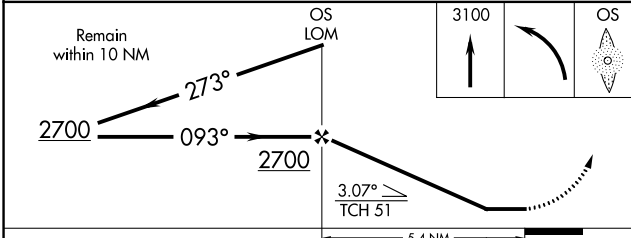
MISSED APPROACH: Climb to 3100 then left turn direct OS LOM and hold.

ATIS 121.35	COLUMBUS APP CON 125.95 317.775	STATE TOWER* 118.8 (CTAF) 254.325	GND CON 121.7	CLNC DEL 121.7	UNICOM 122.95
-----------------------	---	---	-------------------------	--------------------------	-------------------------



EC-2, 14 SEP 2017 to 12 OCT 2017

EC-2, 14 SEP 2017 to 12 OCT 2017



ELEV 905	D	TDZE 905
----------	----------	----------

Map view diagram showing the airport layout. RWY 9R is highlighted in black. Other runways shown include RWY 27L and RWY 27R. Various altitudes are marked: 978, 980, 974, 1043, 1063, 1103, 1325±, 1399, 1748, and 2028. The map also shows the FAF (Final Approach Fix) and the distance of 5.4 NM from the FAF to the LOM. The map includes the following text: REIL Rwy 27L, HIRL Rwy 9R-27L, MIRL Rwys 9L-27R and 5-23, FAF to MAP 5.4 NM.

Knots	60	90	120	150	180
Min:Sec	5:24	3:36	2:42	2:10	1:48

CATEGORY	A	B	C	D
S-9R	1460-3/4 555 (600-3/4)		1460-1 1/8 555 (600-1 1/8)	
CIRCLING	1460-1 555 (600-1)		1460-1 5/8 555 (600-1 5/8)	1460-2 555 (600-2)