

ORLANDO APP CON

134.05 339.8

ORLANDO INTL D-ATIS ARR

121.25

EXECUTIVE ATIS

127.25

KISSIMMEE GATEWAY AWOS-3

128.775

ALMA  
115.1 AMG  
Chan 98  
N31°32.19' - W82°30.49'  
L-24, H-9-12

VALDOSTA  
114.8 OTK  
Chan 95  
N30°46.83' - W83°16.78'  
L-21-22, H-9-12

SAVANNAH  
115.95 SAV  
Chan 106 (Y)  
N32°08.78' - W81°11.95'  
L-24, H-9-12

OCALA  
113.7 OCF  
Chan 84  
N29°10.65' - W82°13.58'  
L-21-24

LAKELAND  
116.0 LAL  
Chan 107

ORLANDO  
112.2 ORL  
Chan 59  
N28°32.56' - W81°20.10'

ORLANDO INTL

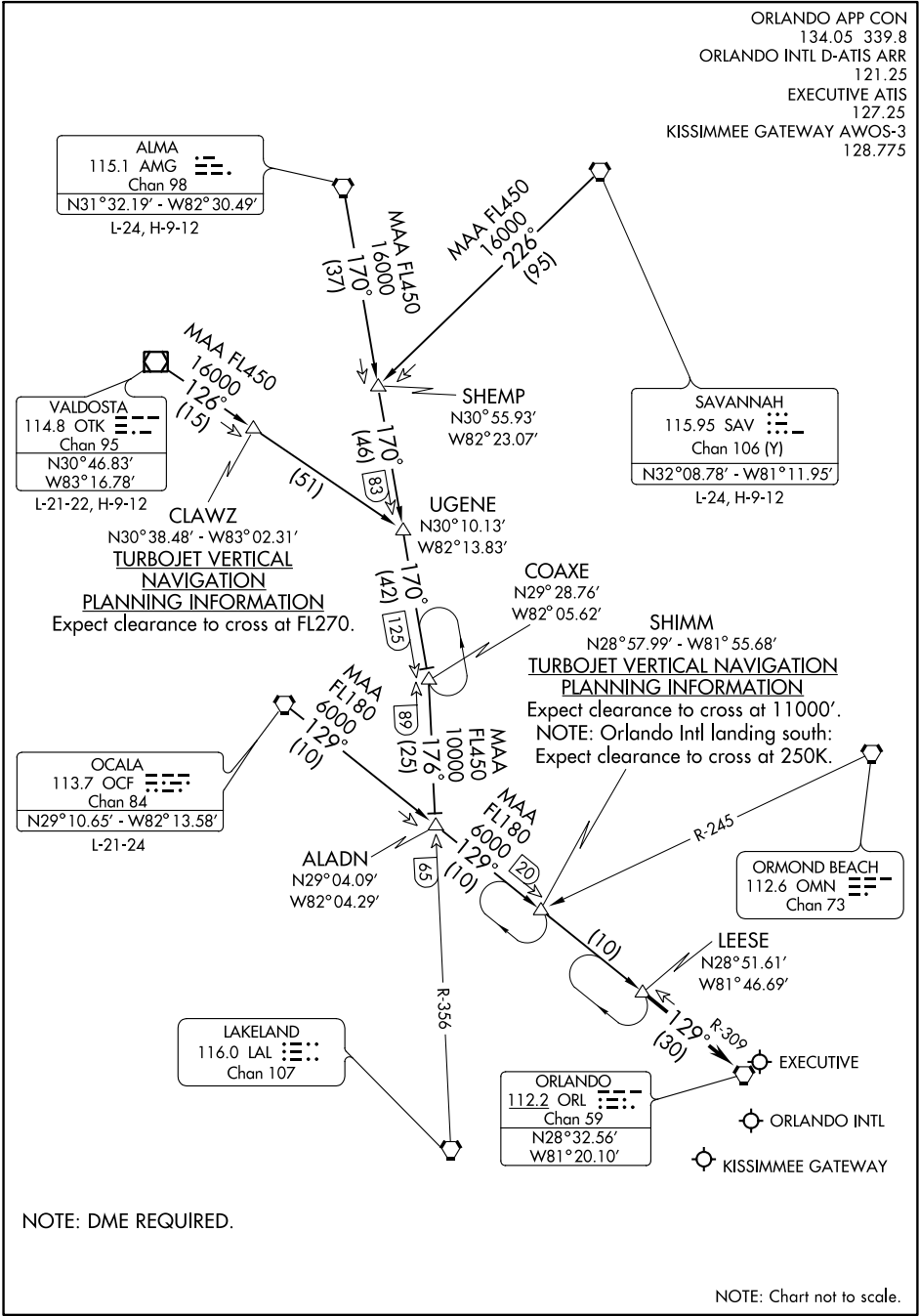
KISSIMMEE GATEWAY

NOTE: DME REQUIRED.

NOTE: Chart not to scale.

SE-3, 22 JUN 2017 to 20 JUL 2017

SE-3, 22 JUN 2017 to 20 JUL 2017



## ARRIVAL DESCRIPTION

ALMA TRANSITION (AMG.LEESE2): From over AMG VORTAC via AMG R-170 to COAXE INT, then via LAL R-356 to ALADN INT, then via OCF R-129 and ORL R-309 to LEESE DME. Thence....

OCALA TRANSITION (OCF.LEESE2): From over OCF VORTAC via OCF R-129 and ORL R-309 to LEESE DME. Thence....

SAVANNAH TRANSITION (SAV.LEESE2): From over SAV VORTAC via SAV R-226 to SHEMP INT, then via AMG R-170 to COAXE INT, then via LAL R-356 to ALADN INT, then via OCF R-129 and ORL R-309 to LEESE DME. Thence....

VALDOSTA TRANSITION (OTK.LEESE2): From over OTK VOR/DME via OTK R-126 to UGENE INT, then via AMG R-170 to COAXE INT, then via LAL R-356 to ALADN INT, then via OCF R-129 and ORL R-309 to LEESE DME. Thence....

....From over LEESE DME via ORL R-309 to ORL VORTAC. Expect vectors to final approach course after LEESE DME.