

(COSTR.COSTR3) 17117

COSTR THREE ARRIVAL (RNAV)

AL-571 (FAA)

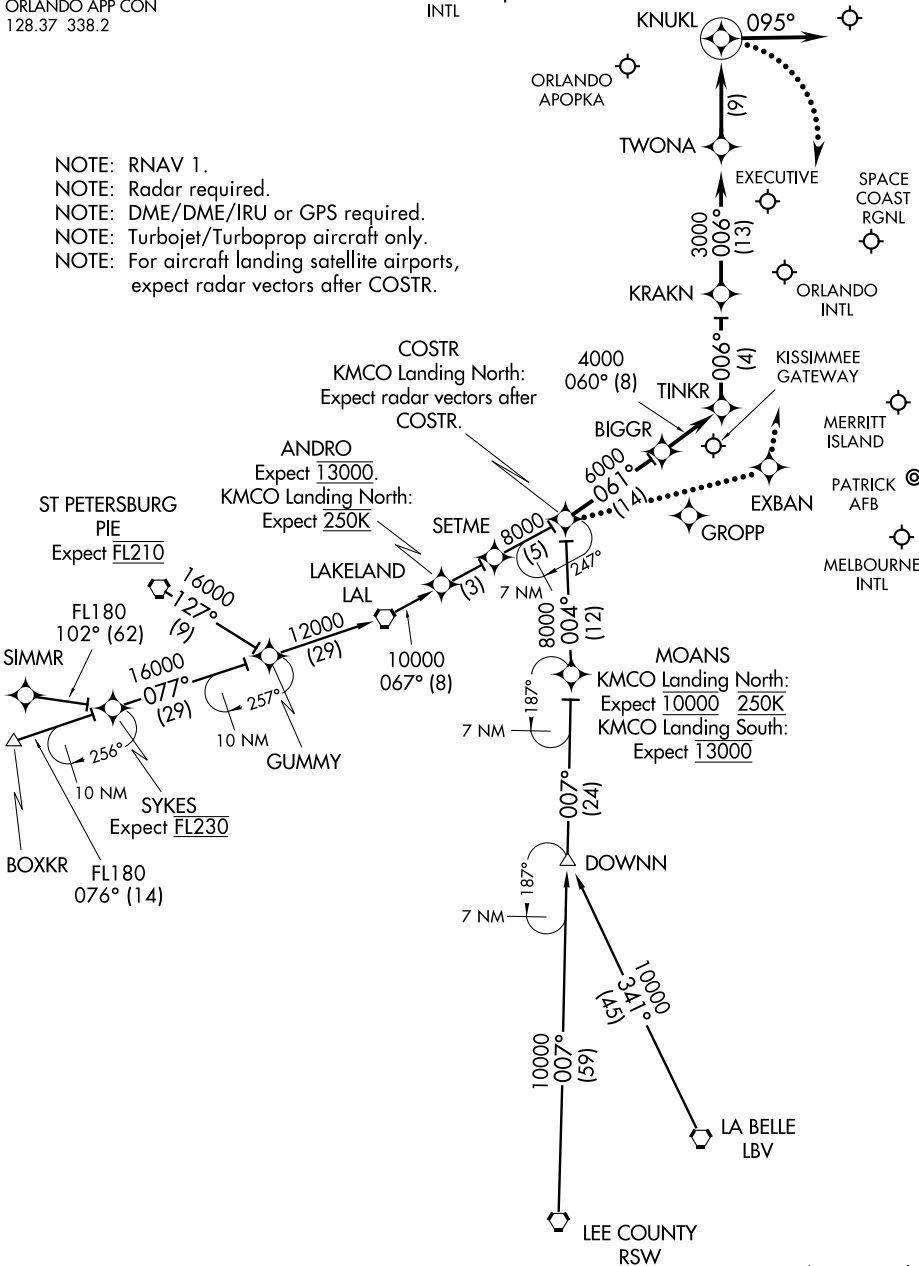
ORLANDO, FLORIDA

ORLANDO INTL D-ATIS
121.25
ORLANDO APP CON
128.37 338.2

LEESBURG INTL

ORLANDO SANFORD INTL

- NOTE: RNAV 1.
- NOTE: Radar required.
- NOTE: DME/DME/IRU or GPS required.
- NOTE: Turbojet/Turboprop aircraft only.
- NOTE: For aircraft landing satellite airports, expect radar vectors after COSTR.



SE-3, 27 APR 2017 to 25 MAY 2017

SE-3, 27 APR 2017 to 25 MAY 2017

NOTE: Chart not to scale.

COSTR THREE ARRIVAL (RNAV)

(COSTR.COSTR3) 29MAY14

ORLANDO, FLORIDA

ARRIVAL ROUTE DESCRIPTION

BOXKR TRANSITION (BOXKR.COSTR3):

LA BELLE TRANSITION (LBV.COSTR3):

LEE COUNTY TRANSITION (RSW.COSTR3):

SIMMR TRANSITION (SIMMR.COSTR3):

ST. PETERSBURG TRANSITION (PIE.COSTR3):

From over COSTR on track 061° to BIGGR, then as depicted to KNUKL, then on track 095°. Expect radar vectors.

LOST COMMUNICATIONS:

KMCO LANDING NORTH: Continue track to COSTR, then proceed direct to EXBAN, turn left to intercept the Rwy 36L final approach course, conduct approach.

KMCO LANDING SOUTH: Continue track to KNUKL, turn right to intercept the Rwy 18R final approach course, conduct approach.

SE-3, 27 APR 2017 to 25 MAY 2017

SE-3, 27 APR 2017 to 25 MAY 2017