

ORLANDO, FLORIDA

AL-305 (FAA)

17229

WAAS CH <b>58125</b> <b>W25A</b>	APP CRS <b>253°</b>	Rwy Idg TDZE Apt Elev	<b>6004</b> <b>113</b> <b>113</b>
--	------------------------	-----------------------------	---

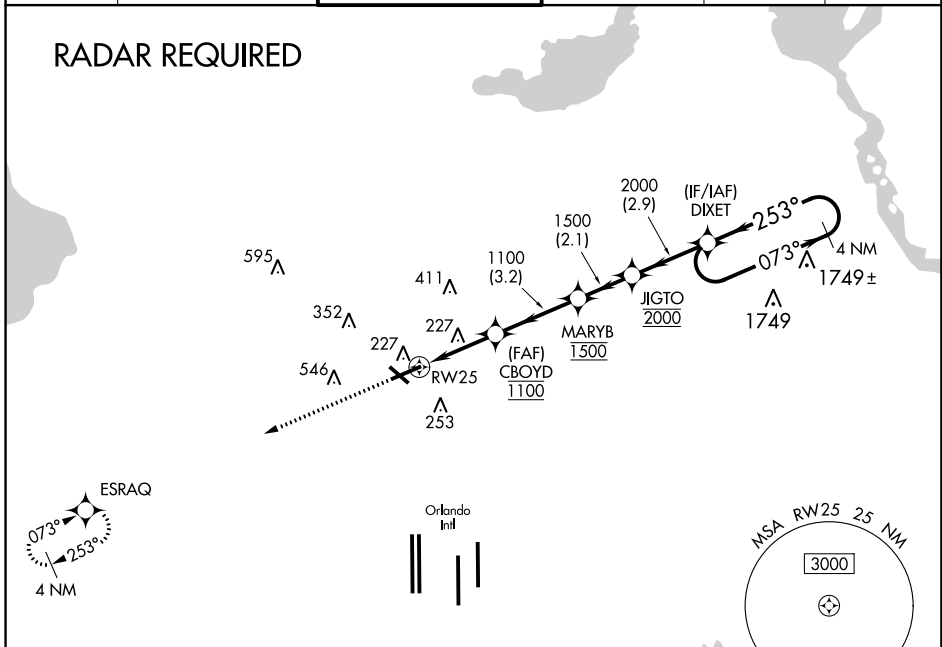
# RNAV (GPS) RWY 25

EXECUTIVE (ORL)

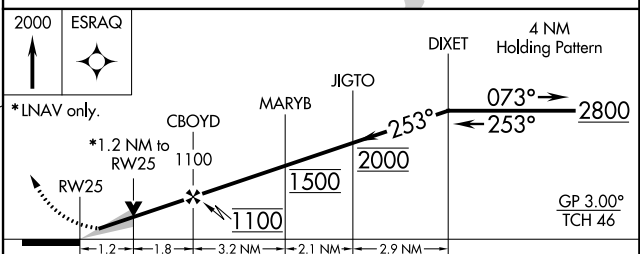
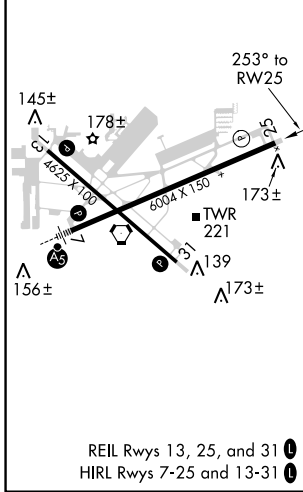
▼ For uncompensated Baro-VNAV systems, LNAV/VNAV NA below 2°C (36°F) or above 54°C (130°F). Circling Rwy 31 NA at night. DME/DME RNP-0.3 NA. In minimum visibility conditions, bright lights on highway ½ mile south of airport may be mistaken for runway lights.

MISSED APPROACH: Climb to 2000 direct ESRAQ and hold.

ATIS <b>127.25</b>	ORLANDO APP CON <b>124.8 351.9</b>	EXECUTIVE TOWER * <b>118.7(CTAF) 0 239.0</b>	GND CON <b>121.4 239.0</b>	CLNC DEL <b>128.45</b>	UNICOM <b>122.95</b>
-----------------------	---------------------------------------	---	-------------------------------	---------------------------	-------------------------



ELEV 113	<b>D</b>	TDZE 113
----------	----------	----------



CATEGORY	A	B	C	D
LPV DA		313-3/4	200 (200-3/4)	
LNAV/VNAV DA		371-7/8	258 (300-7/8)	
LNAV MDA	540-1	427 (500-1)	540-1/4	427 (500-1/4)
<b>CIRCLING</b>	580-1 467 (500-1)	680-1 567 (600-1)	860-2/4 747 (800-2/4)	860-2/2 747 (800-2/2)

ORLANDO, FLORIDA  
Amdt 3 15SEP16

28°33'N-81°20'W

# EXECUTIVE (ORL)

# RNAV (GPS) RWY 25

SE-3, 09 NOV 2017 to 07 DEC 2017

SE-3, 09 NOV 2017 to 07 DEC 2017