

LOC/DME I-EXO 109.35 Chan 30 (Y)	APP CRS 253°	Rwy Idg THRE 110 Apt Elev 113	6004
--	------------------------	---	-------------

ILS or LOC RWY 25

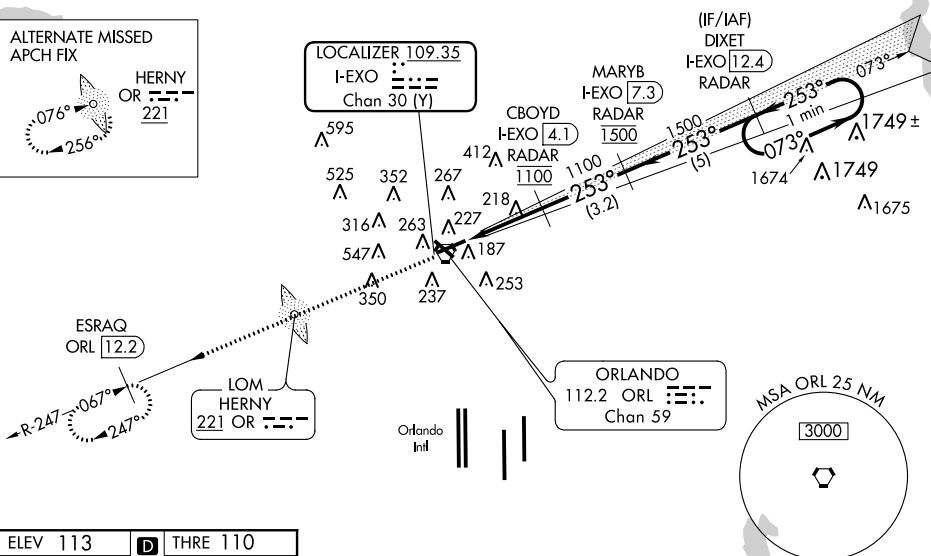
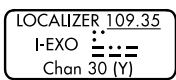
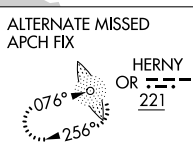
EXECUTIVE (ORL)

⚠ When VGSI inop, Circling Rwy 31 NA at night. DME Required. In minimum visibility conditions, bright lights on highway ½ mile south of airport may be mistaken for runway lights.

MISSED APPROACH: Climb to 2000 on ORL VORTAC R-247 to ESRAQ/ORL 12.2 DME and hold.

ATIS 127.25	ORLANDO APP CON 124.8 351.9	EXECUTIVE TOWER ★ 118.7 (CTAF) 0 239.0	GND CON 121.4 239.0	CLNC DEL 128.45	UNICOM 122.95
-----------------------	---------------------------------------	---	-------------------------------	---------------------------	-------------------------

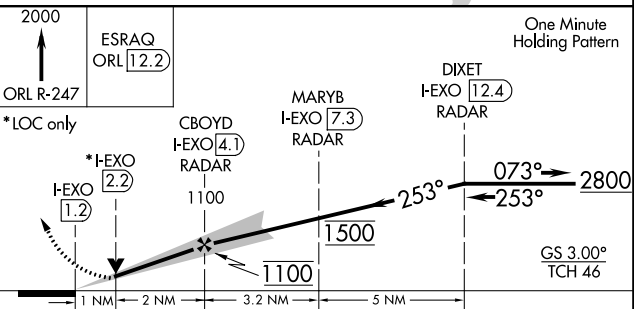
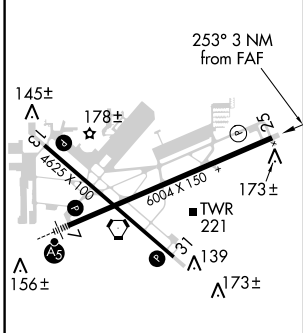
RADAR REQUIRED



SE-3, 08 JAN 2015 to 05 FEB 2015

SE-3, 08 JAN 2015 to 05 FEB 2015

ELEV 113	D	THRE 110
----------	----------	----------



REIL Rws 13, 25 and 31	THRE 110
HIRL Rws 7-25 and 13-31	
FAF to MAP 3 NM	
Knots	60 90 120 150 180
Min:Sec	3:00 2:00 1:30 1:12 1:00
CATEGORY	A B C D
S-ILS 25	310-¾ 200 (200-¾)
S-LOC 25	480-1 370 (400-1)
CIRCLING	580-1 467 (500-1) 620-1½ 507 (600-1½) 860-2½ 747 (800-2½)

ORLANDO, FLORIDA
Orig 10JAN13

28°33'N-81°20'W

EXECUTIVE (ORL)

ILS or LOC RWY 25