

WAAS CH 69504 W32A	APP CRS 323°	Rwy Idg TDZE 653 Apt Elev 672	10005
--	------------------------	---	--------------

RNAV (GPS) RWY 32R

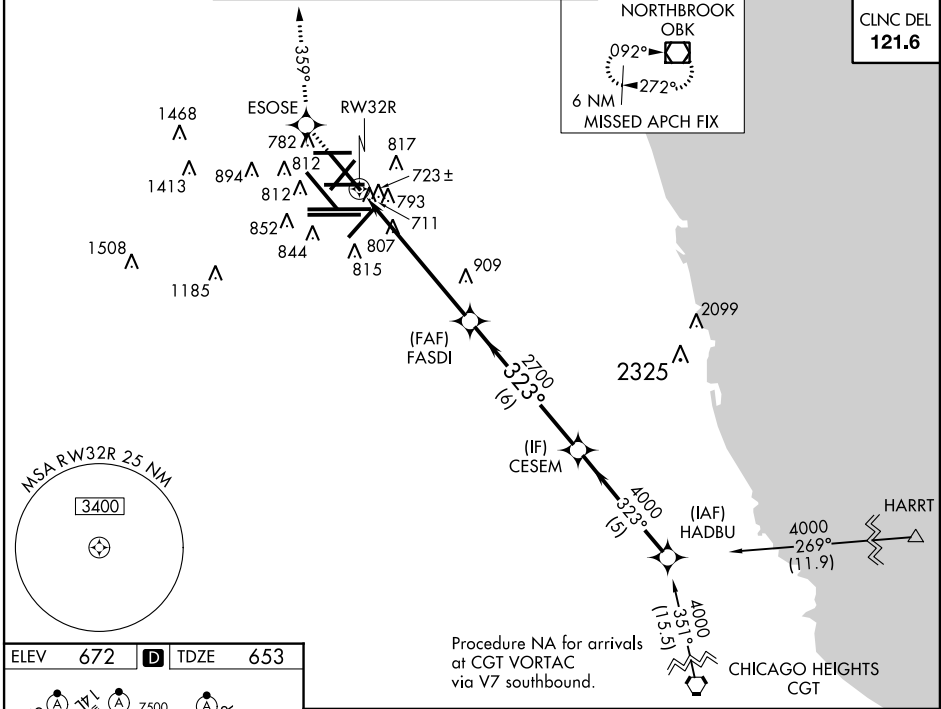
CHICAGO-O'HARE INTL (ORD)

▼ For inoperative MALS, increase LPV all Cats visibility to RVR 5000. For uncompensated Baro-VNAV systems, LNAV/VNAV NA below -16°C (4°F) or above 48°C (118°F). DME/DME RNP-0.3 NA.



MISSED APPROACH: Climb to 4000 direct ESOSE and right turn via 359° track to OBK VOR/DME and hold.

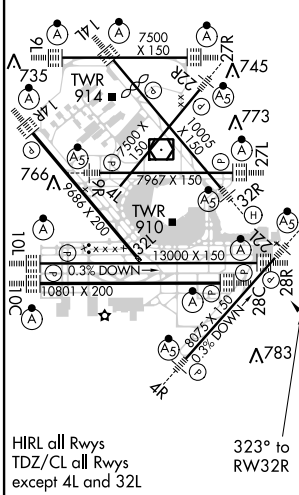
ATIS 135.4 282.225	CHICAGO APP CON 119.0 393.1	O'HARE TOWERS (Rwy 9L/27R) (NORTH) 128.15 348.0 (CENTER) 120.75 121.15 126.9 132.7 348.0				GND CON (TWR NORTH) 124.125 (ALL TWRs) 226.675	(TWR CENTER) (OBND) 121.75 (IBND) 121.9 134.15
--	---------------------------------------	---	--	--	--	--	---



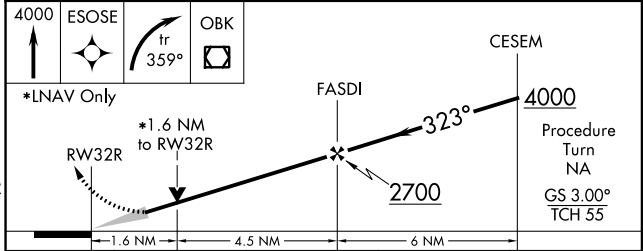
EC-3, 08 JAN 2015 to 05 FEB 2015

EC-3, 08 JAN 2015 to 05 FEB 2015

ELEV 672	D	TDZE 653
-----------------	----------	-----------------



HIRL all Rwy's
TDZ/CL all Rwy's
except 4L and 32L



CATEGORY	A	B	C	D
LPV DA	928/24 275 (300-½)			
LNAV/VNAV DA	1073/50 420 (500-1)			
LNAV MDA	1220/24 567 (600-½)	1220/50 567 (600-1)	1220/60 567 (600-1¼)	1220/60 567 (600-1¼)
CIRCLING	1220-1 548 (600-1)	1220-1½ 548 (600-1½)	1240-2 568 (600-2)	1240-2 568 (600-2)