

WAAS CH <b>69508</b> <b>W27B</b>	APP CRS <b>273°</b>	Rwy Idg TDZE Apt Elev	<b>7500</b> <b>664</b> <b>680</b>
--	------------------------	-----------------------------	---

# RNAV (GPS) RWY 27R

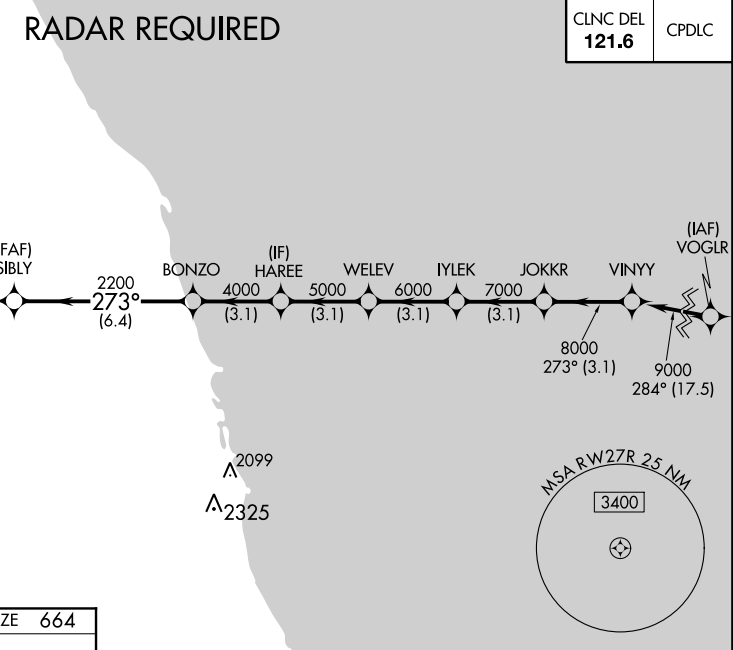
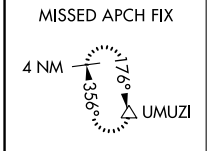
CHICAGO O'HARE INTL (ORD)

**▼** For uncompensated Baro-VNAV systems, LNAV/VNAV NA below -19°C (-2°F) or above 54°C (130°F). Simultaneous approach authorized. DME/DME RNP-0.3 NA. LNAV procedure NA during simultaneous operations. Use of FD or AP providing RNAV track guidance required during simultaneous operations.

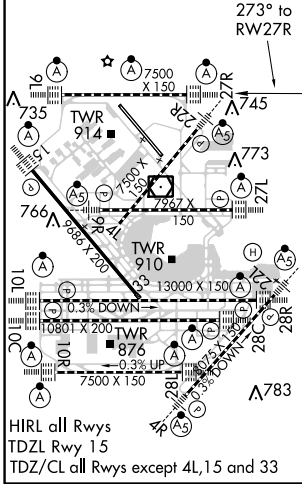
ALSF-2  
**A**

MISSED APPROACH: Climb to 1100 then climbing right turn to 4000 direct UMUZI and hold.

ATIS <b>135.4</b> <b>282.225</b>	CHICAGO APP CON <b>119.0 393.1</b>	O'HARE TOWERS <b>128.15 348.0</b> (Rwy 9L/27R) <b>133.0 348.0</b> (10R/28L) <b>120.75 121.15 126.9 132.7 348.0</b> (CENTER)	GND CON (TWR CENTER) <b>124.125</b> (TWR NORTH) <b>118.05</b> (TWR SOUTH) <b>126.675</b> (ALL TWRs)	(TWR CENTER) <b>121.75</b> (OBND) (TWR SOUTH) <b>121.9</b> (IBND) <b>134.15</b>
--	---------------------------------------	--	---	---



ELEV 680	<b>D</b>	TDZE 664
----------	----------	----------



1100	4000	UMUZI				
* LNAV only.						
* 1.3 NM to RWY 27R						
1.3	3.4	6.4 NM	3.1 NM	3.1 NM	3.1 NM	3.1 NM
CATEGORY	A	B	C	D		
LPV DA	864/24		200 (200-1/2)			
LNAV/VNAV DA	961/24		297 (300-1/2)			
LNAV MDA	1120/24		456 (500-1/2)		1120/45 456 (500-3/4)	

EC-3, 27 APR 2017 to 25 MAY 2017

EC-3, 27 APR 2017 to 25 MAY 2017