

WAAS CH 90504 W22A	APP CRS 223°	Rwy Idg 7500 TDZE 652 Apt Elev 672
--	------------------------	---

RNAV (GPS) RWY 22R

CHICAGO-O'HARE INTL (ORD)

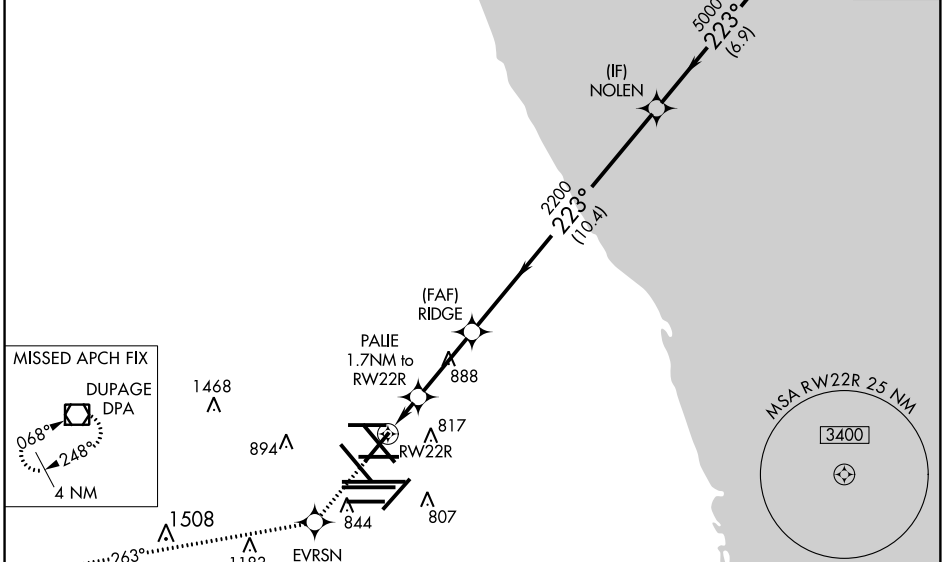
▼ For uncompensated Baro-VNAV systems, LNAV/VNAV NA below -22°C (-7°F) or above 39°C (102°F). Simultaneous approach authorized with Rwy 22L. DME/DME RNP-0.3 NA. LNAV procedure NA during simultaneous operations. Use of FD or AP providing RNAV track guidance required during simultaneous operations.



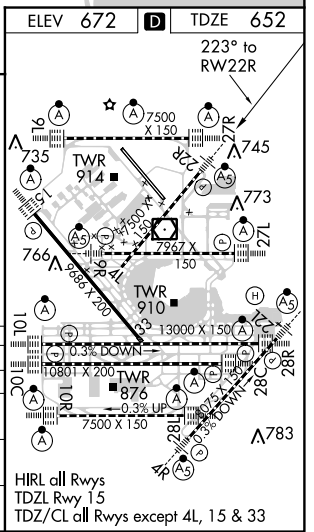
MISSED APPROACH: Climb to 4000 direct EVRSN and on track 263° to DPA VOR/DME and hold.

CHICAGO APP CON 119.0 393.1	O'HARE TOWERS 128.15 348.0 (Rwy 9L/27R) 133.0 348.0 (10R/28L) 120.75 121.15 126.9 132.7 348.0 (CENTER)	GND CON (TWR CENTER) 121.75 (OBND) 121.9 (IBND) 134.15	CLNC DEL 121.6
---------------------------------------	--	---	--------------------------

D-ATIS 135.4 282.225	RADAR REQUIRED	(IAF) FNUCH	CPDLC
--	-----------------------	-------------	-------



4000 EVRSN	tr 263°	DPA	VGSi and RNAV glidepath not coincident (VGSi Angle 3.00/TCH 69).			
* LNAV only.			FNUCH			
	PALIE 1.7 NM to RWY 22R	RIDGE	NOLEN	7000		
	* 1 NM to RWY 22R	2200		5000		
	1 NM	0.7	3 NM	10.4 NM	6.9 NM	GP 3.00° TCH 49
CATEGORY	A	B	C	D		
LPV DA		852/18	200 (200-½)			
LNAV/VNAV DA		972/32	320 (300-¾)			
LNAV MDA	1040/24	388 (400-½)	1040/35	388 (400-¾)		
CIRCLING	1220-1	548 (600-1)	1220-1½	1240-2	568 (600-2)	



EC-3, 14 SEP 2017 to 12 OCT 2017

EC-3, 14 SEP 2017 to 12 OCT 2017