

WAAS CH 78204 W09A	APP CRS 093°	Rwy Idg 7709 TDZE 660 Apt Elev 680
--	------------------------	---

RNAV (GPS) RWY 9R

CHICAGO O'HARE INTL (ORD)

▽ For uncompensated Baro-VNAV systems, LNAV/VNAV NA below -19°C (-2°F) or above 54°C (130°F). Simultaneous approach authorized. DME/DME RNP-0.3 NA. LNAV procedure NA during simultaneous operations. Use of FD or AP providing RNAV track guidance required during simultaneous operations. For inop MALS, increase LNAV Cat C/D visibility to 1 $\frac{1}{8}$ mile.

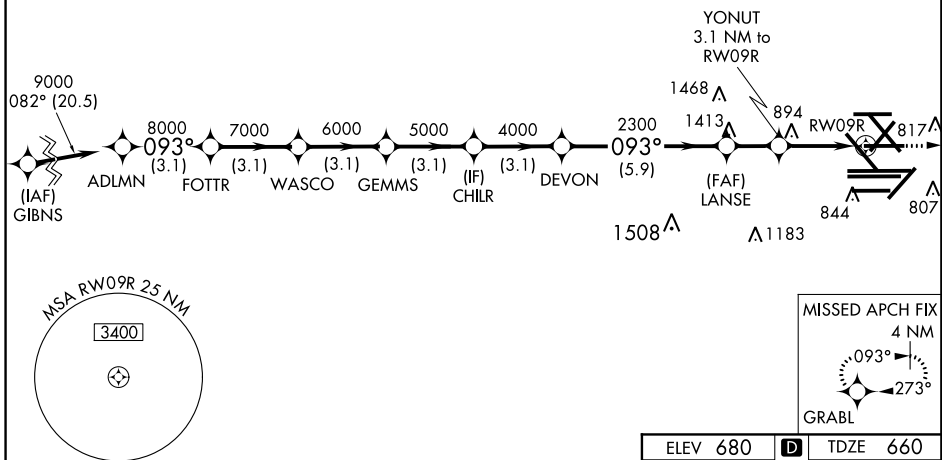


MISSED APPROACH:
Climb to 4000 direct GRABL and hold.

D-ATIS 135.4 282.225	CHICAGO APP CON 119.0 393.1	O'HARE TOWERS 128.15 348.0 (Rwy 9L/27R) 133.0 348.0 (10R/28L) 120.75 121.15 126.9 132.7 348.0 (CENTER)				GND CON (TWR NORTH) 124.125 (TWR SOUTH) 118.05 (ALL TWRs) 226.675	(TWR CENTER) 121.75 (OBND) 121.9 (IBND) 134.15
--	---------------------------------------	--	--	--	--	---	--

RADAR REQUIRED

CLNC DEL 121.6	CPDLC
--------------------------	-------



EC-3, 12 OCT 2017 to 09 NOV 2017

EC-3, 12 OCT 2017 to 09 NOV 2017

VGSI and RNAV glidepath not coincident (VGSI Angle 3.00/TCH 74).

	ADLMN	FOTTR	WASCO	GEMMS	CHILR	DEVON	LANS E	YONUT	RWY 9R
Altitude	9000	8000	7000	6000	5000	4000	2300	1700	4000
Distance	3.1 NM	3.1 NM	3.1 NM	3.1 NM	3.1 NM	5.9 NM	1.9 NM	1.8	1.3
Category	A		B			C		D	
LPV DA			860/18			200 (200- $\frac{1}{2}$)			
LNAV/VNAV DA			1047/40			387 (400- $\frac{3}{4}$)			
LNAV MDA	1160/24		500 (500- $\frac{1}{2}$)			1160/50		500 (500-1)	

GP 3.00° TCH 57

* NNAV only.

