

LOC/DME I-HAC 110.5 Chan 42	APP CRS 273°	Rwy ldg 7782 TDZE 654 Apt Elev 680
---	------------------------	---

ILS or LOC RWY 27L

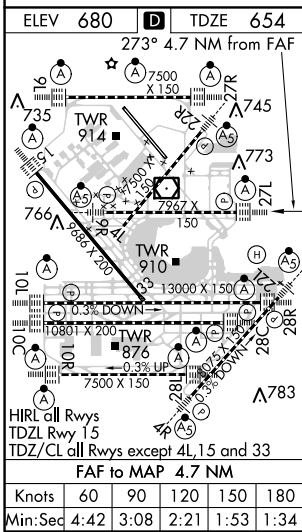
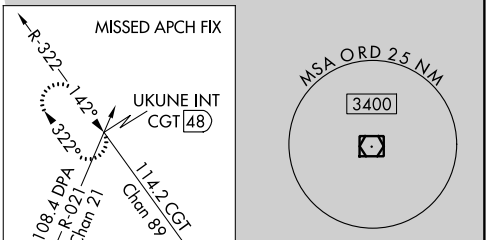
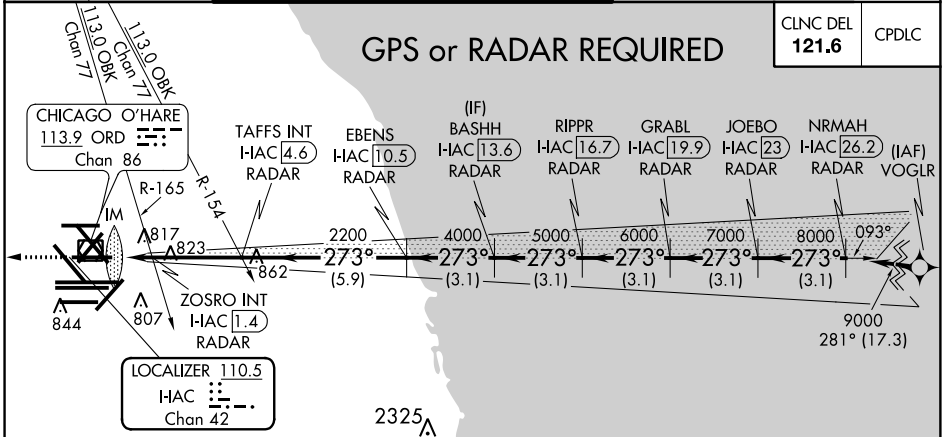
CHICAGO O'HARE INTL (ORD)

Simultaneous approach authorized. DME or RADAR required.
For inop ALS, increase S-LOC 27L Cat C/D visibility to 1 1/2 SM.

ALS-F-2

MISSED APPROACH: Climb to 1200 then climbing right turn to 4000 on heading 295° and on CGT VORTAC R-322 to UKUNE INT/CGT 48 DME and hold.

D-ATIS 135.4 282.225	CHICAGO APP CON 119.0 393.1	O'HARE TOWERS 128.15 348.0 (Rwy 9L/27R) 133.0 348.0 (10R/28L) 120.75 121.15 126.9 132.7 348.0 (CENTER)	GND CON (TWR CENTER) 121.75 (OBND) (TWR SOUTH) 121.9 (IBND) 226.675 (ALL TWSR) 134.15
--	---------------------------------------	--	---



1200	4000	CGT R-322	UKUNE INT	VGSI and descent angles not coincident (VGSI Angle 3.00/TCH 67).				
*LOC only		TAFFS INT I-HAC 4.6 RADAR	EBENS I-HAC 10.5 RADAR	BASHH I-HAC 13.6 RADAR	RIPPR I-HAC 16.7 RADAR	GRABL I-HAC 19.9 RADAR	JOEBO I-HAC 23 RADAR	NRMAH I-HAC 26.2 RADAR
I-HAC 0.1	ZOSRO INT I-HAC 1.4	2200	4000	5000	6000	7000	8000	9000
0.1	1.4	3.2 NM	-5.9 NM	3.1 NM	3.1 NM	3.1 NM	3.1 NM	3.1 NM
CATEGORY		A	B	C	D			
S-ILS 27L		854/18 200 (200-1/2)						
S-LOC 27L		1160/24	506 (500-1/2)	1160/55		506 (500-1 1/4)		
ZOSRO FIX MINIMUMS (DUAL VOR RECEIVERS OR DME REQUIRED)								
S-LOC 27L		1080/24	426 (400-1/2)	1080/40 426 (400-3/4)				

EC-3, 12 OCT 2017 to 09 NOV 2017

EC-3, 12 OCT 2017 to 09 NOV 2017