

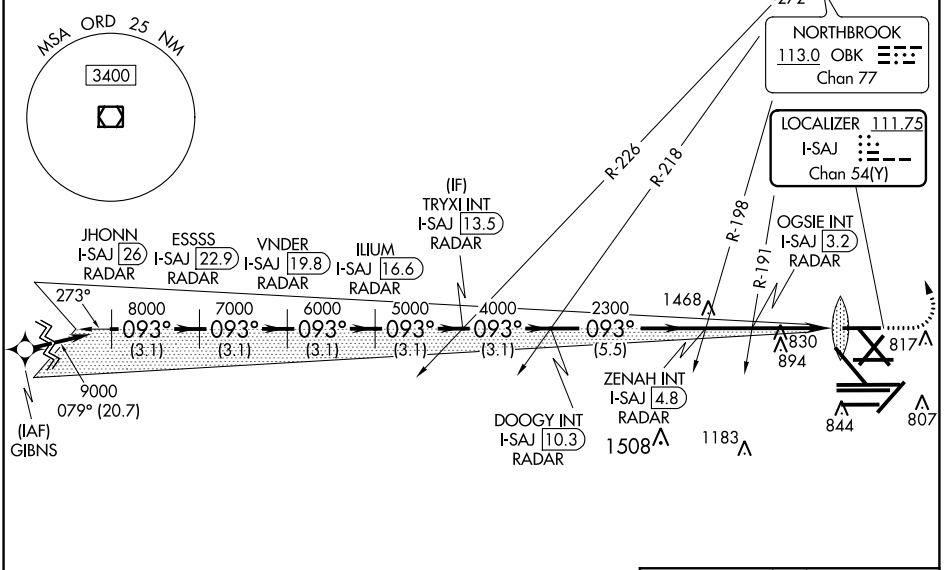
LOC/DME I-SAJ 111.75 Chan 54 (Y)	APP CRS 093°	Rwy Idg 7500	TDZE 668
		Apt Elev 680	

ILS or LOC RWY 9L

CHICAGO O'HARE INTL (ORD)

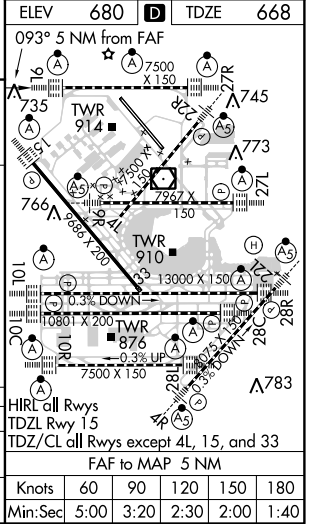
Simultaneous approach authorized. DME or RADAR Required.	ALSF-2 	MISSED APPROACH: Climb to 1100 then climbing left turn to 4000 direct OBK VOR/DME and hold, continue climb-in-hold to 4000.	
		CHICAGO APP CON 119.0 393.1	O'HARE TOWERS 128.15 348.0 (Rwy 9L/27R) 133.0 348.0 (10R/28L) 124.125 (TWR NORTH) 121.75 (OBND) 118.05 (TWR SOUTH) 121.9 (BND) 226.675 (ALL TWRS)

D-ATIS 135.4 282.225	CPDLC
--	-------



RNAV 1-GPS or RADAR REQUIRED

	JHONN I-SAJ 26 RADAR	ESSSS I-SAJ 22.9 RADAR	VNDER I-SAJ 19.8 RADAR	ILIUM I-SAJ 16.6 RADAR	DOOGY INT I-SAJ 10.3 RADAR	TRYXI INT I-SAJ 13.5 RADAR	ZENAH INT I-SAJ 4.8 RADAR	OGSIE INT I-SAJ 3.2 RADAR	OBK
	9000	8000	7000	6000	5000	4000	2300	1760	1100
	3.1 NM	3.1 NM	3.1 NM	3.1 NM	3.1 NM	5.5 NM	1.7 NM	2.2	1
CATEGORY	A		B			C		D	
S-ILS 9L			868/18			200 (200-½)			
S-LOC 9L	1080/24		412 (500-½)			1080/40		412 (500-¾)	



EC-3, 17 AUG 2017 to 14 SEP 2017

EC-3, 17 AUG 2017 to 14 SEP 2017