

ILS RWY 9L

MIAMI/OPA LOCKA EXECUTIVE (OPF)

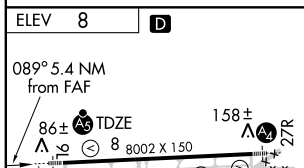
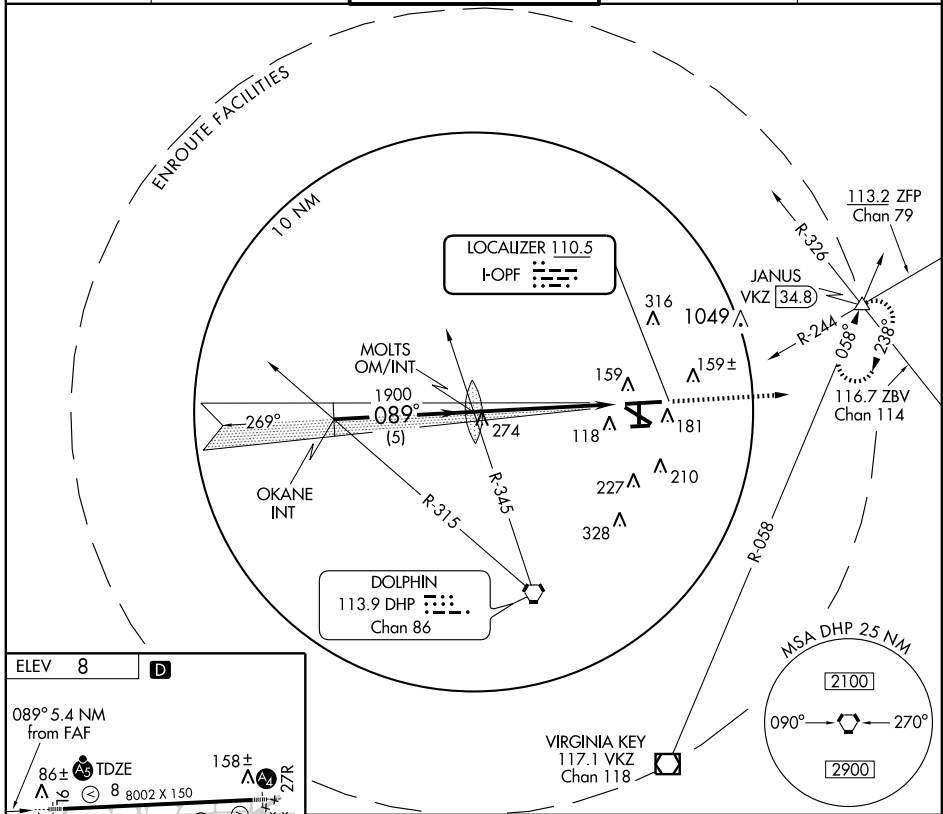
LOC I-OPF 110.5	APP CRS 089°	Rwy Idg 8002
		TDZE 8
		Apt Elev 8

⚠ If local altimeter setting not received, use Miami Intl altimeter setting and increase DH to 224 feet and all MDAs 20 feet.
⚠ CAUTION: Lights on highway 0.7 NM north of airport may be mistaken for runway. RADAR REQUIRED

MALSR

MISSED APPROACH: Climb to 2000 via heading 090° and VKZ R-058 to JANUS Int/VKZ 34.8 DME and hold.

ATIS 125.9	MIAMI APP CON 128.6 255.6	OPA LOCKA TOWER * 120.7(CTAF) 0 360.8	GND CON 121.9 336.4	CLNC DEL 119.2
----------------------	-------------------------------------	--	-------------------------------	--------------------------



ELEV	8	D			
MIRL Rwy 9R-27L					
HIRL Rwy 9L-27R and 12-30					
FAF to MAP 5.4 NM					
Knots	60	90	120	150	180
Min:Sec	5:24	3:36	2:42	2:10	1:48

Procedure Turn NA	OKANE INT	MOLTS OM/INT	2000	JANUS
		1811	↑ HDG 090° VKZ R-058 117.1	△
GS 3.00° TCH 51	1900	089°	1900	
	5 NM	5.4 NM		
CATEGORY	A	B	C	D
S-ILS 9L	208-1/2 200 (200-1/2)			
S-LOC 9L	420-1/2	412 (500-1/2)	420-3/4	412 (500-3/4)
CIRCLING	540-1	532 (600-1)	540-1/2	580-2
			532 (600-1/2)	572 (600-2)

SE-3, 19 NOV 2009 to 17 DEC 2009

SE-3, 19 NOV 2009 to 17 DEC 2009