

WAAS CH 69528 W09A	APP CRS 089°	Rwy Idg 6006 TDZE 292 Apt Elev 302
--	------------------------	---

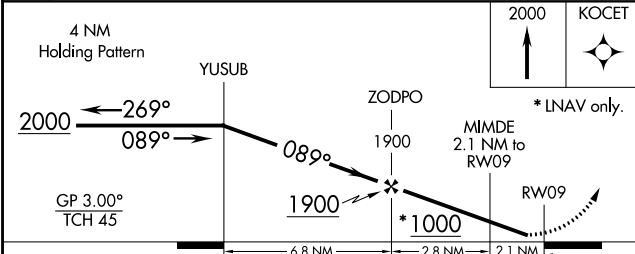
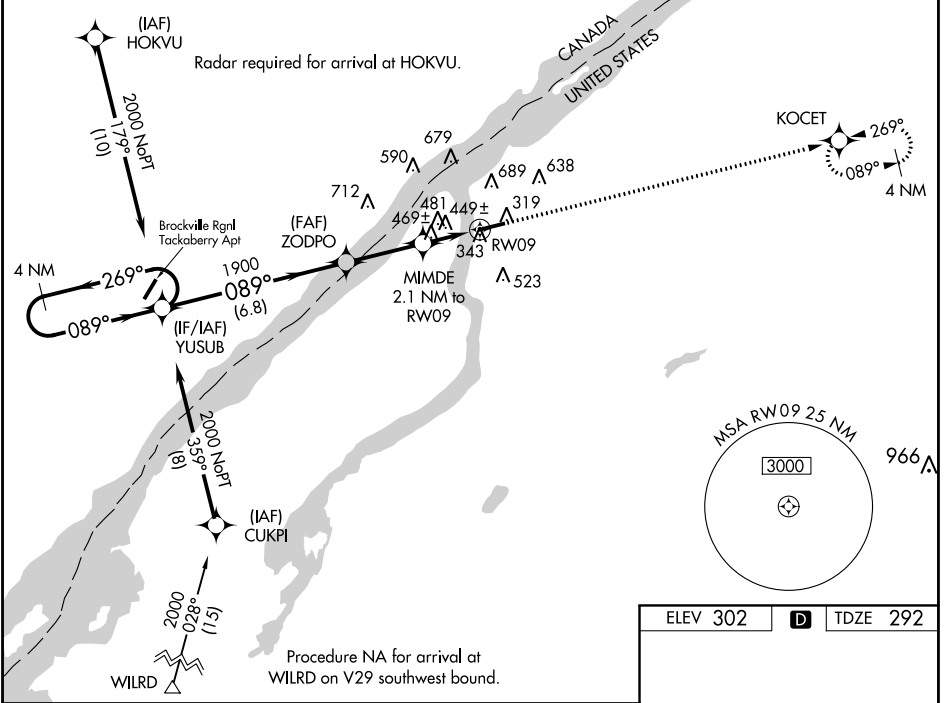
RNAV (GPS) RWY 9

OGDENSBURG INTL (OGS)

NA Baro-VNAV NA when using Massena altimeter setting. For uncompensated Baro-VNAV systems, LNAV/VNAV NA below -15°C (5°F) or above 42°C (107°F). DME/DME RNP-0.3 NA. Rwy 9 helicopter visibility reduction below 3/4 SM NA. When local altimeter setting not received, use Massena altimeter setting; increase LPV DA to 623 feet, LNAV/VNAV DA to 848 feet and all visibilities 3/8 SM; increase all MDAs 100 feet and LNAV/Circling Cat C/D visibility 1/2 SM.

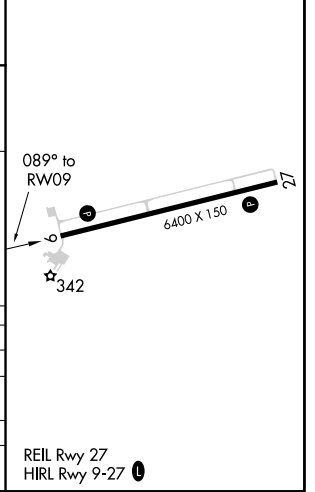
MISSED APPROACH:
Climb to 2000 direct KOCET and hold.

AWOS-3 118.525	BOSTON CENTER 135.25 377.1	UNICOM 122.8 (CTAF)
--------------------------	--------------------------------------	-------------------------------



ELEV 302	D	TDZE 292
----------	----------	----------

CATEGORY	A	B	C	D
LPV DA		542-1	250 (300-1)	
LNAV/DA VNAV		767-1 3/8	475 (500-1 3/8)	
LNAV MDA	740-1	448 (500-1)	740-1 3/8	448 (500-1 3/8)
C CIRCLING	760-1 458 (500-1)	1000-1 698 (700-1)	1000-2 698 (700-2)	1000-2 1/4 698 (700-2 1/4)



NE-2, 12 OCT 2017 to 09 NOV 2017

NE-2, 12 OCT 2017 to 09 NOV 2017