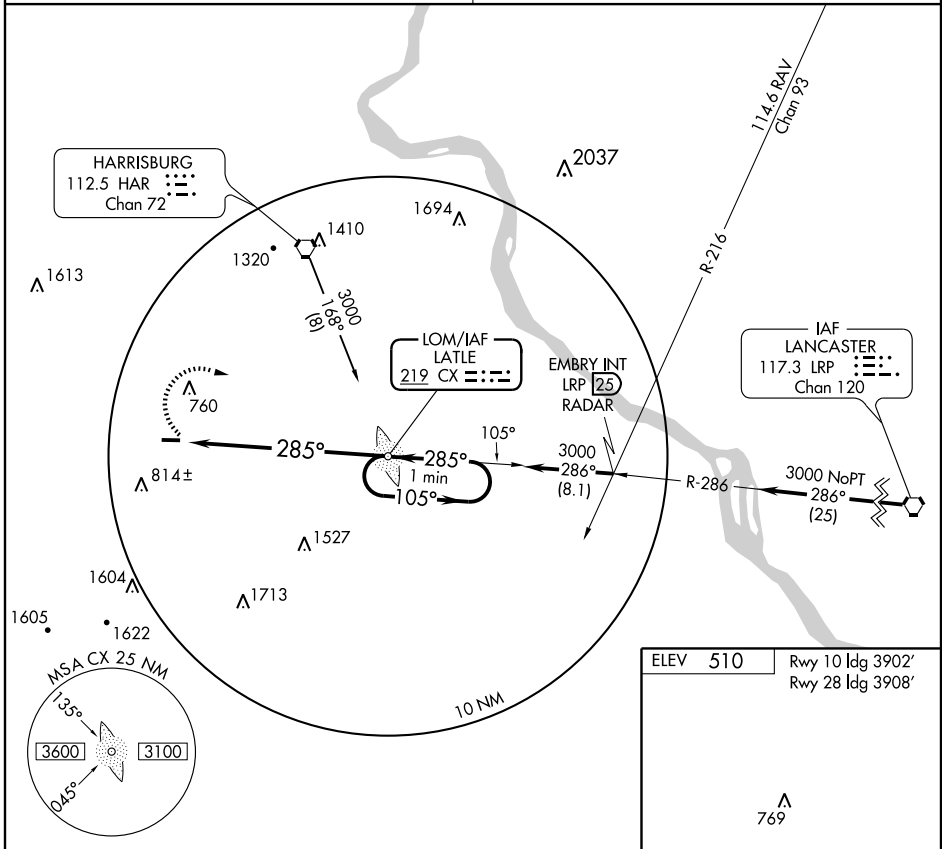


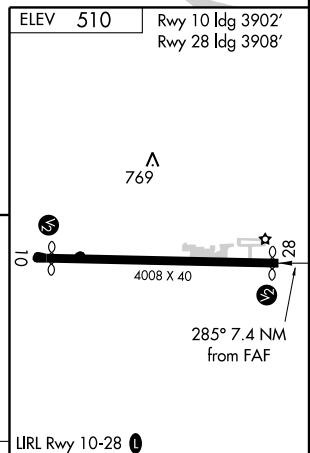
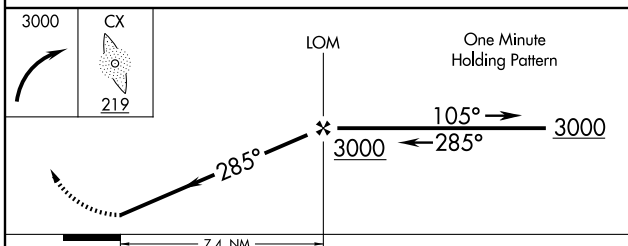
LOM CX 219	APP CRS 285°	Rwy ldg TDZE Apt Elev	N/A N/A 510
----------------------	------------------------	--------------------------	----------------------------------------

<p>▼ Use Harrisburg Intl altimeter setting.</p> <p>▲ NA</p>	<p>MISSED APPROACH: Climbing right turn to 3000 direct CX LOM and hold.</p>
<p>HARRISBURG APP CON 124.1 273.525</p>	<p>UNICOM 122.8 (CTAF)</p>



NE-4, 19 NOV 2009 to 17 DEC 2009

NE-4, 19 NOV 2009 to 17 DEC 2009

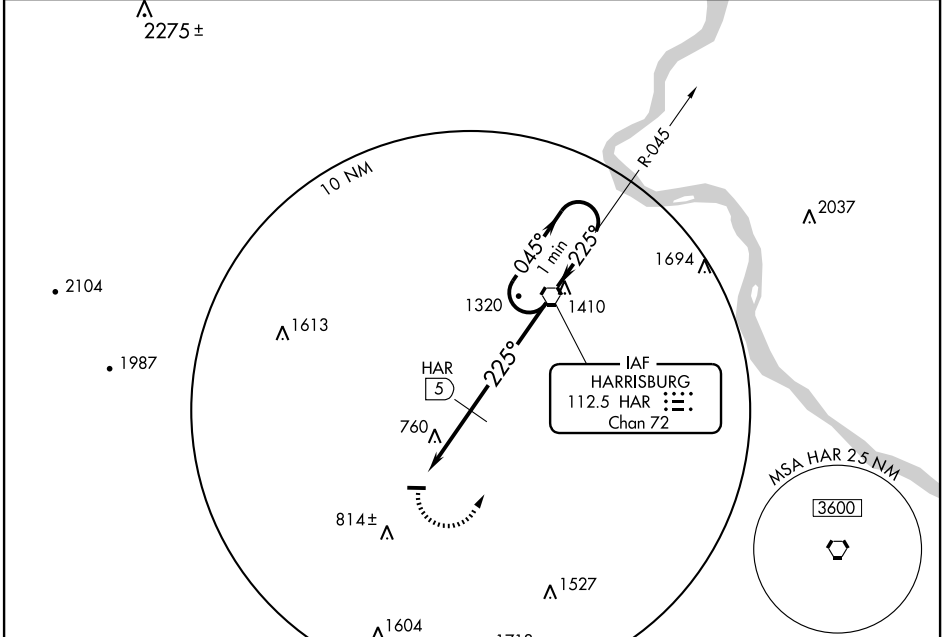


CATEGORY	A	B	C	D	FAF to MAP 7.4 NM					
CIRCLING	1260-1 750 (800-1)	1260-1¼ 750 (800-1¼)	1260-2¼ 750 (800-2¼)	NA	Knots	60	90	120	150	180
					Min:Sec	7:24	4:56	3:42	2:58	2:28

VORTAC HAR 112.5 Chan 72	APP CRS 225°	Rwy Idg TDZE Apt Elev 510	N/A N/A 510
----------------------------------------------	------------------------	-------------------------------------------	--------------------------

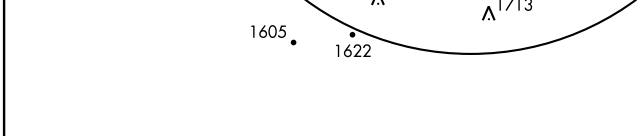
<p>▼ ▲ NA</p> <p>Use Harrisburg Intl altimeter setting.</p>	<p>MISSED APPROACH: Climbing left turn to 3000 direct HAR VORTAC and hold.</p>
-----------------------------------------------------------------	--------------------------------------------------------------------------------

<p>HARRISBURG APP CON 124.1 273.525</p>	<p>UNICOM 122.8 (CTAF)</p>
----------------------------------------------------	---------------------------------------

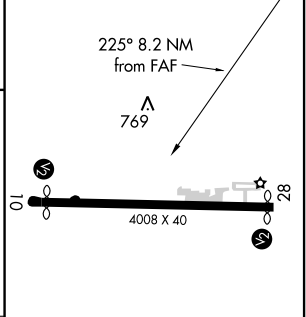


NE-4, 19 NOV 2009 to 17 DEC 2009

NE-4, 19 NOV 2009 to 17 DEC 2009



ELEV 510	Rwy 10 ldg 3902'
	Rwy 28 ldg 3908'



3000	HAR 112.5	VORTAC	One Minute Holding Pattern
HAR 8.2	HAR 5	3000	045° → 3000
		1860	← 225° 3000
		3.2	5 NM

CATEGORY	A	B	C	D
CIRCLING	1860-1¼ 1350 (1400-1¼)	1860-1½ 1350 (1400-1½)	1860-3 1350 (1400-3)	NA
DME MINIMUMS				
CIRCLING	1200-1 690 (700-1)	1200-2 690 (700-2)	NA	

IIRL Rwy 10-28	FAF to MAP 8.2 NM				
Knots	60	90	120	150	180
Min:Sec	8:12	5:28	4:06	3:17	2:44