

WAAS CH 77537 W25A	APP CRS 251°	Rwy Idg THRE 1022 Apt Elev 1027
----------------------------------------	------------------------	-----------------------------------------------------

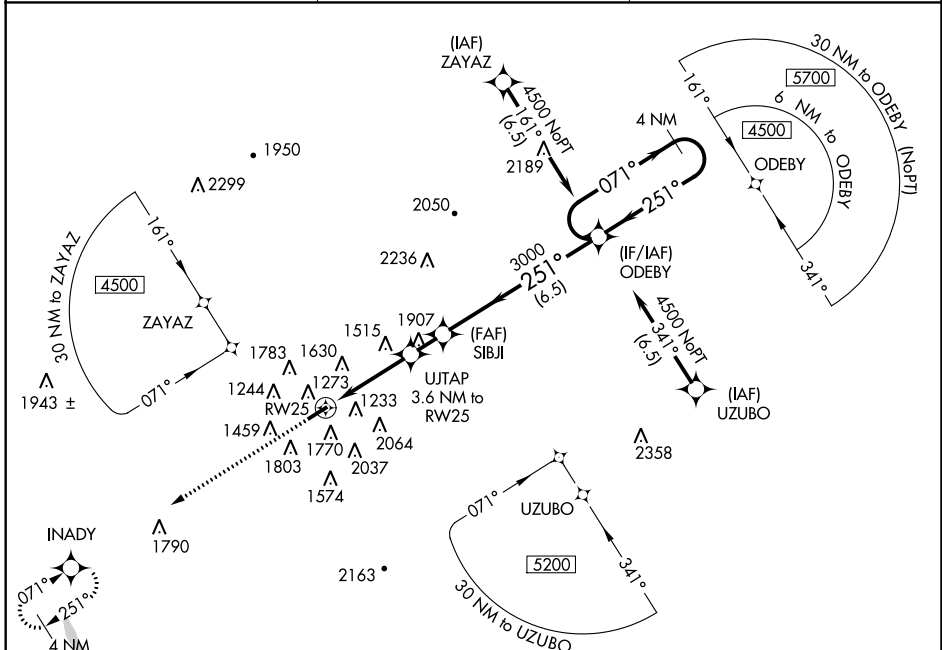
RNAV (GPS) RWY 25

SIDNEY MUNI (N23)

⚠ DME/DME RNP-0.3 NA. When local altimeter setting not received, use Binghamton altimeter setting and increase all MDA 160 feet. Helicopter visibility reduction below 1 SM NA. Circling to Rwy 7 NA at night.
⚠ NA
⚠ -20°C/-4°F

MISSED APPROACH: Climb to 3500 direct INADY and hold.

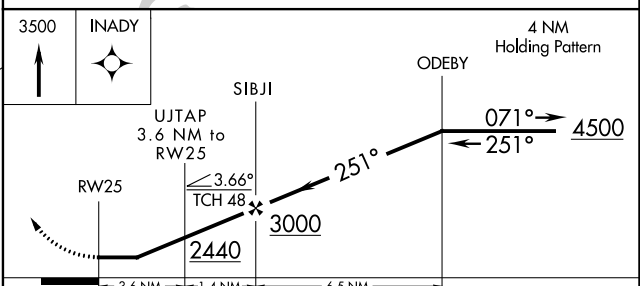
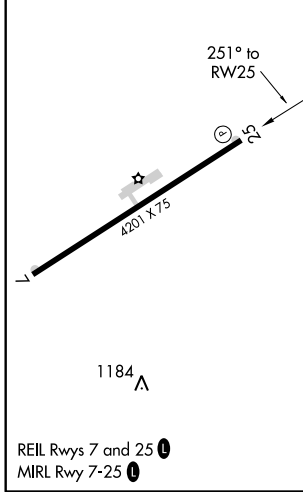
AWOS-3 118.275	BOSTON CENTER 133.25 279.5	UNICOM 122.8 (CTAF) 0
--------------------------	--------------------------------------	---------------------------------



NE-2, 27 APR 2017 to 25 MAY 2017

NE-2, 27 APR 2017 to 25 MAY 2017

ELEV 1027	THRE 1022
------------------	------------------



CATEGORY	A	B	C	D
LP MDA	2080-1¼ 1058 (1100-1¼)	2080-1½ 1058 (1100-1½)	2080-3 1058 (1100-3)	NA
LNAV MDA	2200-1¼ 1178 (1200-1¼)	2200-1½ 1178 (1200-1½)	2200-3 1178 (1200-3)	NA
C CIRCLING	2200-1¼ 1153 (1200-1¼)	2240-1½ 1213 (1300-1½)	2460-3 1433 (1500-3)	NA

APP CRS	Rwy ldg	4201
071°	THRE	1025
	Apt Elev	1027

RNAV (GPS) RWY 7

SIDNEY MUNI (N23)

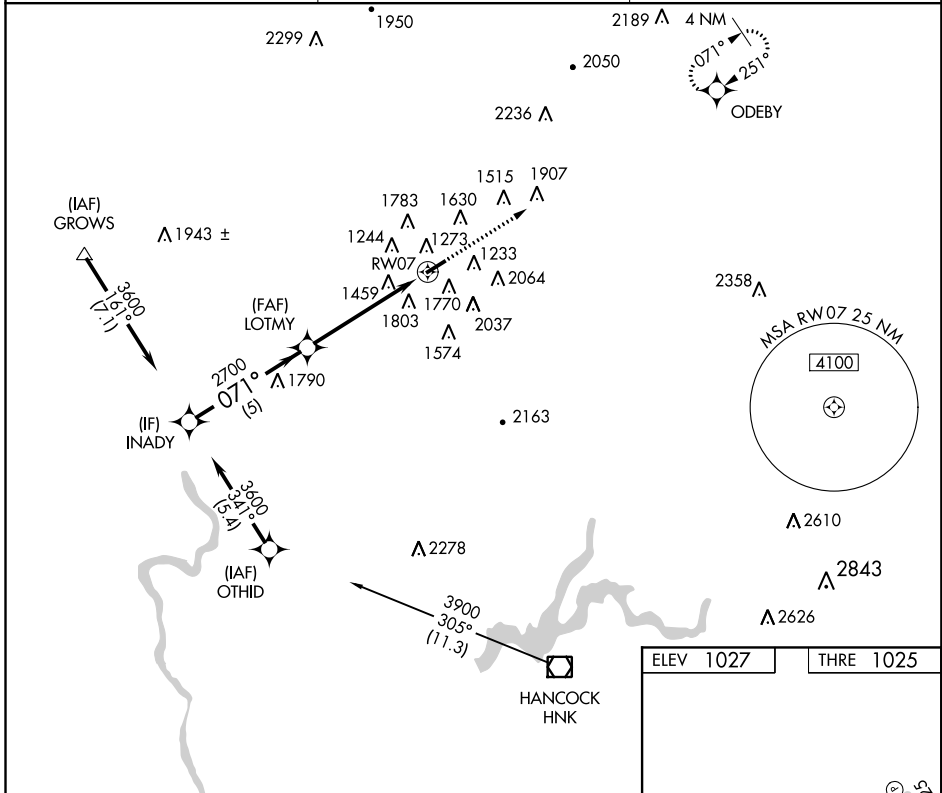
▽ DME/DME RNP-0.3 NA. When local altimeter setting not received, use Binghamton altimeter setting and increase all MDA 160 feet. Helicopter visibility reduction below 1 SM NA. Rwy 7 Straight-in and Circling minimums NA at night.

▲ NA

☄ -20°C/-4°F

MISSED APPROACH: Climb to 3700 direct ODEBY and hold.

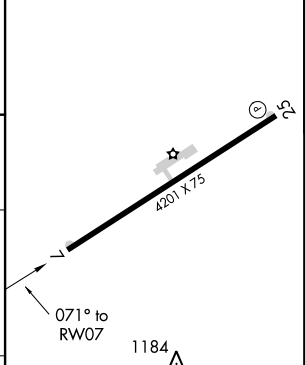
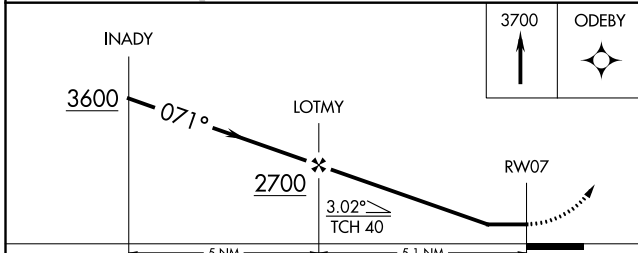
AWOS-3 118.275	BOSTON CENTER 133.25 279.5	UNICOM 122.8 (CTAF) 0
--------------------------	--------------------------------------	----------------------------------------



NE-2. 27 APR 2017 to 25 MAY 2017

NE-2. 27 APR 2017 to 25 MAY 2017

ELEV 1027	THRE 1025
-----------	-----------



CATEGORY	A	B	C	D
LNVA MDA	2140-1½ 1115 (1200-1¼)	2140-1½ 1115 (1200-1½)	2140-3 1115 (1200-3)	NA
☄ CIRCLING	2180-1¼ 1153 (1200-1¼)	2240-1½ 1213 (1300-1½)	2460-3 1433 (1500-3)	NA

REIL Rws 7 and 25 **0**
MIRL Rwy 7-25 **0**