

RNAV (GPS) RWY 1

LINCOLN PARK (NØ7)

APP CRS	Rwy Idg	2103
008°	TDZE	182
	Apt Elev	182

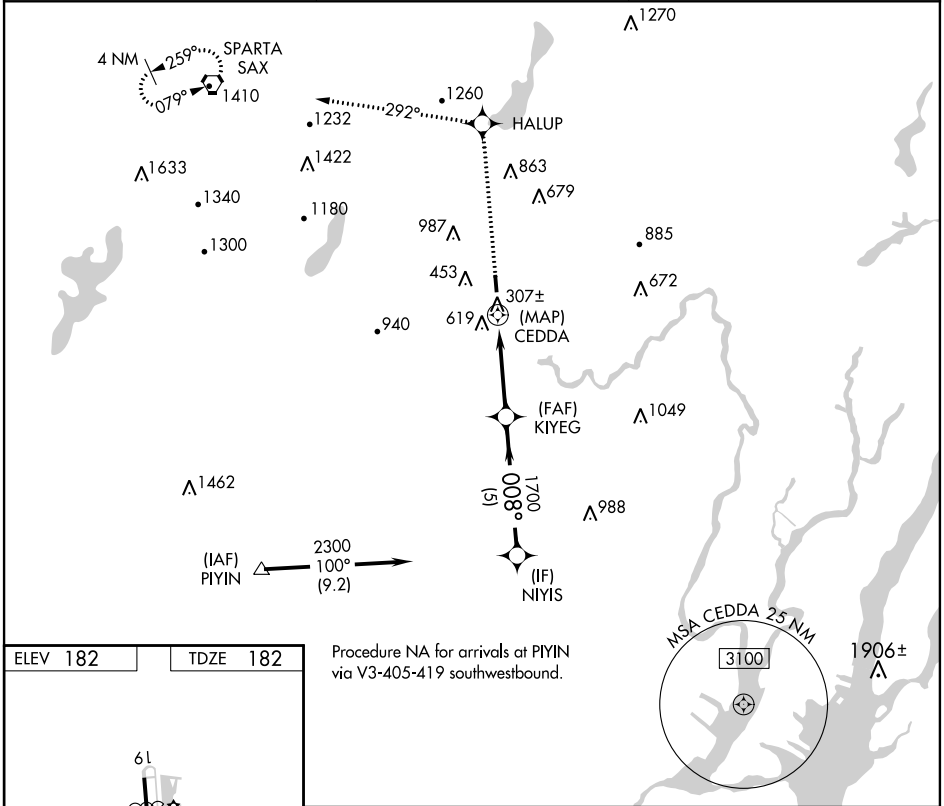
▼ Use Teterboro altimeter setting. DME/DME RNP-0.3 NA.
 ▲ NA Visibility reduction by helicopters NA.

MISSED APPROACH: Climb to 3000 direct HALUP and via 292° track to SAX VORTAC and hold.

NEW YORK APP CON
127.6 379.9

GCO
121.725

UNICOM
122.8 (CTAF) Ø



NE-2, 08 JAN 2015 to 05 FEB 2015

NE-2, 08 JAN 2015 to 05 FEB 2015

ELEV 182	TDZE 182
----------	----------

Procedure NA for arrivals at PIYIN via V3-405-419 southwestbound.



3000	↑ HALUP	292° tr	SAX	NIYIS
				2300
			KIYEG	Procedure Turn NA
			CEDDA	
			1700	
			3.00° TCH 30	
			1 NM	3.7 NM
				5 NM
CATEGORY	A	B	C	D
LNAV MDA	1240-1¼ 1058 (1100-1¼)		NA	
CIRCLING	1460-1¼ 1278 (1300-1¼)		NA	

RNAV (GPS) RWY 19

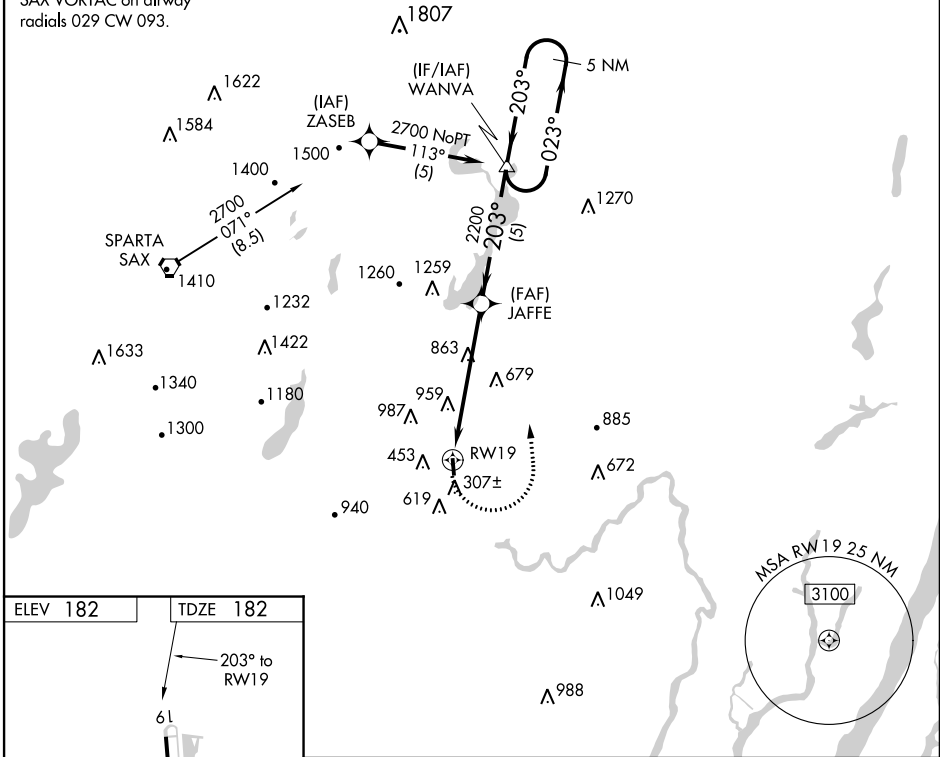
LINCOLN PARK (NØ7)

APP CRS	Rwy Idg	2683
203°	TDZE	182
	Apt Elev	182

<p>▽ Use Teterboro altimeter setting. DME/DME RNP-0.3 NA.</p> <p>▲ NA Visibility reduction by helicopters NA.</p>	<p>MISSED APPROACH: Climbing left turn to 2700 direct WANVA and hold.</p>
---	---

<p>NEW YORK APP CON</p> <p>127.6 379.9</p>	<p>GCO</p> <p>121.725</p>	<p>UNICOM</p> <p>122.8 (CTAF) Ø</p>
---	----------------------------------	--

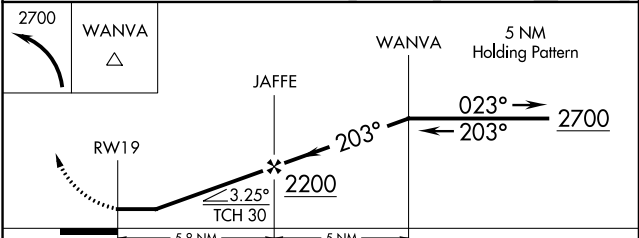
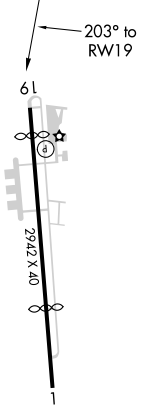
Procedure NA for arrivals at SAX VORTAC on airway radials 029 CW 093.



NE-2, 08 JAN 2015 to 05 FEB 2015

NE-2, 08 JAN 2015 to 05 FEB 2015

ELEV 182	TDZE 182
----------	----------



CATEGORY	A	B	C	D
LNAV MDA	1280-1¼ 1098 (1100-1¼)		NA	
CIRCLING	1460-1¼ 1278 (1300-1¼)		NA	

HIRL Rwy 1-19 Ø