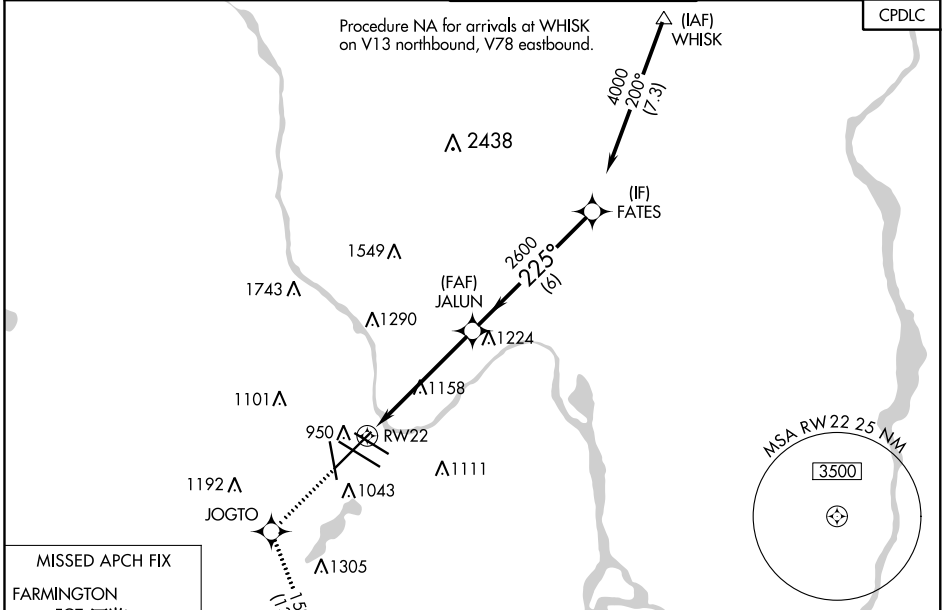


WAAS CH 60927 W22A	APP CRS 225°	Rwy Idg 10006 TDZE 828 Apt Elev 842
--	------------------------	--

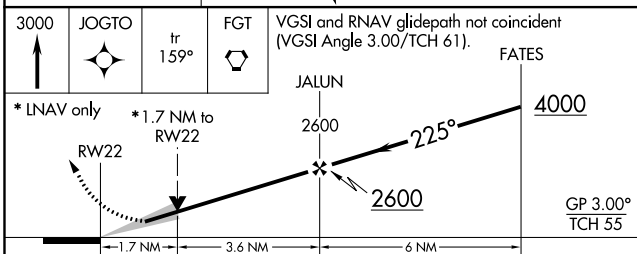
RNAV (GPS) RWY 22

MINNEAPOLIS-ST PAUL INTL/WOLD-CHAMBERLAIN (MSP)

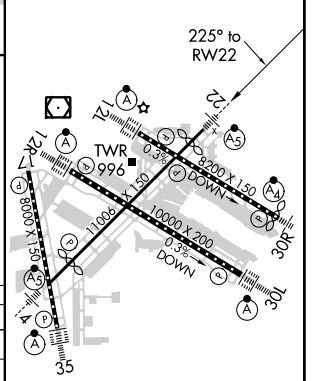
<p>⚠ DME/DME RNP-0.3 NA. For uncompensated Baro-VNAV systems, LNAV/VNAV NA below -27°C (-16°F) or above 54°C (130°F). For inop MALSR, increase LPV all Cats visibility to 1½ mile, LNAV/VNAV all Cats visibility to 1¼ mile and LNAV Cat E visibility to 1¼ mile.</p>	<p>MALSR </p>	<p>MISSED APPROACH: Climb to 3000 direct JOGTO and on track 159° to FGT VORTAC and hold.</p>	
		<p>D-ATIS ARR 135.35 239.275 DEP 120.8</p>	<p>MINNEAPOLIS APP CON 118.725 357.4 (Rwy 35) 119.3 357.4 (12L-30R, 4-22, 17) 126.95 357.4 (12R-30L)</p>
CLNC DEL 133.2			



<p>MISSED APCH FIX FARMINGTON FGT 178° 3.58 NM 4 NM</p>	
--	--



ELEV 842	D TDZE 828
----------	-------------------



CATEGORY	A	B	C	D	E
LPV DA	1190/40 362 (400-¾)				
LNAV/VNAV DA	1227/45 399 (400-⅝)				
LNAV MDA	1420/40 592 (600-¾)	1420-1¼ 592 (600-1¼)			
C CIRCLING	1420-1 578 (600-1)	1460-1¾ 618 (700-1¾)	1660-2¾ 818 (900-2¾)	1800-3 958 (1000-3)	

HIRL all Rwys
REIL Rwy 17
TDZ/CL Rwys 12L, 12R, 30L, and 35

NC-1, 27 APR 2017 to 25 MAY 2017

NC-1, 27 APR 2017 to 25 MAY 2017