


WAAS CH <b>65715</b> <b>W11B</b>	APP CRS <b>113°</b>	Rwy Idg <b>9501</b> TDZE <b>3200</b> Apt Elev <b>3206</b>
--	------------------------	---

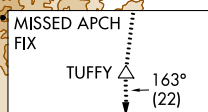
# RNAV (GPS) Y RWY 11

MISSOULA INTL (MISO)

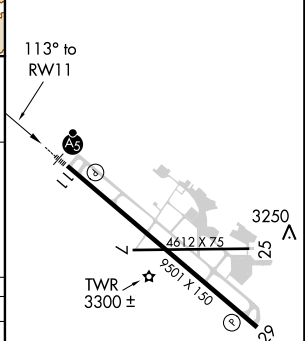
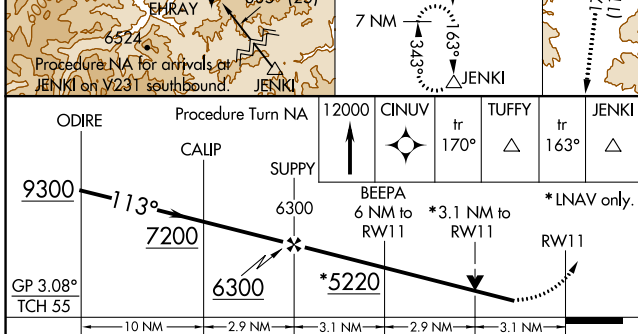
**▼** Inop table does not apply to LNAV % Cats A/B. For inop MALSR, increase LPV all Cats visibility to 2 1/2 miles. DME/DME RNP-0.3 NA. Visibility reduction by helicopters NA.  
**☁** -11°C # Missed approach requires minimum climb of 290 feet per NM to 8300.

**MALSR**  
 MISSED APPROACH: Climb to 12000 direct CINUV and on track 170° to TUFFY and on track 163° to JENKI and hold, continue climb-in-hold to 12000.

ATIS <b>126.65</b>	SPOKANE APP CON * <b>124.9 298.95</b>	MISSOULA TOWER * <b>118.4 (CTAF) 377.175</b>	GND CON <b>121.9</b>	UNICOM <b>122.95</b>
-----------------------	--	---	-------------------------	-------------------------



ELEV 3206	<b>D</b> TDZE 3200
-----------	--------------------



CATEGORY	A	B	C	D
LPV DA#	3896-2 696 (700-2)			
LNAV MDA#	4220-3/4 1020 (1100-3/4)	4220-1 1020 (1100-1)	4220-2 1/2	1020 (1100-2 1/2)
LNAV MDA%	5100-1 1/4 1900 (1900-1 1/4)	5100-1 1/2 1900 (1900-1 1/2)	5100-2 1/2	1900 (1900-2 1/2)
CIRCLING	5100-1 1/4 1894 (1900-1 1/4)	5100-1 1/2 1894 (1900-1 1/2)	5100-3	1894 (1900-3)

REIL Rwy 29  
 MIRL Rwy 7-25  
 HIRL Rwy 11-29 **D**

27 APR 2017 to 25 MAY 2017

27 APR 2017 to 25 MAY 2017