

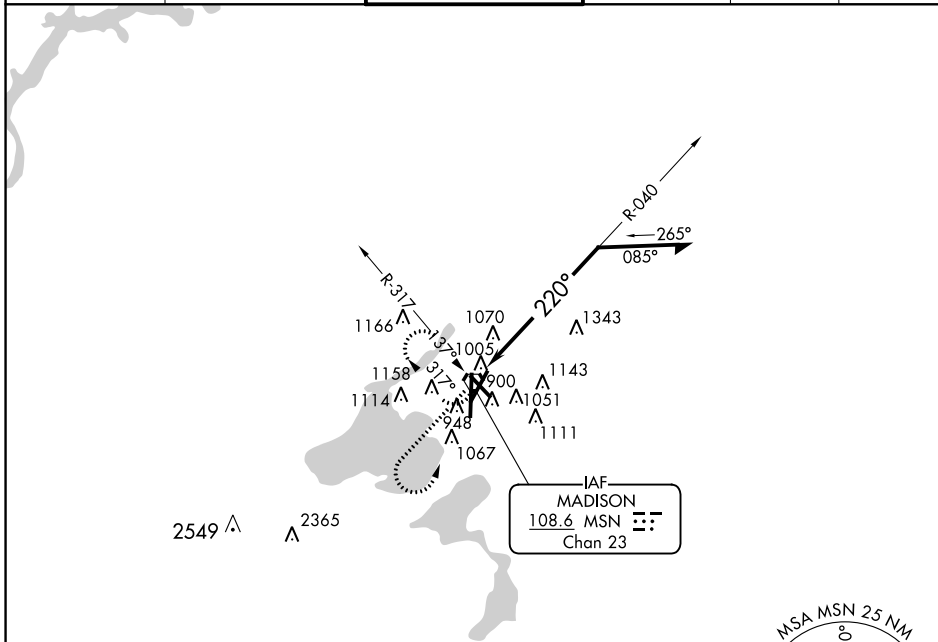
VORTAC MSN 108.6 Chan 23	APP CRS 220°	Rwy Idg 7015 TDZE 887 Apt Elev 887
--	------------------------	---

VOR RWY 21

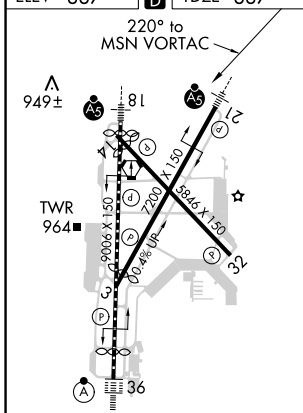
DANE COUNTY RGNL-TRUAX FIELD (MSN)

ASR	MALSR	MISSED APPROACH: Climb to 2400 then climbing left turn to 2800 direct MSN VORTAC and hold.
-----	-------	--

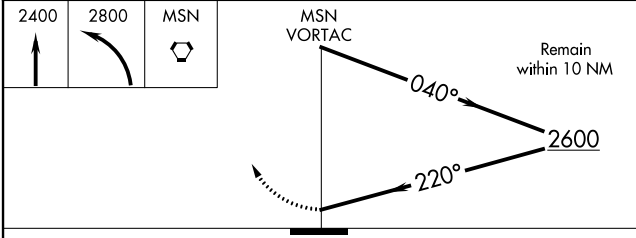
ATIS 124.65 278.3	MADISON APP CON * 135.45 343.7	MADISON TOWER * 119.3 (CTAF) 257.8	GND CON 121.9 348.6	CLNC DEL 121.62	UNICOM 122.95
-----------------------------	--	---	-------------------------------	---------------------------	-------------------------



ELEV 887 **D** TDZE 887



- HIRL all Rwys
- REIL Rwys 3 and 32
- REIL Rwy 14



CATEGORY	A	B	C	D
S-21	1700-1 813 (900-1)	1700-1¼ 813 (900-1¼)	1700-2½ 813 (900-2½)	1700-2¾ 813 (900-2¾)
CIRCLING	1700-1 813 (900-1)	1700-1¼ 813 (900-1¼)	1700-2½ 813 (900-2½)	1700-2¾ 813 (900-2¾)

EC-3, 12 OCT 2017 to 09 NOV 2017

EC-3, 12 OCT 2017 to 09 NOV 2017