

VOR/DME MHT <b>114.4</b> Chan <b>91</b>	APP CRS <b>335°</b>	Rwy Idg <b>7650</b> TDZE <b>265</b> Apt Elev <b>266</b>
---	------------------------	---

# VOR RWY 35

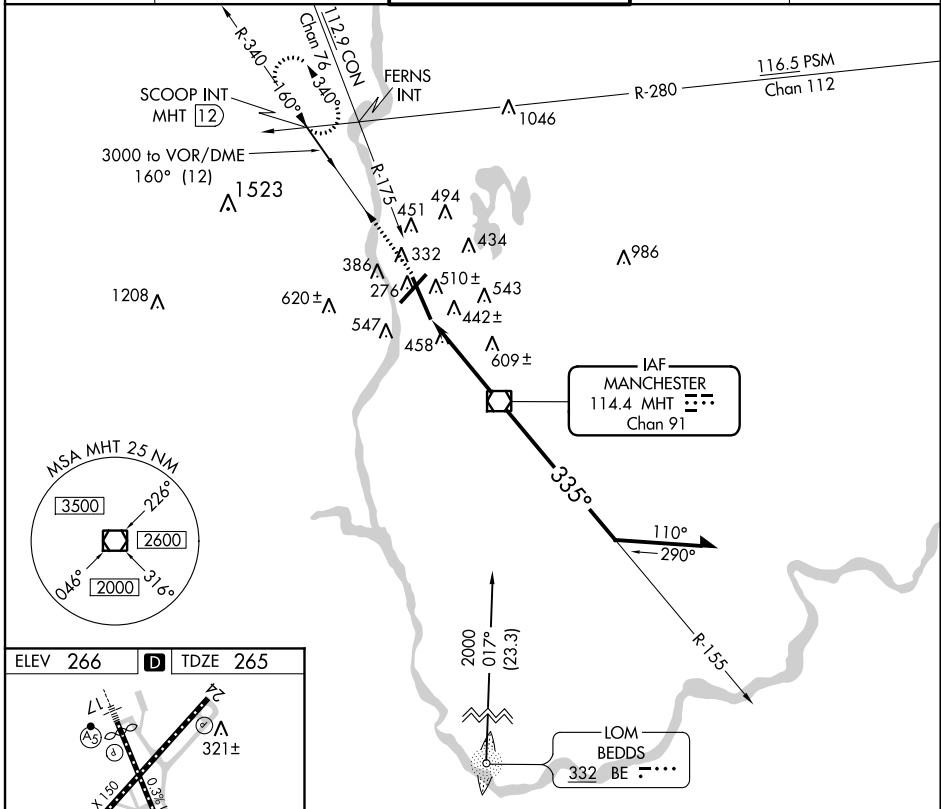
MANCHESTER (MHT)

**▼** Inoperative table does not apply to Cats C and D. For inoperative ALSF-2, increase S-35 Cats A/B visibility to RVR 5000. Helicopter visibility reduction below 3/4 SM not authorized.



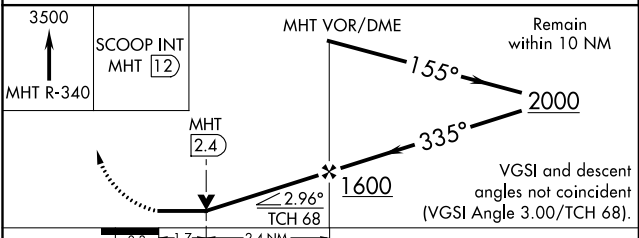
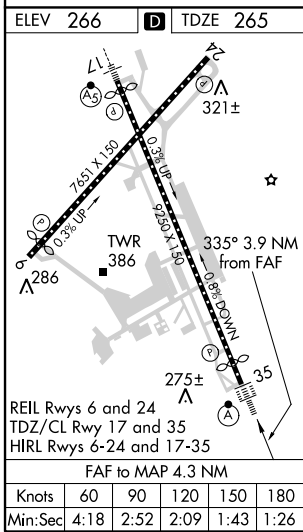
**MISSED APPROACH:** Climb to 3500 on MHT R-340 to SCOOP Int/MHT 12 DME and hold, climb-in-hold to 3500.

ATIS <b>119.55</b>	BOSTON APP CON <b>124.9 269.075</b>	MANCHESTER TOWER <b>121.3 239.025</b>	GND CON <b>121.9</b>	CLNC DEL <b>135.9</b>
-----------------------	--	--	-------------------------	--------------------------



NE-1, 08 JAN 2015 to 05 FEB 2015

NE-1, 08 JAN 2015 to 05 FEB 2015



CATEGORY	A	B	C	D
S-35	860/40 595 (600-3/4)		860-1 1/2 595 (600-1 1/2)	860-1 3/4 595 (600-1 3/4)
CIRCLING	880-1 614 (700-1)		880-1 3/4 614 (700-1 3/4)	880-2 614 (700-2)