

LOC/DME I-MHT 109.1 Chan 28	APP CRS 352°	Rwy Idg TDZE Apt Elev	7650 265 266
--	------------------------	-----------------------------	---

ILS RWY 35 (CAT II & III)

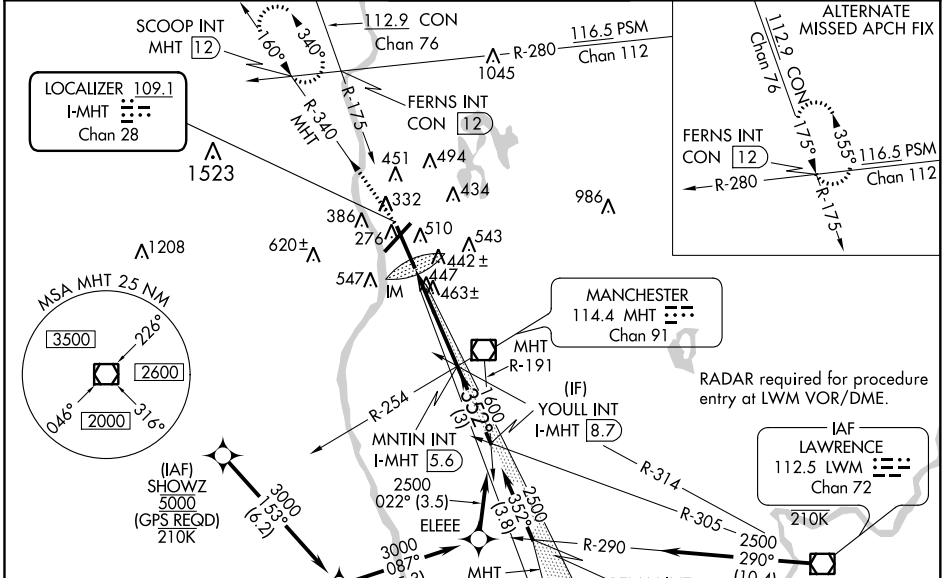
MANCHESTER (MHT)

⚠ Rwy 35 helicopter visibility reduction below 3/4 SM NA. Procedure NA when control tower closed. For inoperative ALS increase S-LOC 35 and XOHWI fix minimums S-LOC 35 Cat A/B visibility to RVR 5500. When using Nashua altimeter setting; inoperative table does not apply to S-ILS 35; for inoperative ALS, increase S-LOC 35 and XOHWI fix minimums S-LOC 35 Cat A/B visibility to RVR 5500.

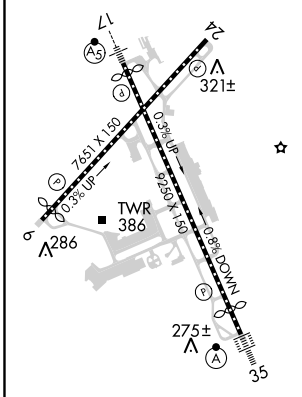
ALSF-2

MISSED APPROACH: Climb to 3500 on heading 352° and MHT VOR/DME R-340 to SCOOP INT/MHT 12 DME and hold, continue climb-in-hold to 3500.

ATIS 119.55	BOSTON APP CON 124.9 269.075	MANCHESTER TOWER 121.3 239.025	GND CON 121.9	CLNC DEL 135.9
-----------------------	--	--	-------------------------	--------------------------



ELEV 266	D	TDZE 265
----------	----------	----------



3500 MHT R-340 SCOOP INT

hdg 352°

Use I-MHT localizer DME when on LOC course.

MNTN INT I-MHT 5.6 YOULL INT I-MHT 8.7

IM 410 1600 352° 2500

GS 3.00° TCH 55

CATEGORY	A	B	C	D
S-ILS 35	CAT II RA 101/12 100 DA 365			
S-ILS 35	CAT III RVR 07			

CATEGORY II & III ILS - SPECIAL AIRCREW & AIRCRAFT CERTIFICATION REQUIRED

NE-1, 07 DEC 2017 to 04 JAN 2018

NE-1, 07 DEC 2017 to 04 JAN 2018