

WAAS CH 45801 W02A	APP CRS 026°	Rwy Idg TDZE Apt Elev	5000 949 957
----------------------------------------	------------------------	-----------------------------	-----------------------------------------

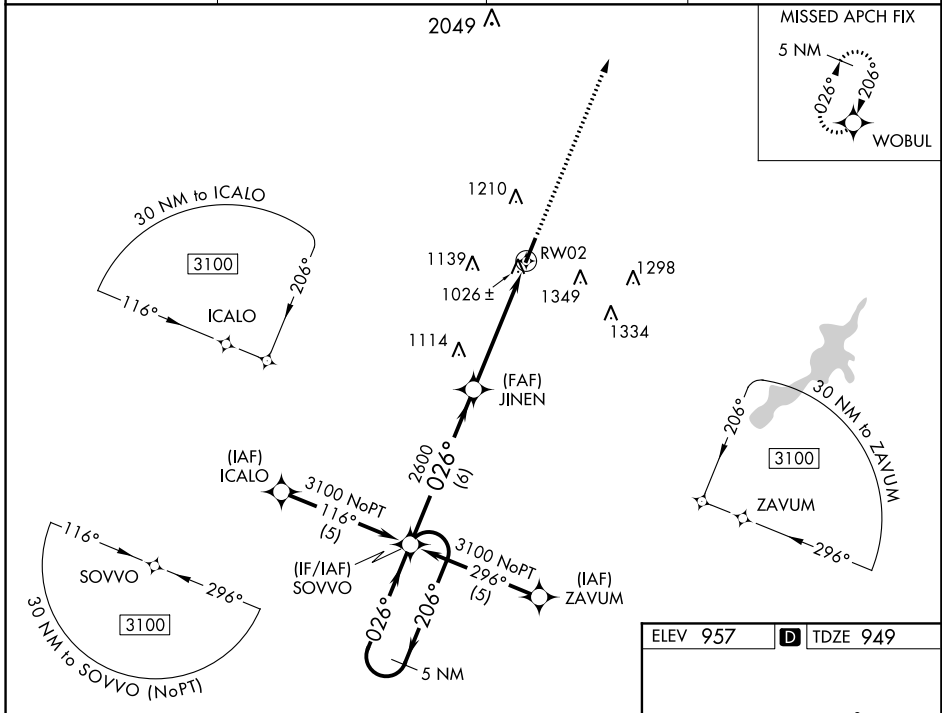
RNAV (GPS) RWY 2

DAYTON-WRIGHT BROTHERS (MGY)

Baro-VNAV NA when using James M Cox Dayton Intl altimeter setting. For uncompensated Baro-VNAV systems, LNAV/VNAV NA below -16°C (4°F) or above 47°C (116°F). DME/DME RNP-0.3 NA. Visibility reduction for helicopters NA. If local altimeter setting not received, use James M Cox Dayton Intl altimeter setting and increase all DAs/MDAs 60 feet.

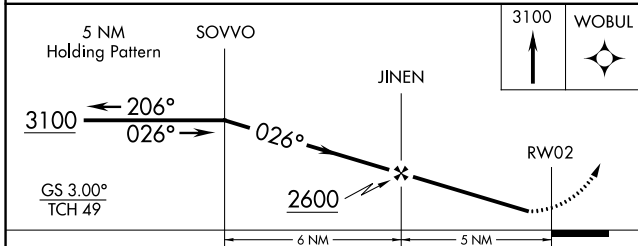
MISSED APPROACH: Climb to 3100 direct WOBUL and hold.

ASOS 118.375	COLUMBUS APP CON 118.85 269.275	CLNC DEL 119.4	UNICOM 122.8 (CTAF) U
------------------------	-------------------------------------------	--------------------------	----------------------------------------

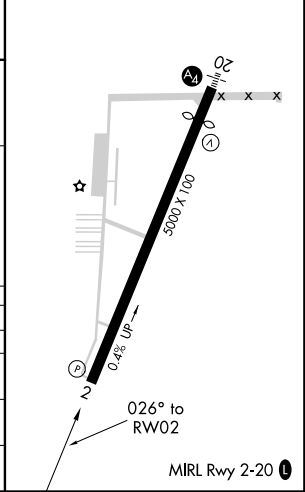


EC-2, 22 JUN 2017 to 20 JUL 2017

EC-2, 22 JUN 2017 to 20 JUL 2017



ELEV 957	D TDZE 949
----------	-------------------



CATEGORY	A	B	C	D
LPV DA	1214-1 265 (300-1)			
LNAV/VNAV DA	1299-1¼ 350 (400-1¼)			
LNAV MDA	1420-1	471 (500-1)	1420-1¼ 471 (500-1¼)	1420-1½ 471 (500-1½)
CIRCLING	1480-1¼	523 (600-1¼)	1520-1½ 563 (600-1½)	1660-2¼ 703 (800-2¼)