


# RNAV (RNP) Y RWY 18C

MEMPHIS INTL (MEM)

APP CRS	Rwy Idg	<b>11120</b>
<b>178°</b>	TDZE	<b>290</b>
	Apt Elev	<b>341</b>

**▼** For uncompensated Baro-VNAV systems, procedure NA below -10°C (14°F) or above 54°C (130°F). GPS required. For inoperative MALS, increase RNP 0.30 \* all Cats visibility to RVR 6000 and RNP 0.30 all Cats visibility to 1½ miles. Simultaneous approach authorized with Rwy 18R. Use of FD or AP providing RNAV track guidance required during simultaneous operations.  
\*Missed approach requires a minimum climb of 400 feet per NM to 1000.

**MALS** MISSED APPROACH: Climb to 5000 on track 178° to CEDEEN on track 135° to KEEZE and hold, continue climb-in-hold to 5000.

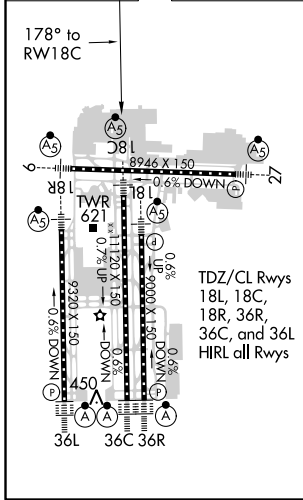


MEMPHIS APP CON	MEMPHIS TOWER	GND CON
<b>119.1 291.6</b> (176°-355°)	(Rwy 9-27) <b>118.3 257.8</b>	(Rwy 9-27) <b>121.0 379.2</b>
<b>125.8 338.3</b> (356°-175°)	(Rwys 18C-36C, 18L-36R) <b>119.7 257.8</b>	(Rwys 18C-36C, 18L-36R) <b>121.9 379.2</b>
	(Rwy 18R-36L) <b>128.425 257.8</b>	(Rwy 18R-36L) <b>121.65 379.2</b>

D-ATIS	CLNC DEL	CPDLC
<b>127.75</b>	<b>125.2</b>	



ELEV 341	<b>D</b>	TDZE 290
----------	----------	----------



5000	tr 178°	CEDEEN	tr 135°	KEEZE	LAURI
					3900
		JALDO			2000
		RW18C			2000
			5.2 NM	6.1 NM	
					GP 3.00° TCH 54
CATEGORY	A	B	C	D	
RNP 0.30 DA*		655/35	365 (400-¾)		
RNP 0.30 DA		747/54	457 (500-1¼)		

**AUTHORIZATION REQUIRED**

SE-1, 17 AUG 2017 to 14 SEP 2017

SE-1, 17 AUG 2017 to 14 SEP 2017