

WAAS CH 40407 W36B	APP CRS 358°	Rwy Idg TDZE 341 Apt Elev 341	10715
--	------------------------	---	--------------

RNAV (GPS) RWY 36C

MEMPHIS INTL (MEM)

▼ For inoperative ALSF, increase LPV all Cats. visibility to RVR 5000, increase LNAV Cat D visibility to RVR 6000. For uncompensated Baro-VNAV systems, LNAV/VNAV NA below -15°C (5°F) or above 48°C (118°F). DME/DME RNP-0.3 NA. Simultaneous approach authorized with Rwy 36L. LNAV procedure NA during simultaneous operations. Use of FD or AP providing RNAV track guidance required during simultaneous operations.

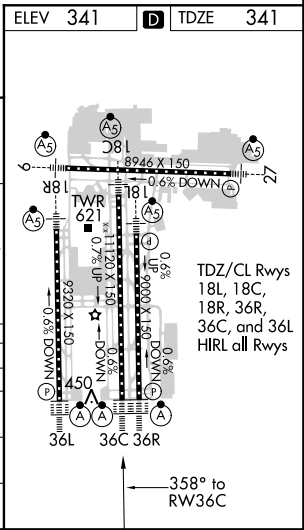
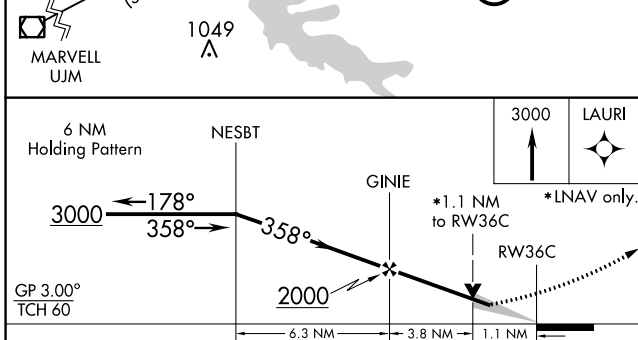
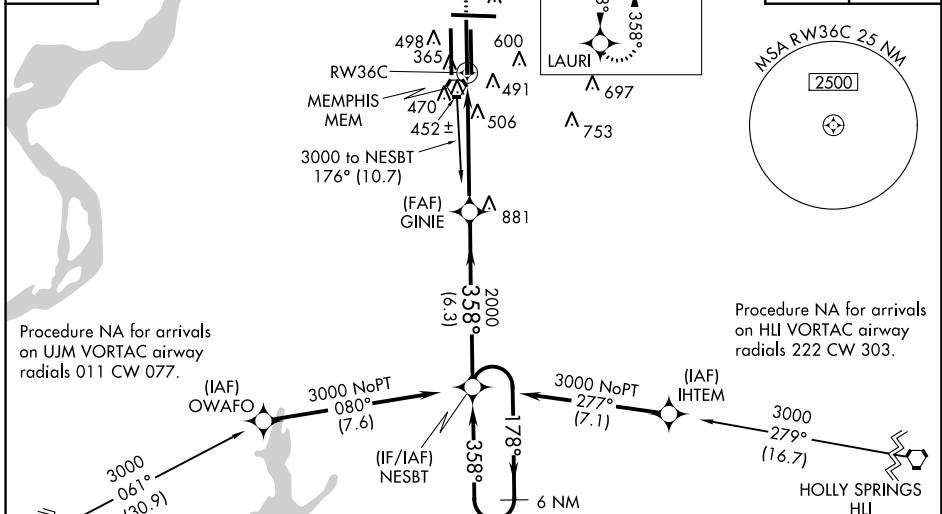
ALSF-2

MISSED APPROACH:
Climb to 3000 direct LAURI and hold.

MEMPHIS APP CON	MEMPHIS TOWER	GND CON
119.1 291.6 (176°-355°) 125.8 338.3 (356°-175°)	(Rwy 9-27) 118.3 257.8 (Rwys 18C-36C, 18L-36R) 119.7 257.8 (Rwy 18R-36L) 128.425 257.8	(Rwy 9-27) 121.0 379.2 (Rwys 18C-36C, 18L-36R) 121.9 379.2 (Rwy 18R-36L) 121.65 379.2

D-ATIS
127.75

CLNC DEL **125.2** CPDLC



CATEGORY	A	B	C	D
LPV DA		665/24	324 (400-1/2)	
LNAV/VNAV DA		765/50	424 (500-1)	
LNAV MDA	760/24	419 (500-1/2)	760/40 419 (500-3/4)	760/50 419 (500-1)
CIRCLING	940-1	599 (600-1)	940-1 1/2 599 (600-1 1/2)	940-2 599 (600-2)

SE-1, 07 DEC 2017 to 04 JAN 2018

SE-1, 07 DEC 2017 to 04 JAN 2018