

LOC I-JIM 108.7	APP CRS 271°	Rwy Idg TDZE Apt Elev	8946 292 341
---------------------------	------------------------	-----------------------------	---

ILS or LOC RWY 27

MEMPHIS INTL (MEM)

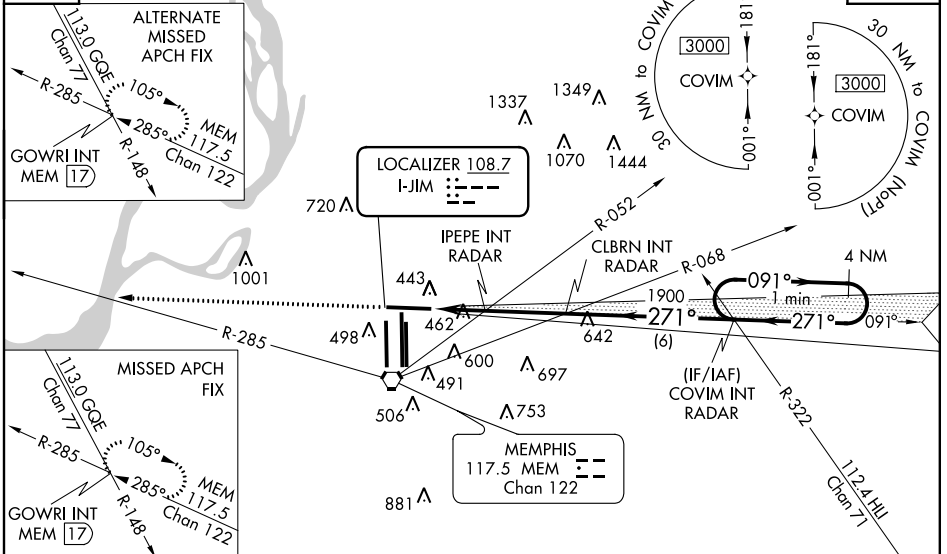
▼ For inop MALS, increase S-ILS Cat E visibility to RVR 4000, and S-LOC Cat E visibility to 2 mile, IPEPE Fix minimums S-LOC Cat E visibility to 1½ mile.

▲ MALS

MISSED APPROACH: Climb to 5000 and intercept MEM VORTAC R-285 to GOWRI INT/17 DME and hold, continue climb-in-hold to 5000.

MEMPHIS APP CON		MEMPHIS TOWER		GND CON	
119.1	291.6 (176°-355°)	(Rwy 9-27) 118.3	257.8	(Rwy 9-27) 121.0	379.2
125.8	338.3 (356°-175°)	(Rwys 18C-36C, 18L-36R) 119.7	257.8	(Rwys 18C-36C, 18L-36R) 121.9	379.2
		(Rwy 18R-36L) 128.425	257.8	(Rwy 18R-36L) 121.65	379.2

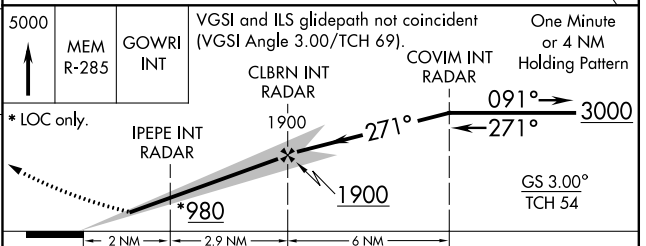
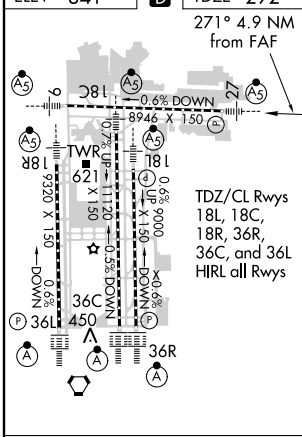
ATIS **127.75** **GPS or RADAR REQUIRED for TAA** CLNC DEL **125.2**



SE-1, 08 JAN 2015 to 05 FEB 2015

SE-1, 08 JAN 2015 to 05 FEB 2015

ELEV 341	D	TDZE 292
-----------------	----------	-----------------



3000	MEM R-285	GOWRI INT	VGS1 and ILS glidepath not coincident (VGS1 Angle 3.00/TCH 69).	One Minute or 4 NM Holding Pattern	
* LOC only.	IPEPE INT RADAR	CLBRN INT RADAR	COVIM INT RADAR	091° → 3000	
	2 NM	2.9 NM	6 NM	GS 3.00° TCH 54	
CATEGORY	A	B	C	D	E
S-ILS 27	492/24 200 (200-½)				
S-LOC 27	980/24	688 (700-½)	980-1½	688 (700-1½)	
C CIRCLING	980-1	639 (700-1)	980-2	1020-2¼	1140-2¾
			639 (700-2)	679 (700-2¼)	799 (800-2¾)
IPEPE FIX MINIMUMS (DUAL VOR RECEIVERS OR RADAR REQUIRED)					
S-LOC 27	720/24	428 (400-½)	720/40	428 (400-¾)	
C CIRCLING	920-1	579 (600-1)	920-1½	1020-2¼	1140-2¾
			579 (600-1½)	679 (700-2¼)	799 (800-2¾)

FAF to MAP 4.9 NM					
Knots	60	90	120	150	180
Min:Sec	4:54	3:16	2:27	1:58	1:38