

APP CRS 318°	Rwy Idg 5826
	TDZE 613
	Apt Elev 620

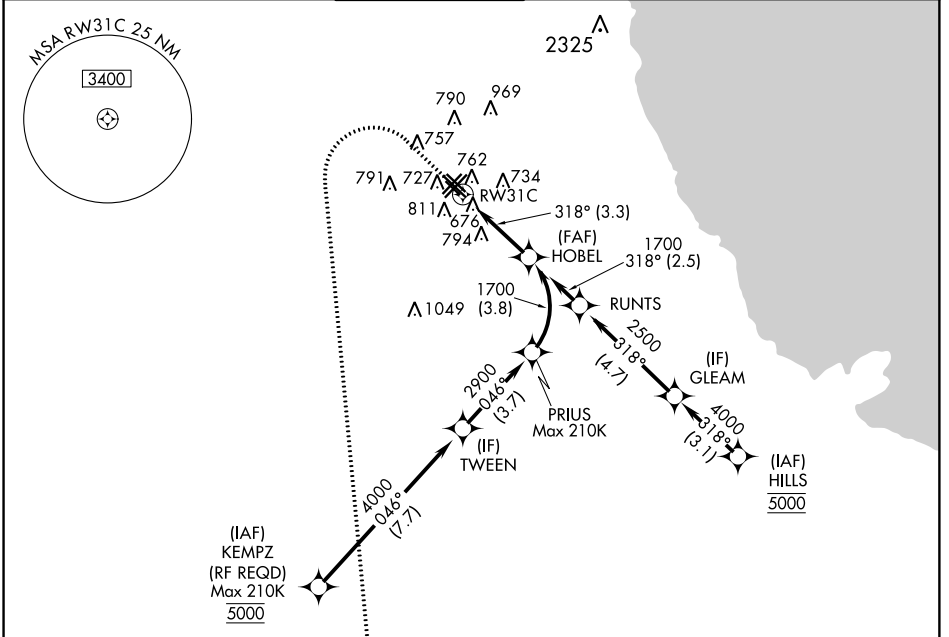
RNAV (RNP) Y RWY 31C

CHICAGO MIDWAY INTL (MDW)

▼ For uncompensated Baro-VNAV systems, procedure NA below -19°C (-2°F) or above 54°C (130°F). GPS required.

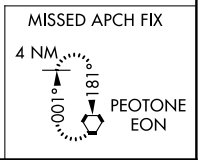
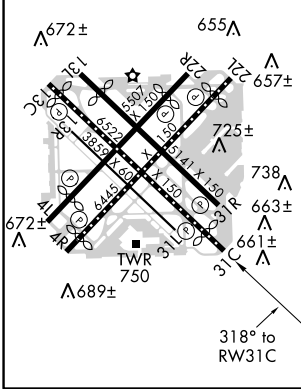
MISSED APPROACH: Climb to 1100 then climbing left turn to 2600 direct EON VORTAC and hold.

D-ATIS 132.75	CHICAGO APP CON 128.2 388.0	MIDWAY TOWER 135.2 269.125	GND CON 121.65	CLNC DEL 124.625	CPDLC
-------------------------	---------------------------------------	--------------------------------------	--------------------------	----------------------------	-------



ELEV 620	D	TDZE 613
----------	----------	----------

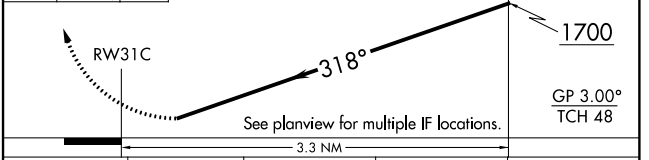
HIRL Rwy 13C-31C and 4R-22L
MIRL Rwy 4L-22R, 13L-31R, and 13R-31L
REIL Rwy 4R, 22L, and 31C
RLLS Rwy 13C and 31C



1100 2600 EON

VGSI and RNAV glidepath not coincident (VGSI Angle 3.00/TCH 63).

HOBEL 1700



CATEGORY	A	B	C	D
RNP 0.30 DA	961/58 348 (400-1¼)			

AUTHORIZATION REQUIRED

EC-3, 09 NOV 2017 to 07 DEC 2017

EC-3, 09 NOV 2017 to 07 DEC 2017