

WAAS CH <b>78011</b> W32A	APP CRS <b>320°</b>	Rwy Idg TDZE Apt Elev	<b>6399</b> <b>665</b> <b>668</b>
---------------------------------	------------------------	-----------------------------	---

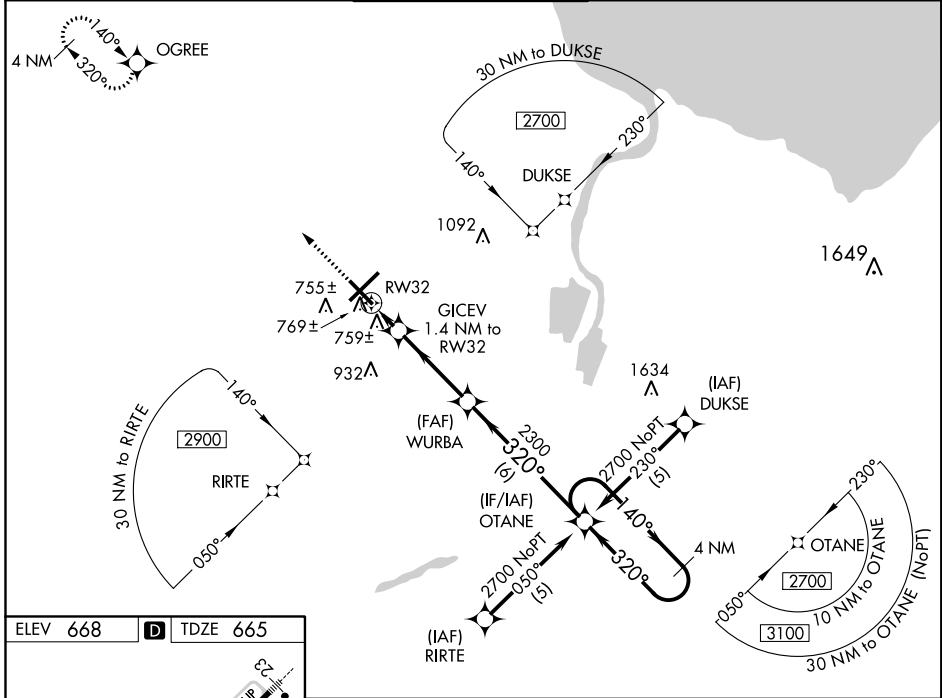
# RNAV (GPS) RWY 32

MBS INTL (MBS)

**⚠** Baro-Vnav NA when using Saginaw County H W Browne altimeter setting. For uncompensated Baro-Vnav systems, LNAV/VNAV NA below -16°C (4°F) or above 47° (116°F). When local altimeter setting not received, use Saginaw County H W Browne altimeter setting and increase all DA 36 feet and all MDA 40 feet, increase LPV all Cats visibility and LNAV Cat C visibility ¼ mile. DME/DME RNP- 0.3 NA.

MISSED APPROACH: Climb to 2300 direct OGREE and hold.

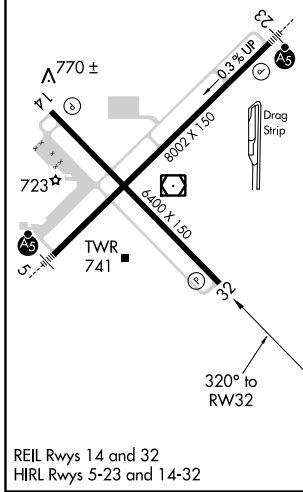
ATIS <b>125.925</b>	SAGINAW APP CON * 050°-229° <b>120.95</b> <b>235.625</b> 230°-049° <b>126.45</b> <b>235.625</b>	SAGINAW TOWER * <b>120.1</b> (CTAF) <b>0</b> <b>257.7</b>	GND CON <b>121.7</b>	CLNC DEL <b>121.85</b>	UNICOM <b>122.95</b>
------------------------	---	--	-------------------------	---------------------------	-------------------------



EC-1, 27 APR 2017 to 25 MAY 2017

EC-1, 27 APR 2017 to 25 MAY 2017

ELEV 668	<b>D</b>	TDZE 665
----------	----------	----------



SAGINAW, MICHIGAN  
Amdt 1 15JAN09

43°32'N-84°05'W

# RNAV (GPS) RWY 32

MBS INTL (MBS)

	2300	OGREE	OTANE	4 NM Holding Pattern
		GICEV 1.4 NM to RW32	WURBA	140° → 2700
		RW32		← 320°
		1.4 NM	3.5 NM	6 NM
CATEGORY	A	B	C	D
LPV DA	964-1 299 (300-1)			
LNAV/VNAV DA	1057-1½ 392 (400-1½)			
LNAV MDA	1040-1 375 (400-1)			1040-1½ 375 (400-1½)
CIRCLING	1100-1 432 (500-1)	1120-1 452 (500-1)	1120-1½ 452 (500-1½)	1220-2 552 (600-2)