

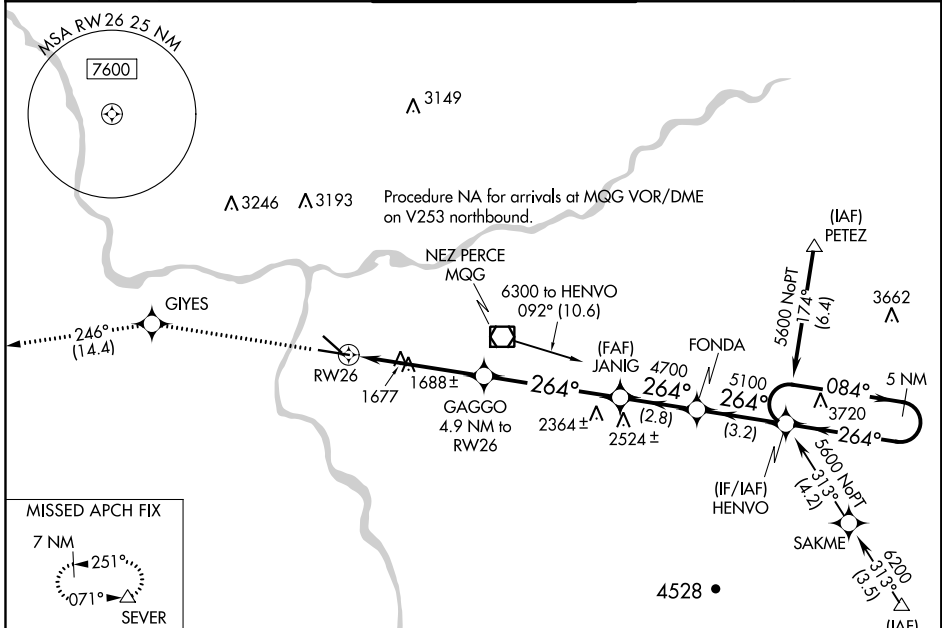
WAAS CH 78012 W 26A	APP CRS 264°	Rwy Idg TDZE Apt Elev	6511 1442 1442
---	------------------------	-----------------------------	---

RNAV (GPS) Y RWY 26

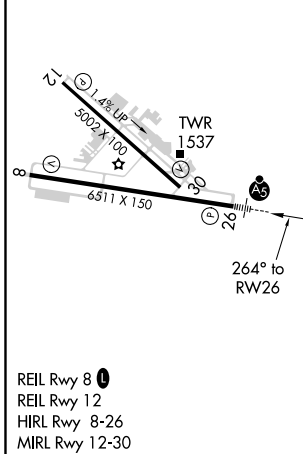
LEWISTON-NEZ PERCE COUNTY (LWS)

	For uncompensated Baro-VNAV systems, LNAV/VNAV NA below -17°C (2°F) or above 47°C (116°F). DME/DME RNP-0.3 NA.		MISSED APPROACH: Climb to 7000 direct GIYES and on track 246° to SEVER and hold, continue climb-in-hold to 7000.

ASOS 135.575	SEATTLE CENTER 123.95 290.55	LEWISTON TOWER ★ 119.4 (CTAF) 318.8	GND CON 121.9	UNICOM 122.95
------------------------	--	---	-------------------------	-------------------------



ELEV 1442	D	TDZE 1442
------------------	----------	------------------



7000	GIYES	tr 246°	SEVER	VGSI and RNAV glidepath not coincident.			
				5 NM Holding Pattern			
*LNAV only							
		GAGGO 4.9 NM to RW26	JANIG 4700	FONDA 5100	HENVO 5600	084° → 264° ←	
		*1.4 NM to RW26				GP 3.00° TCH 51	
		1.4	3.5 NM	4.9 NM	2.8 NM	3.2 NM	
CATEGORY	A	B	C	D			
LPV DA	1642-1/2		200 (200-1/2)				
LNAV/VNAV DA	1962-1 1/4		520 (600-1 1/4)				
LNAV MDA	1940-1/2		498 (500-1/2)		1940-1		498 (500-1)
CIRCLING	2000-1		558 (600-1)		2000-1 1/2		2160-2 1/4
					558 (600-1 1/2)		718 (800-2 1/4)

NW-1, 07 DEC 2017 to 04 JAN 2018

NW-1, 07 DEC 2017 to 04 JAN 2018