

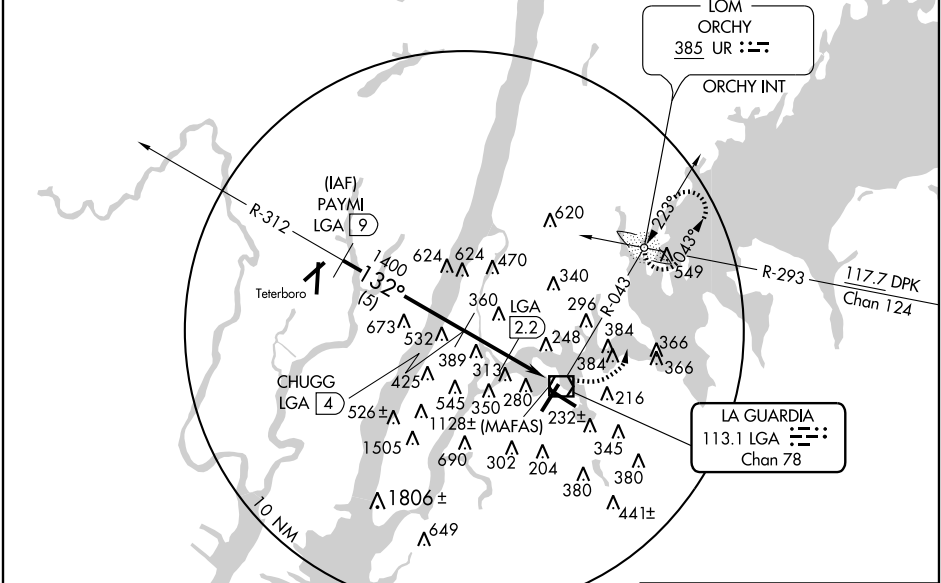
VOR/DME LGA 113.1 Chan 78	APP CRS 132°	Rwy Idg TDZE Apt Elev 22	N/A N/A 22
--	------------------------	--	-------------------------

VOR/DME-H
NEW YORK/LA GUARDIA (LGA)

⚠ MISSED APPROACH: Climbing left turn to 2000 via LGA VOR/DME R-043 to ORCHY LOM/Int and hold.

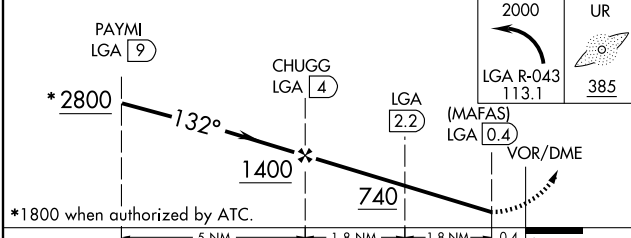
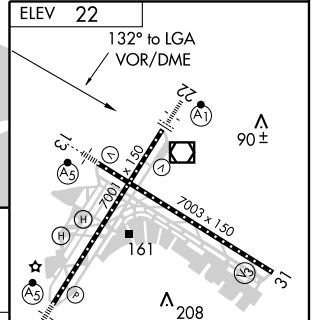
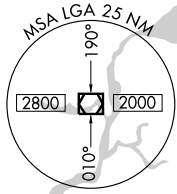
ATIS ARR ATIS DEP	125.95 127.05	NEW YORK APP CON 120.8 263.0	LA GUARDIA TOWER 118.7 263.0	GND CON 121.7 263.0	CLNC DEL 135.2
----------------------	--------------------------------	--	--	-------------------------------	--------------------------

RADAR REQUIRED

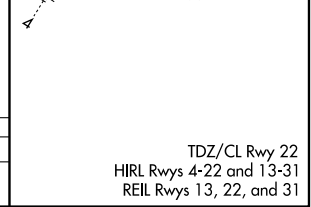


NE-2, 19 NOV 2009 to 17 DEC 2009

NE-2, 19 NOV 2009 to 17 DEC 2009



CATEGORY	A	B	C	D
CIRCLING	580-1 558 (600-1)	600-1 578 (600-1)	620-1½ 598 (600-1½)	700-2¼ 678 (700-2¼)



TDZ/CL Rwy 22
HIRL Rwys 4-22 and 13-31
REIL Rwys 13, 22, and 31