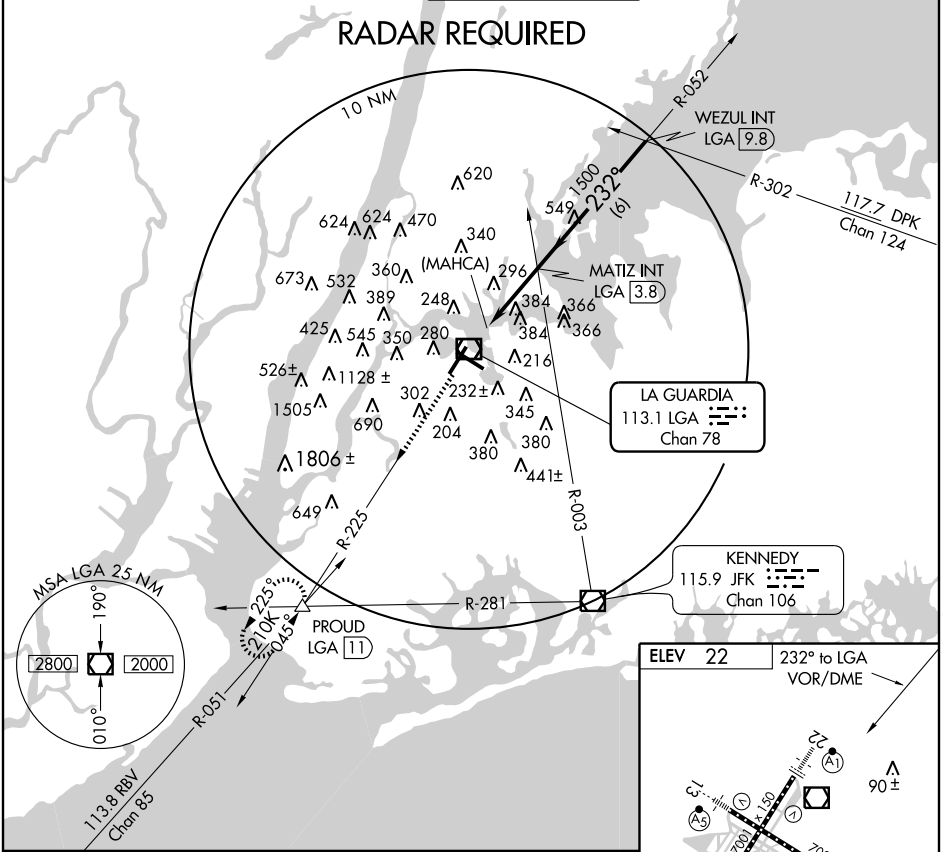


VOR/DME LGA 113.1 Chan 78	APP CRS 232°	Rwy Idg TDZE Apt Elev	N/A N/A 22
---	------------------------	--------------------------	---------------------------------------

VOR/DME-G
NEW YORK/LA GUARDIA (LGA)

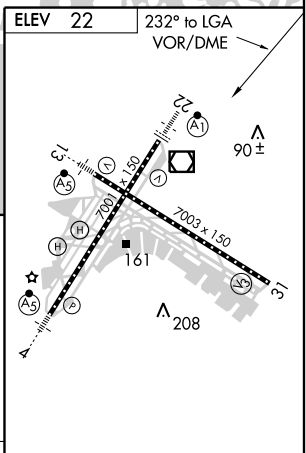
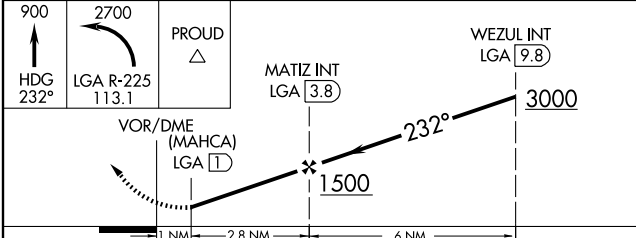
MISSSED APPROACH: Climb to 900 heading 232° then climbing left turn to 2700 via LGA VOR/DME R-225 to PROUD Int and hold.

ATIS ARR ATIS DEP	125.95 127.05	NEW YORK APP CON	120.8 263.0	LA GUARDIA TOWER	118.7 263.0	GND CON	121.7 263.0	CLNC DEL	135.2
----------------------	--------------------------------	------------------	--------------------	------------------	--------------------	---------	--------------------	----------	--------------



NE-2, 19 NOV 2009 to 17 DEC 2009

NE-2, 19 NOV 2009 to 17 DEC 2009



CATEGORY	A	B	C	D
CIRCLING	640-1¼ 618 (700-1¼)		640-1¼ 618 (700-1¼)	700-2¼ 678 (700-2¼)

TDZ/CL Rwy 22
HIRL Rwy 4-22 and 13-31
REIL Rwy 13, 22, and 31