

RNAV (RNP) Z RWY 22

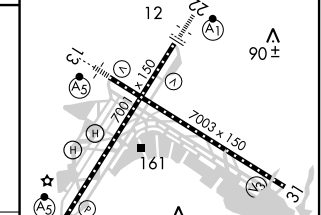
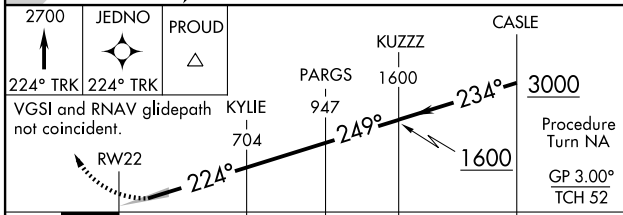
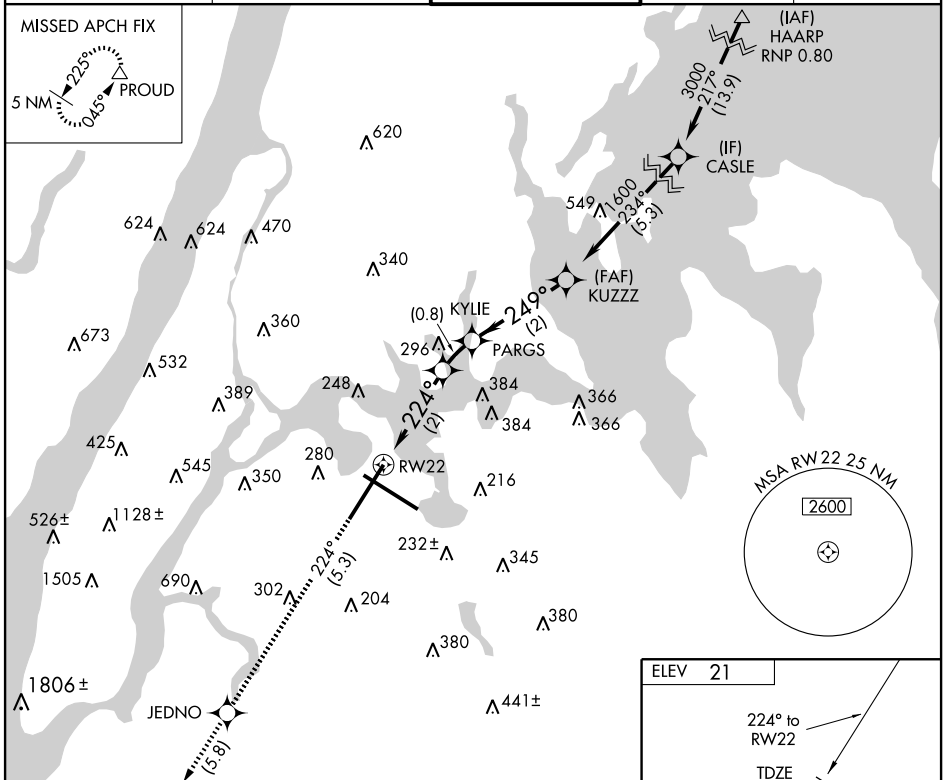
NEW YORK/ LA GUARDIA (LGA)

APP CRS	Rwy Idg	7001
224°	TDZE	12
	Apt Elev	21

▽ RF and GPS required. For uncompensated Baro-VNAV systems, procedure NA below -12°C (11°F) or above 48°C (119°F). For inoperative ALSF, increase RNP 0.30* visibility to RVR 5000 and RNP 0.30 to RVR 6000.
△NA *Missed approach requires minimum climb of 310 feet per NM to 700.

ALSF-1 MISSED APPROACH: Climb to 2700 via 224° track to JEDNO and 224° track to PROUD and hold.

ATIS ARR	125.95	NEW YORK APP CON	120.8 263.0	LA GUARDIA TOWER	118.7 263.0	GND CON	121.7 263.0	CLNC DEL	135.2
ATIS DEP	127.05								



CATEGORY	A	B	C	D
RNP 0.30 * DA		313/24	301 (300-½)	
RNP 0.30 DA		393/40	381 (400-¾)	

SPECIAL AIRCRAFT & AIRCREW AUTHORIZATION REQUIRED

TDZ/CL Rwy 22
 HIRL Rwy 4-22 and 13-31
 REIL Rwy 13, 22, and 31

NE-2, 19 NOV 2009 to 17 DEC 2009

NE-2, 19 NOV 2009 to 17 DEC 2009