


RNAV (RNP) Z RWY 4

NEW YORK/ LA GUARDIA (LGA)

| | | |
|-------------|----------|-------------|
| APP CRS | Rwy Idg | 7001 |
| 044° | TDZE | 21 |
| | Apt Elev | 21 |

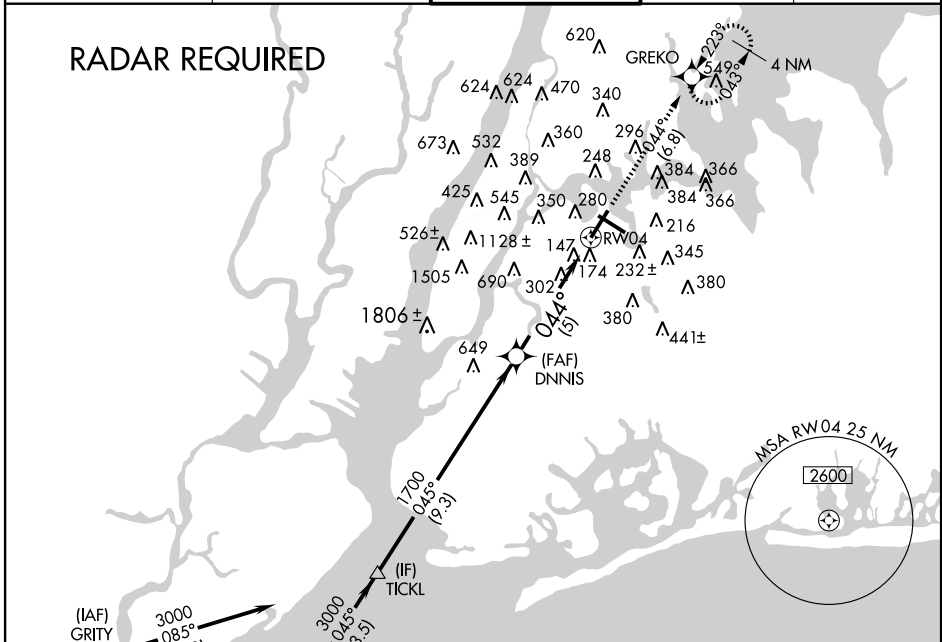
▼ GPS required. Visibility reduction by helicopters NA. For uncompensated Baro-VNAV systems, procedure NA below -12°C (11°F) or above 48°C (118°F). Inoperative table does not apply to RNP 0.18. For inoperative MALS, increase RNP 0.30 visibility to 1½.

▲ NA

MALS
 MISSED APPROACH: Climb to 2000 via 044° track to GREKO and hold.

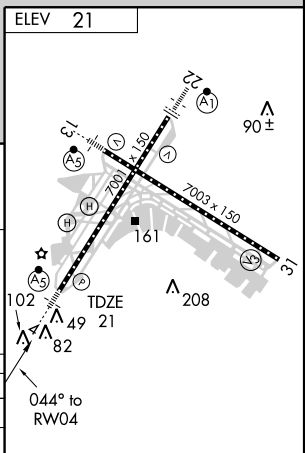
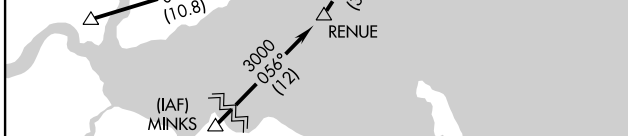
| | | | | | | | | | |
|----------|---------------|------------------|--------------------|------------------|--------------------|---------|--------------------|----------|--------------|
| ATIS ARR | 125.95 | NEW YORK APP CON | 120.8 263.0 | LA GUARDIA TOWER | 118.7 263.0 | GND CON | 121.7 263.0 | CLNC DEL | 135.2 |
| ATIS DEP | 127.05 | | | | | | | | |

RADAR REQUIRED



NE-2, 19 NOV 2009 to 17 DEC 2009

NE-2, 19 NOV 2009 to 17 DEC 2009



| | | | | | | |
|----------------|-------|--------|------|-------|------|-------|
| TICKL | 3000 | 0.45° | 1700 | 0.44° | 2000 | GREKO |
| Procedure Turn | NA | | | | | |
| GP | 3.00° | | | | | |
| TCH | 52 | | | | | |
| | | 9.3 NM | | 5 NM | | |

| | | | | |
|-------------|---|--------|-------------|---|
| CATEGORY | A | B | C | D |
| RNP 0.18 DA | | 337/50 | 316 (400-1) | |
| RNP 0.30 DA | | 474/50 | 453 (500-1) | |

SPECIAL AIRCRAFT & AIRCREW AUTHORIZATION REQUIRED