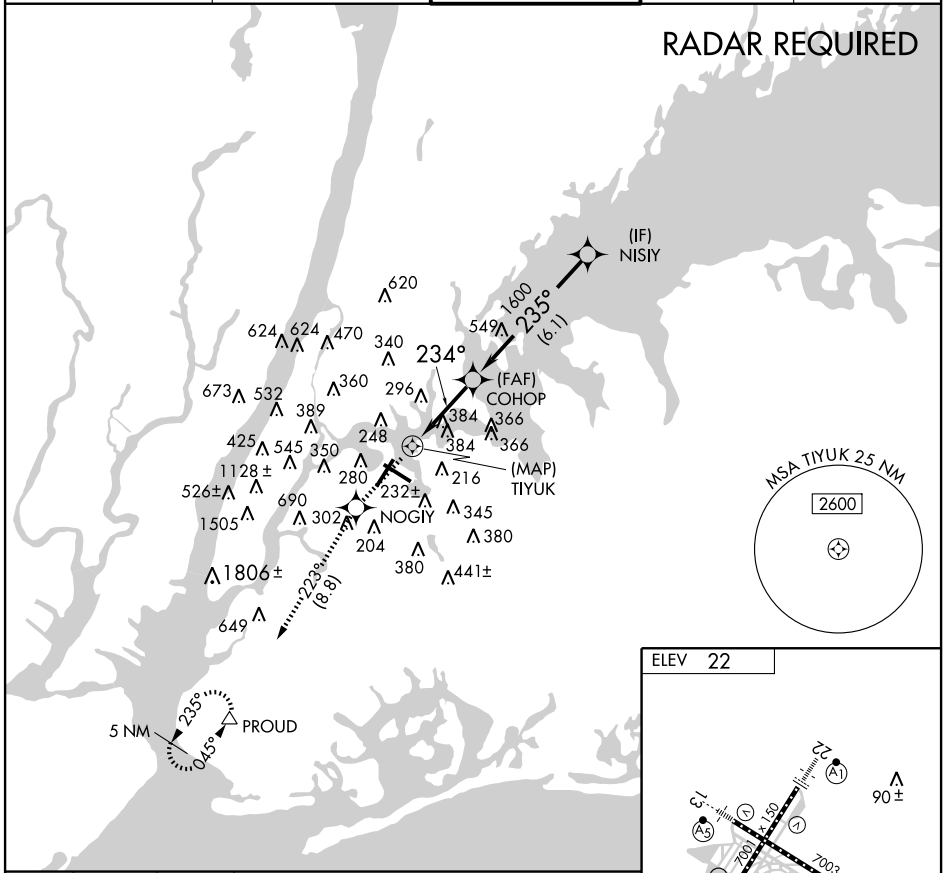


RNAV (GPS) -B
NEW YORK/ LA GUARDIA (LGA)

APP CRS 234°	Rwy Idg TDZE Apt Elev	N/A N/A 22
------------------------	-----------------------------	---------------------------------------

<p>▽ DME/DME RNP-0.3 NA.</p> <p>▲ MISSED APPROACH: Climb to 2700 direct NOGIY and via 223° track to PROUD and hold.</p>		ATIS ARR ATIS DEP	125.95 127.05	NEW YORK APP CON	120.8 263.0	LA GUARDIA TOWER	118.7 263.0	GND CON	121.7 263.0	CLNC DEL	135.2
---	--	----------------------	--------------------------------	------------------	--------------------	------------------	--------------------	---------	--------------------	----------	--------------

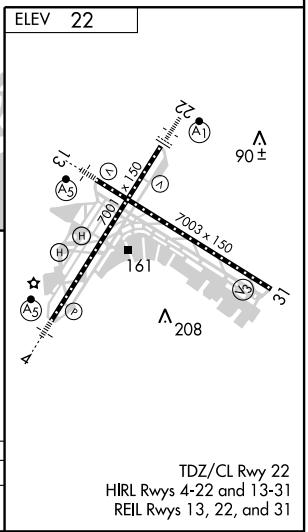


RADAR REQUIRED

NE-2, 19 NOV 2009 to 17 DEC 2009

NE-2, 19 NOV 2009 to 17 DEC 2009

2700	NOGIY 223° TRK	PROUD	COHOP	NISIY
<p>TIYUK</p> <p>234°</p> <p>1600</p> <p>235°</p> <p>3000</p>				
0.8		3.2 NM		6.1 NM
CATEGORY	A	B	C	D
CIRCLING	640-1	618 (700-1)	640-1¾ 618 (700-1¾)	700-2¼ 678 (700-2¼)



TDZ/CL Rwy 22
HIRL Rwys 4-22 and 13-31
REIL Rwys 13, 22, and 31