

RNAV (GPS) Y RWY 22

NEW YORK / LA GUARDIA (LGA)

WAAS CH 70318 W22A	APP CRS 224°	Rwy Idg TDZE 12 Apt Elev 21	7001
--	------------------------	---	-------------

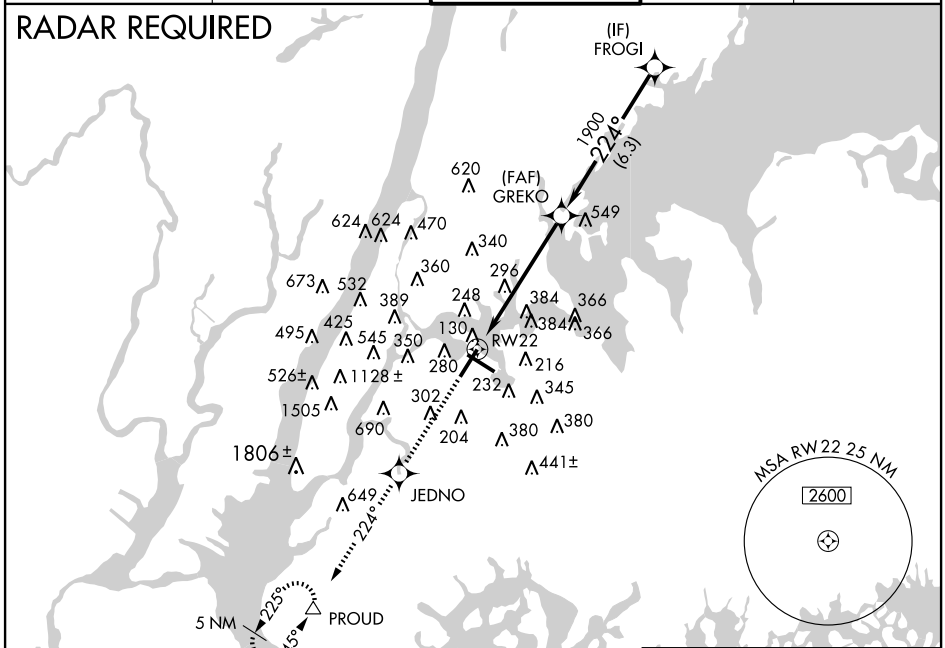
⚠ When VGSI inop, circling Rwy 4 NA at night. For uncompensated Baro-VNAV systems, LNAV/VNAV NA below -15°C (5°F) or above 49°C (120°F). DME/DME RNP-0.3 NA.



MISSED APPROACH: Climb to 2700 direct JEDNO and via 224° track to PROUD and hold.

ATIS ARR 125.95	NEW YORK APP CON 120.8 263.0	LA GUARDIA TOWER 118.7 263.0	GND CON 121.7 263.0	CLNC DEL 135.2
ATIS DEP 127.05				

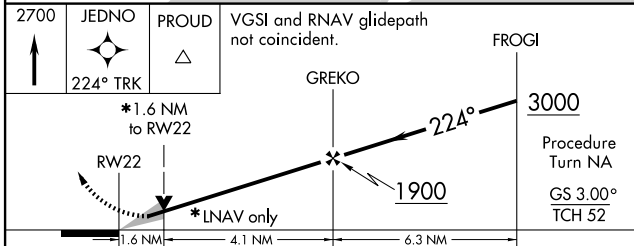
RADAR REQUIRED



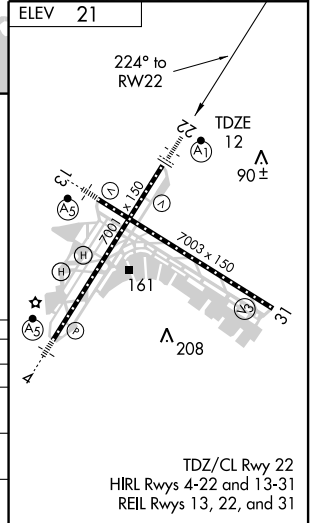
NE-2, 19 NOV 2009 to 17 DEC 2009

NE-2, 19 NOV 2009 to 17 DEC 2009

2700	JEDNO	PROUD	VGSI and RNAV glidepath not coincident.
↑	224° TRK	△	



CATEGORY	A	B	C	D
LPV DA		264/24	250 (300-½)	
LNAV/VNAV DA		527/60	515 (500-1¼)	
LNAV MDA	580/24	568 (600-½)	580/50 568 (600-1)	580/60 568 (600-1¼)
CIRCLING	640-1	619 (700-1)	640-1¾ 619 (700-1¾)	700-2¼ 679 (700-2¼)



TDZ/CL Rwy 22
HIRL Rwy 4-22 and 13-31
REIL Rwy 13, 22, and 31