

NEW YORK, NEW YORK

AL-289 (FAA)

RNAV (GPS) Y RWY 4

NEW YORK/ LA GUARDIA (LGA)

WAAS CH 60918 W04A	APP CRS 044°	Rwy Idg TDZE Apt Elev	7001 21 21
---------------------------------	------------------------	-----------------------------	---------------------------------------

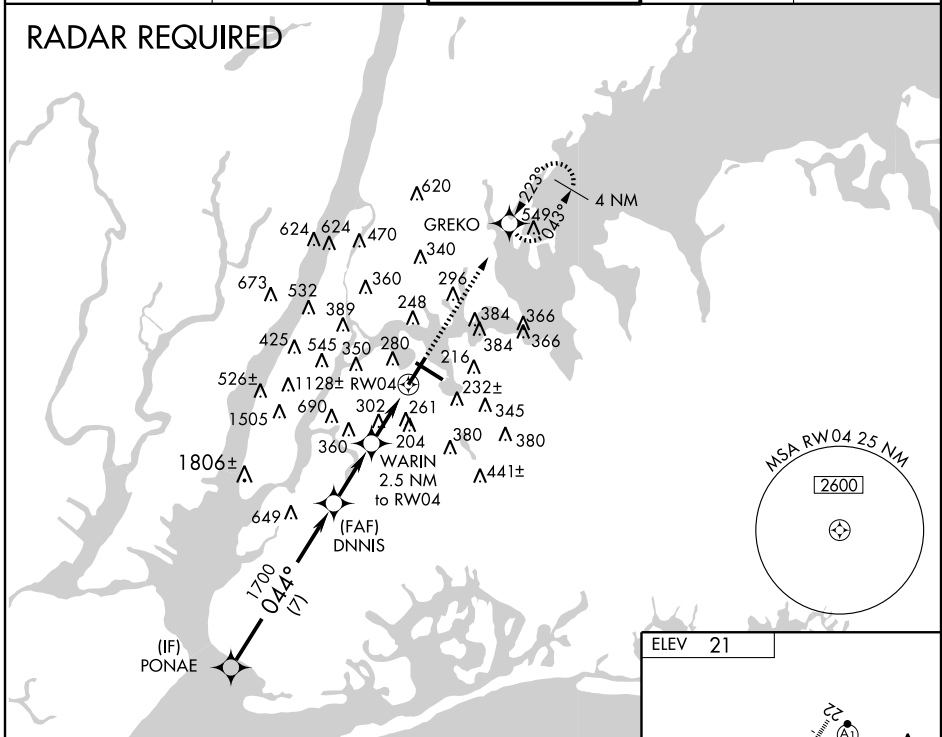
For uncompensated Baro-VNAV systems, LNAV/VNAV NA below -15°C (5°F) or above 48°C (118°F). Inoperative table does not apply to LPV all Cats and LNAV Cats A and B. When VGSI inop, straight-in/circling Rwy 4 procedure NA at night. Visibility reduction by helicopters NA. DME/DME RNP-0.3 NA.



MISSED APPROACH: Climb to 2000 direct GREKO and hold.

ATIS ARR ATIS DEP	125.95 127.05	NEW YORK APP CON 120.8 263.0	LA GUARDIA TOWER 118.7 263.0	GND CON 121.7 263.0	CLNC DEL 135.2
----------------------	--------------------------------	--	--	-------------------------------	--------------------------

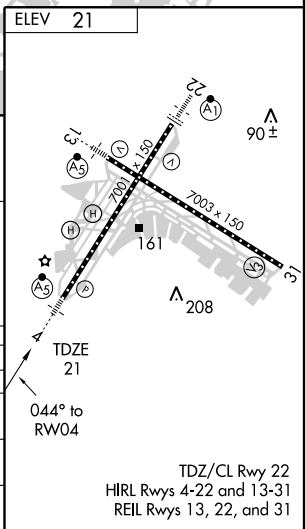
RADAR REQUIRED



NE-2, 19 NOV 2009 to 17 DEC 2009

NE-2, 19 NOV 2009 to 17 DEC 2009

PONAE				VGSJ and RNAV glidepath not coincident.		2000	GREKO
3000		DNNIS		WARIN 2.5 NM to RW04		↑	☉
Procedure Turn NA		044°		*860			
GS 3.00°		1700		*LNAV only.		RW04	
TCH 52		7 NM		2.5 NM		2.5 NM	
CATEGORY	A		B		C		D
LPV DA	323/50		302 (400-1)				
LNAV/VNAV DA	566-1½		545 (600-1½)				
LNAV MDA	560/50		539 (600-1)		560/60		539 (600-1¼)
CIRCLING	640-1 619 (700-1)		640-1½ 619 (700-1½)		700-2¼		679 (700-2¼)



NEW YORK, NEW YORK
Amdt 2 09295

40°47'N - 73°52'W

NEW YORK/ LA GUARDIA (LGA) RNAV (GPS) Y RWY 4

TDZ/CL Rwy 22
HIRL Rws 4-22 and 13-31
REIL Rws 13, 22, and 31