

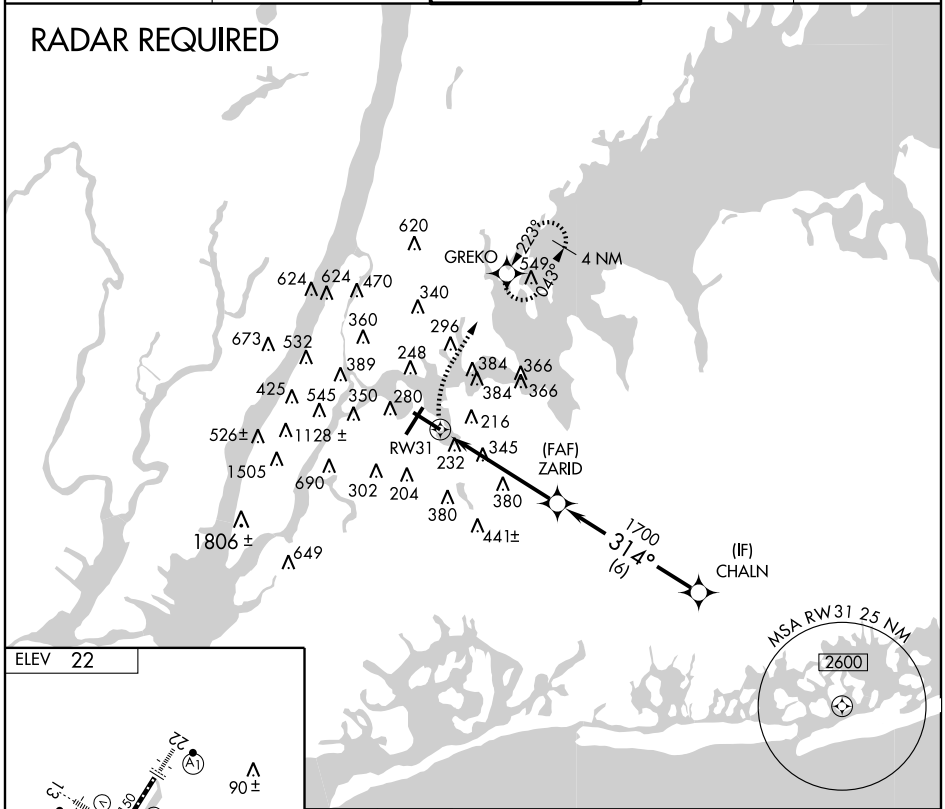
# RNAV (GPS) RWY 31

NEW YORK / LA GUARDIA (LGA)

APP CRS <b>314°</b>	Rwy Idg TDZE Apt Elev	<b>7003</b> <b>8</b> <b>22</b>
------------------------	-----------------------------	--------------------------------------

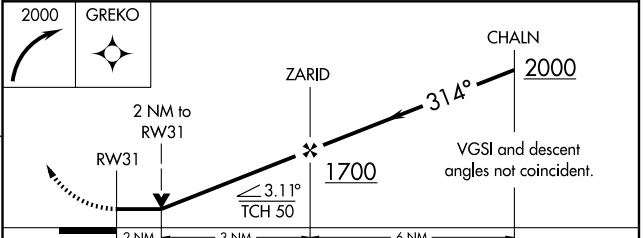
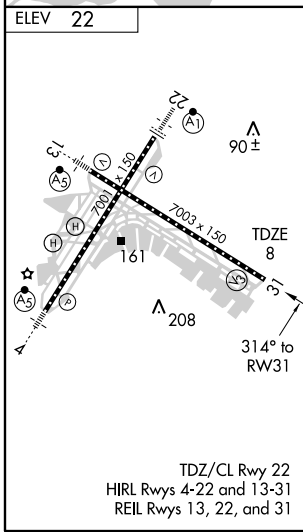
<p>DME/DME RNP-0.3 NA.</p>		<p>MISSED APPROACH: Climbing right turn to 2000 direct GREKO and hold.</p>			
ATIS ARR ATIS DEP	<b>125.95</b> <b>127.05</b>	NEW YORK APP CON <b>120.8 263.0</b>	LA GUARDIA TOWER <b>118.7 263.0</b>	GND CON <b>121.7 263.0</b>	CLNC DEL <b>135.2</b>

## RADAR REQUIRED



NE-2, 19 NOV 2009 to 17 DEC 2009

NE-2, 19 NOV 2009 to 17 DEC 2009



CATEGORY	A	B	C	D
LNNAV MDA	640/50	632 (700-1)	640-1¾ 632 (700-1¾)	640-2 632 (700-2)
CIRCLING	640-1	618 (700-1)	640-1¾ 618 (700-1¾)	700-2¼ 678 (700-2¼)