

RNAV (GPS) RWY 13

NEW YORK/ LA GUARDIA (LGA)

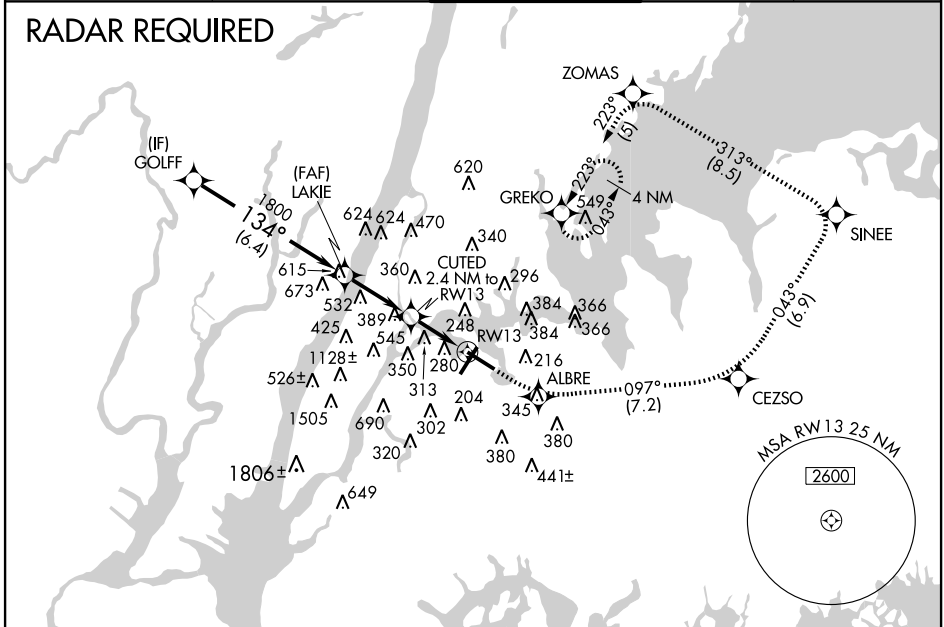
WAAS CH 65618 W13A	APP CRS 134°	Rwy Idg TDZE 7003 13 Apt Elev 22
---------------------------------	------------------------	---

▲ For inoperative MALSR, increase LPV visibility to RVR 4000 all Cats. Baro-VNAV NA below -1.5°C (5°F). DME/DME RNP-0.3 NA.



MISSED APPROACH: Climb to 2000 direct ALBRE and via 097° track to CEZSO and via 043° track to SINEE and left turn via 313° track to ZOMAS and via 223° track to GREKO and hold.

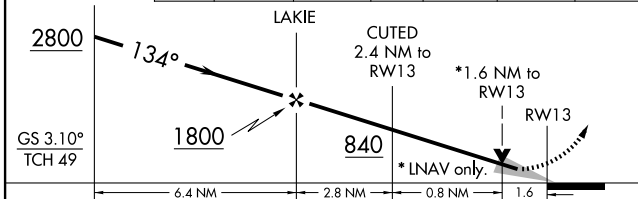
ATIS ARR 125.95	NEW YORK APP CON 120.8 263.0	LA GUARDIA TOWER 118.7 263.0	GND CON 121.7 263.0	CLNC DEL 135.2
ATIS DEP				



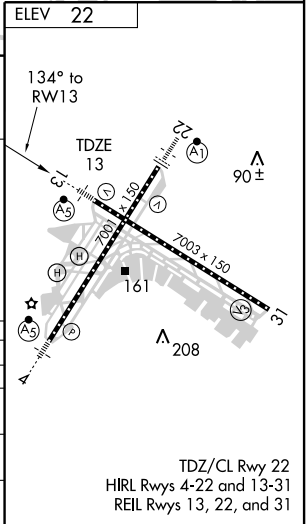
NE-2, 19 NOV 2009 to 17 DEC 2009

NE-2, 19 NOV 2009 to 17 DEC 2009

ELEV 22



CATEGORY	A	B	C	D
LPV DA	263/24		250 (300-½)	
LNAV/VNAV DA	679-1¾		666 (700-1¾)	
LNAV MDA	580/24 567 (600-½)		580/50 567 (600-1)	
CIRCLING	680-2¼ 658 (700-2¼)		700-2¼ 678 (700-2¼)	



TDZ/CL Rwy 22
HIRL Rwy 4-22 and 13-31
REIL Rwy 13, 22, and 31