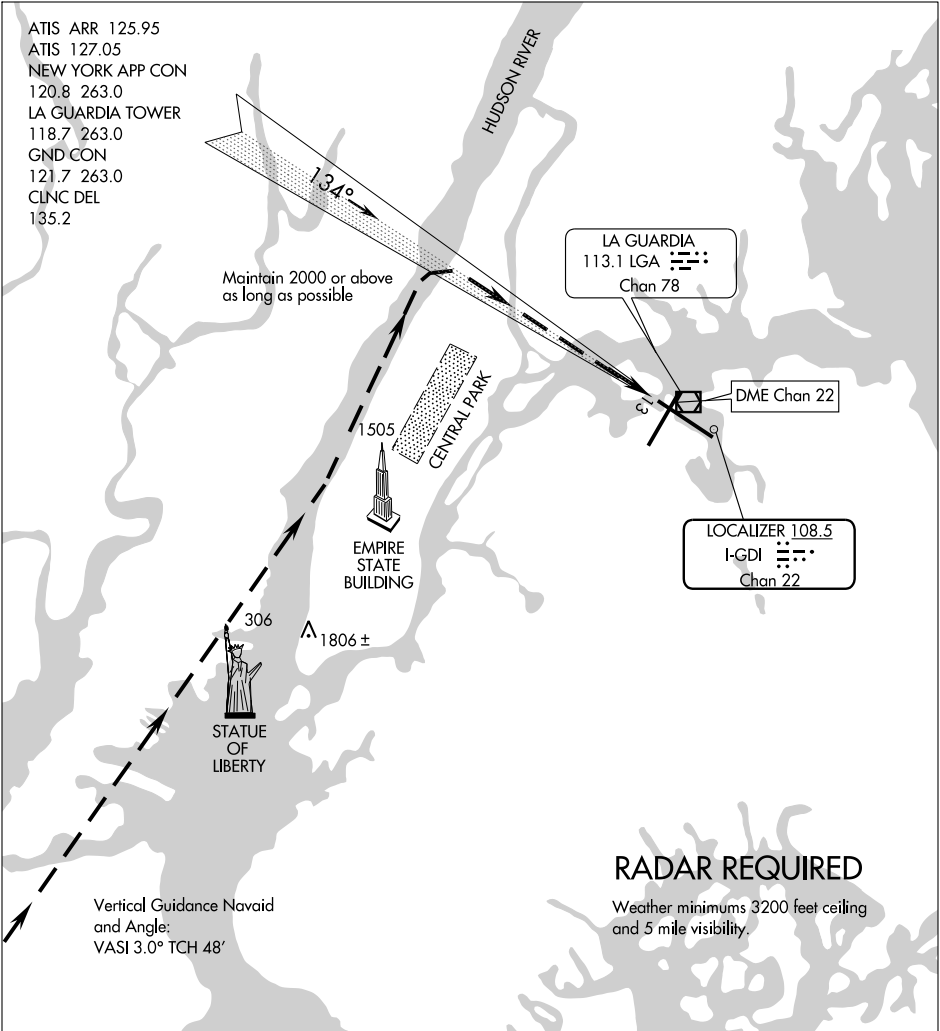


RIVER VISUAL RWY 13

AL-289 (FAA)

NEW YORK/LA GUARDIA (LGA)
NEW YORK, NEW YORK

ATIS ARR 125.95
 ATIS 127.05
 NEW YORK APP CON
 120.8 263.0
 LA GUARDIA TOWER
 118.7 263.0
 GND CON
 121.7 263.0
 CLNC DEL
 135.2



NE-2, 19 NOV 2009 to 17 DEC 2009

NE-2, 19 NOV 2009 to 17 DEC 2009

Vertical Guidance Navaid
 and Angle:
 VASI 3.0° TCH 48'

RADAR REQUIRED

Weather minimums 3200 feet ceiling
 and 5 mile visibility.

1 NM	2	3	4	5	6	7	8	9	10	11	12	13	14	15	16
------	---	---	---	---	---	---	---	---	----	----	----	----	----	----	----

RIVER VISUAL RWY 13

When cleared for a RIVER VISUAL Rwy 13 approach, remain over the Hudson River until starting the turn to final approach north of Central Park. Expect 3500 feet until abeam Central Park (2500 feet when authorized by ATC).

RIVER VISUAL RWY 13

40°47'N-73°52'W

NEW YORK, NEW YORK
NEW YORK/LA GUARDIA (LGA)