

# ILS or LOC RWY 4

NEW YORK/LA GUARDIA (LGA)

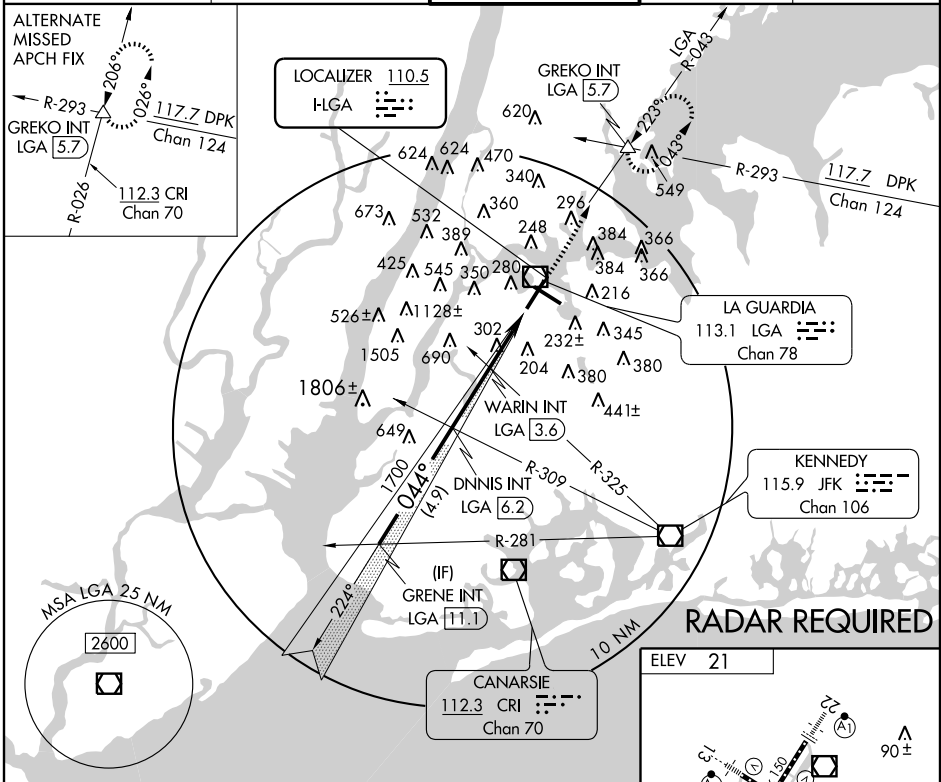
LOC I-LGA <b>110.5</b>	APP CRS <b>044°</b>	Rwy Idg TDZE Apt Elev	<b>7001</b> <b>21</b> <b>21</b>
---------------------------	------------------------	-----------------------------	---------------------------------------

When VGSI inop, straight-in/circling Rwy 4 procedure NA at night.  
 Visibility reduction by helicopters NA. For inoperative MALSR, increase S-LOC 4 Cats A/B visibility to RVR 5000.

MALSR  

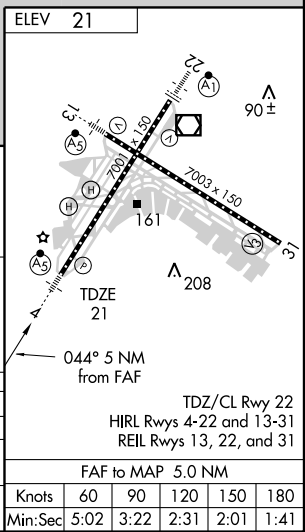
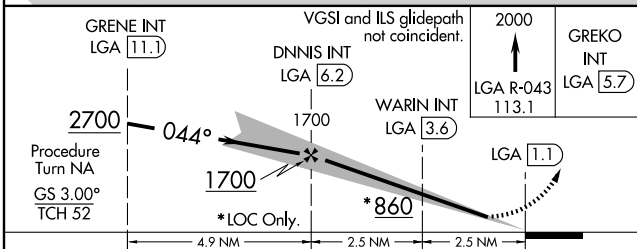

MISSED APPROACH: Climb to 2000 via LGA VOR/DME R-043 to GREKO Int/LGA 5.7 DME and hold.

ATIS ARR ATIS DEP	<b>125.95</b> <b>127.05</b>	NEW YORK APP CON	<b>120.8 263.0</b>	LA GUARDIA TOWER	<b>118.7 263.0</b>	GND CON	<b>121.7 263.0</b>	CLNC DEL	<b>135.2</b>
----------------------	--------------------------------	------------------	--------------------	------------------	--------------------	---------	--------------------	----------	--------------



NE-2, 19 NOV 2009 to 17 DEC 2009

NE-2, 19 NOV 2009 to 17 DEC 2009



CATEGORY	A	B	C	D
S-ILS 4	305/40 284 (300-¾)			
S-LOC 4	560/40 539 (600-¾)	560/50 539 (600-1)		560/60 539 (600-¼)
CIRCLING	640-1 619 (700-1)		640-1¾ 619 (700-1¾)	700-2¼ 679 (700-2¼)