

EXPRESSWAY VISUAL RWY 31

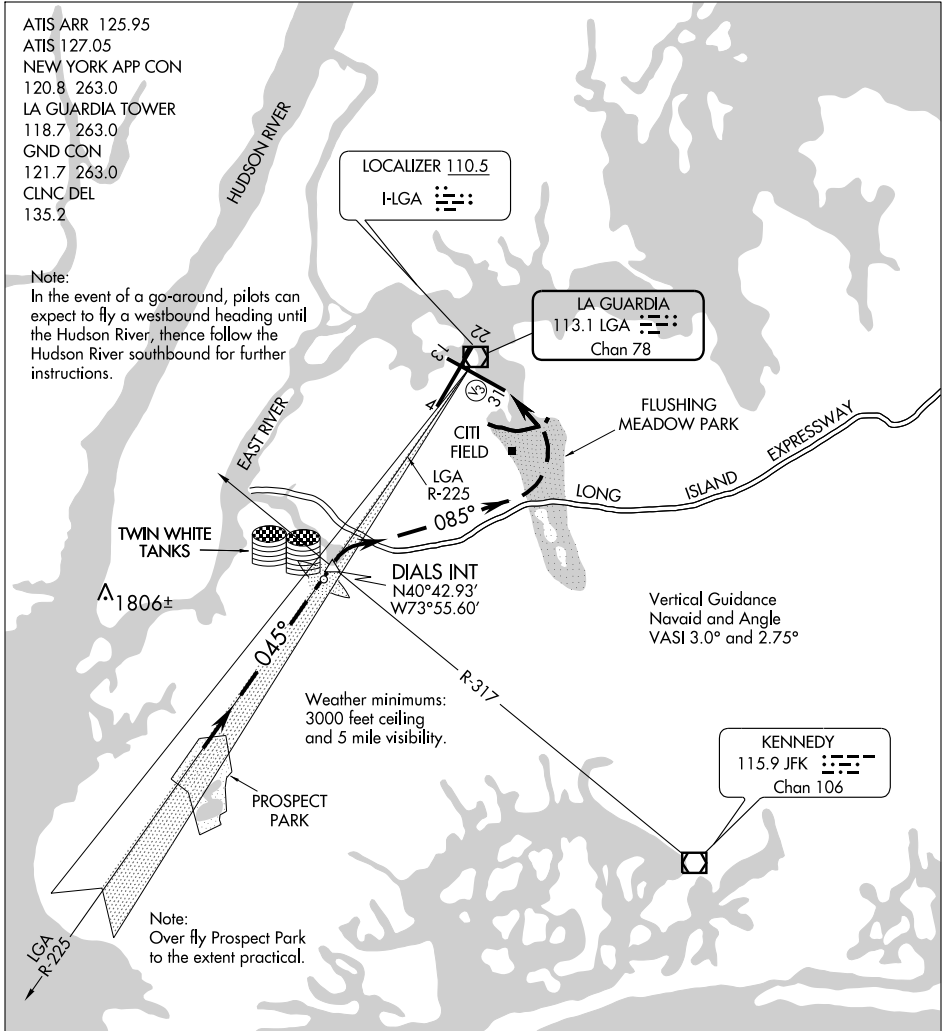
AL-289 (FAA)

NEW YORK/LA GUARDIA (LGA)
NEW YORK, NEW YORK

ATIS ARR 125.95
ATIS 127.05
NEW YORK APP CON
120.8 263.0
LA GUARDIA TOWER
118.7 263.0
GND CON
121.7 263.0
CLNC DEL
135.2

Note:

In the event of a go-around, pilots can expect to fly a westbound heading until the Hudson River, thence follow the Hudson River southbound for further instructions.



NE-2, 19 NOV 2009 to 17 DEC 2009

NE-2, 19 NOV 2009 to 17 DEC 2009

1	2	3	4	5	6	7	8	9	10	11	12	13	14	15	16
---	---	---	---	---	---	---	---	---	----	----	----	----	----	----	----

EXPRESSWAY VISUAL RWY 31

When cleared for an Expressway Approach to Rwy 31 (while on LGA VOR/DME R-225) cross DIALS INT at 2500 feet or above. Turn right at DIALS INT heading 085° and descend to Runway 31 via Long Island Expressway and Flushing Meadow Park. Use LGA Rwy 4 localizer for course guidance when LGA VOR is not available.

EXPRESSWAY VISUAL RWY 31

40°47'N-73°52'W

NEW YORK, NEW YORK
NEW YORK/LA GUARDIA (LGA)