

LOC/DME I-GDI 108.5 Chan 22	APP CRS 134°	Rwy Idg TDZE 7003 12 Apt Elev 21
--	------------------------	---

COPTER ILS or LOC RWY 13

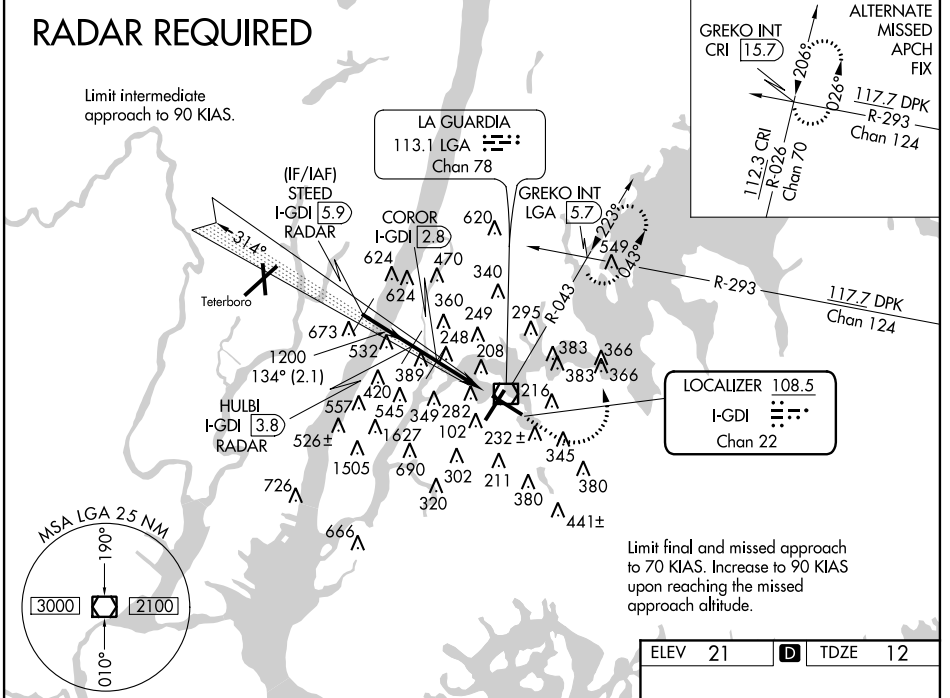
LA GUARDIA (LGA)

<p>DME or RADAR required.</p>	<p>MALS</p>	<p>MISSED APPROACH: Climb to 800 then climbing left turn to 2000 via LGA VOR/DME R-043 to GREKO INT/ LGA 5.7 DME and hold.</p>		

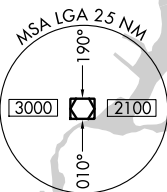
ATIS ARR 125.95	NEW YORK APP CON 120.8 263.0	LA GUARDIA TOWER 118.7 263.0	GND CON 121.7 263.0	CLNC DEL 135.2
ATIS DEP 127.05				

RADAR REQUIRED

Limit intermediate approach to 90 KIAS.

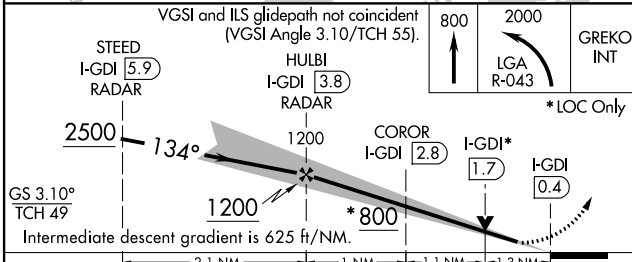


Limit final and missed approach to 70 KIAS. Increase to 90 KIAS upon reaching the missed approach altitude.

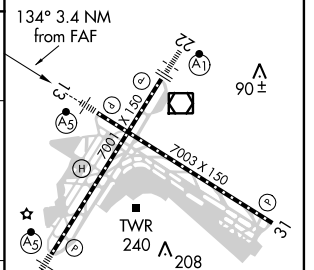


NE-2, 08 JAN 2015 to 05 FEB 2015

NE-2, 08 JAN 2015 to 05 FEB 2015



ELEV 21	D	TDZE 12
---------	----------	---------



CATEGORY	COPTER	B	C	D
H-ILS 13	212/12 200 (200-¼)		NA	
H-LOC 13	800/12 788 (800-¼)		NA	
COROR FIX MINIMUMS				
H-LOC 13	500/12 488 (500-¼)		NA	

FAF to MAP 3.4 NM					
Knots	45	60	75	90	105
Min:Sec	4:32	3:24	2:43	2:16	1:57