


# ILS or LOC RWY 4

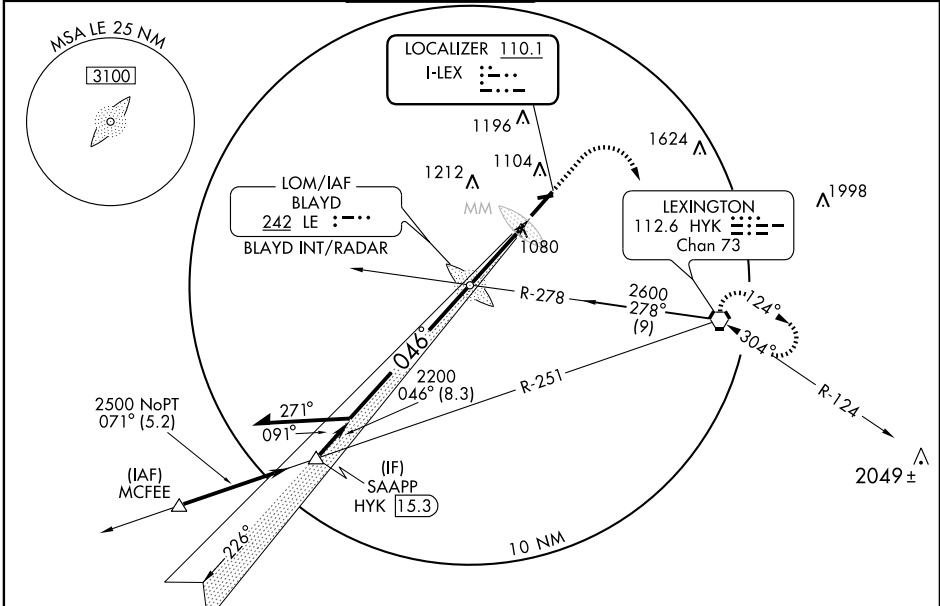
LEXINGTON/BUE GRASS (LEX)

LOC I-LEX <b>110.1</b>	APP CRS <b>046°</b>	Rwy ldg <b>6603</b> TDZE <b>971</b> Apt Elev <b>979</b>
---------------------------	------------------------	---

**⚠** Inoperative table does not apply to S-ILS. For inoperative MALSRS increase S-LOC all Cats visibility to RVR 5000. If local altimeter setting not received, use Capital City altimeter setting and increase DA to 1234 and all MDAs 80 feet. Visibility reduction by helicopters NA.

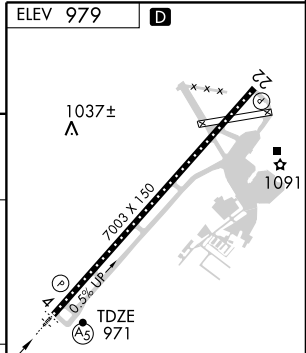
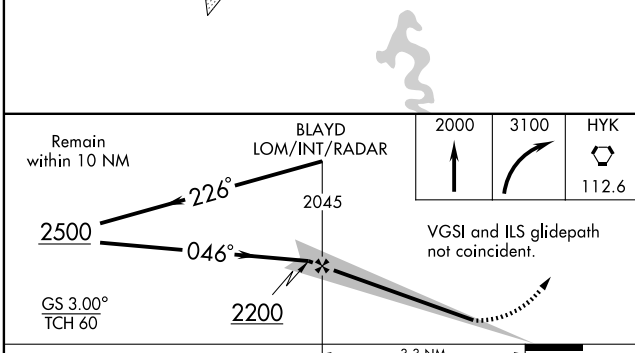
**MALSRS**  
 MISSED APPROACH: Climb to 2000, then climbing right turn to 3100 direct HYK VORTAC and hold, continue climb-in-hold to 3100.

ATIS <b>126.3</b>	LEXINGTON APP CON <b>120.15 259.3</b>	LEXINGTON TOWER <b>119.1 257.8</b>	GND CON <b>121.9</b>	CLNC DEL <b>132.35</b>	UNICOM <b>122.950</b>
----------------------	--	---------------------------------------	-------------------------	---------------------------	--------------------------



SE-1, 19 NOV 2009 to 17 DEC 2009

SE-1, 19 NOV 2009 to 17 DEC 2009



CATEGORY	A	B	C	D
S-ILS 4		1171/40	200 (200-¾)	
S-LOC 4		1300/40	329 (400-¾)	
CIRCLING	1420-1 441 (500-1)	1440-1 461 (500-1)	1440-1½ 461 (500-1½)	1540-2 561 (600-2)

FAF to MAP 3.3 NM					
Knots	60	90	120	150	180
Min:Sec	3:18	2:12	1:39	1:19	1:06