

VISTA TWO ARRIVAL

ST-237 (FAA)

LOS ANGELES INTL
LOS ANGELES, CALIFORNIA

SW-3, 08 JAN 2015 to 05 FEB 2015

SOCAL APP CON
128.1 281.4
ATIS
133.8

SEAL BEACH
115.7 SU
Chan 104
N33°47.00'-W118°03.29'

MADOW
N33°37.42'-W117°59.78'
TURBOJET VERTICAL
NAVIGATION
Expect to cross at 7000'

BAYER
N33°27.83'-W117°56.30'
TURBOJET VERTICAL
NAVIGATION
Expect to cross at 10000'

SHIVE
N33°15.97'
W117°52.00'

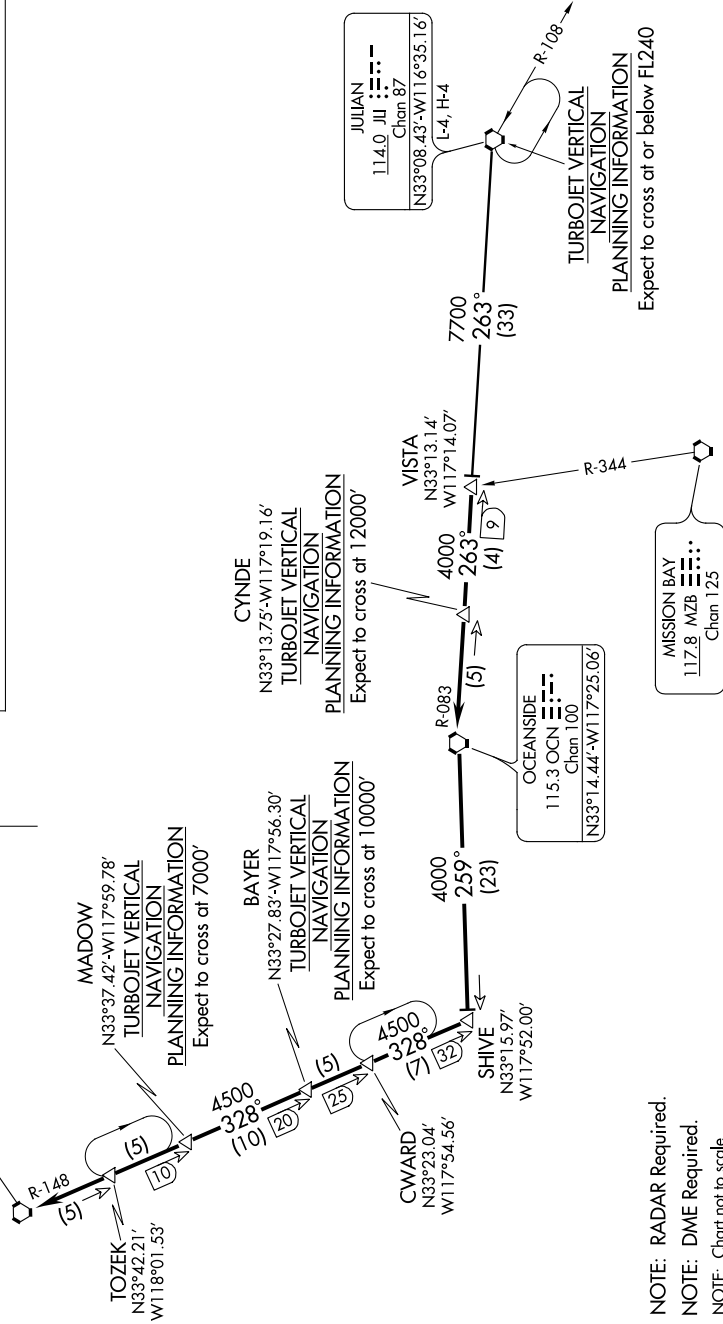
CWARD
N33°23.04'
W117°54.56'

OCEANSIDE
115.3 OCN
Chan 100
N33°14.44'-W117°25.06'

NOTE: RADAR Required.
NOTE: DME Required.
NOTE: Chart not to scale.

JULIAN TRANSITION (JLI.VISTA2): From over JLI VORTAC via JLI R-263 and OCN R-083 to VISTA INT. Thence....

....From VISTA INT OCN R-083 to OCN VORTAC. From OCN VORTAC via OCN R-259 and SJI R-148 to SJI VORTAC. Expect radar vectors to final approach course for runways 24 or 25.



SW-3, 08 JAN 2015 to 05 FEB 2015