

APP CRS	Rwy Idg	11095
251°	TDZE	104
	Apt Elev	128

RNAV (RNP) Z RWY 25L

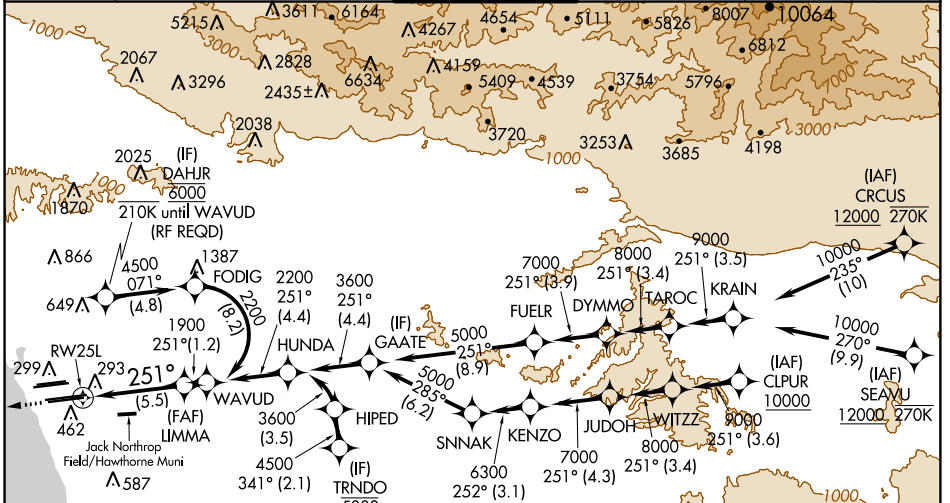
LOS ANGELES INTL (LAX)

For uncompensated Baro-VNAV systems, procedure NA below 5°C (41°F) or above 54°C (130°F). GPS required. Simultaneous approach authorized. Simultaneous approach authorized with HHR.

ALSF-2

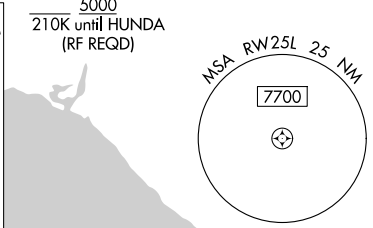
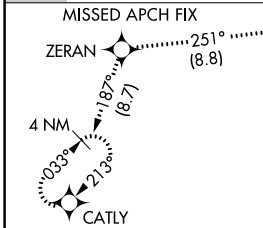
MISSED APPROACH: Climb to 2000 on track 251° to ZERAN and on track 187° to CATLY and hold.

D-ATIS	SOCAL APP CON		LOS ANGELES TOWER	GND CON	CLNC DEL	CPDLC
ARR 133.8	124.3 363.2	124.9 269.0	N 133.9 239.3	N 121.65 327.0	120.35	
DEP 135.65	124.5 235.975	128.5 360.7	S 120.95 379.1	S 121.75 327.0	327.0	
	(225°-044°)	(090°-224°)		W 121.4 327.0		
		(045°-089°)				

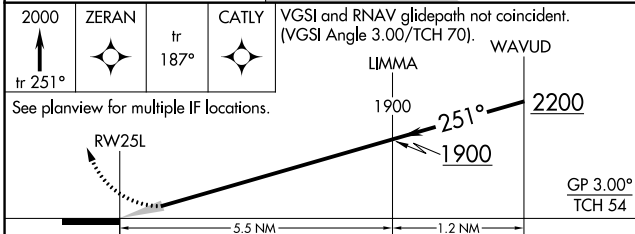


SW-3, 17 AUG 2017 to 14 SEP 2017

SW-3, 17 AUG 2017 to 14 SEP 2017

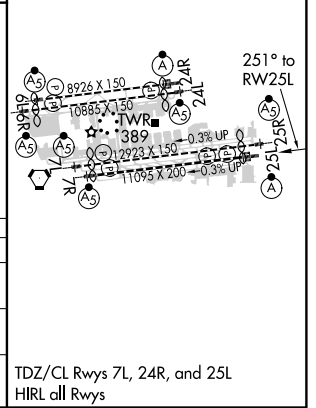


ELEV 128	D	TDZE 104
----------	----------	----------



CATEGORY	A	B	C	D
RNP 0.15 DA		445/30	341 (400- $\frac{5}{8}$)	
RNP 0.30 DA		543/50	439 (500-1)	

AUTHORIZATION REQUIRED



TDZ/CL Rwy's 7L, 24R, and 25L
HIRL all Rwy's