

APP CRS	Rwy Idg	12091
069°	TDZE	126
	Apt Elev	126

RNAV (RNP) Z RWY 7L

LOS ANGELES INTL (LAX)

NA GPS required. For uncompensated Baro-VNAV systems, procedure NA below 5°C (41°F), or above 48°C (118°F). For inoperative MALS/R, increase RNP 0.12 visibility to RVR 5000 and RNP 0.30 visibility to RVR 6000. Simultaneous approach authorized with Rwy 6L/R. Use of FD or AP providing RNAV track guidance required during simultaneous operations.

MALS/R MISSED APPROACH: Climb to 3000 via 069° track to FILBA and via 070° track to DOWNE and hold.

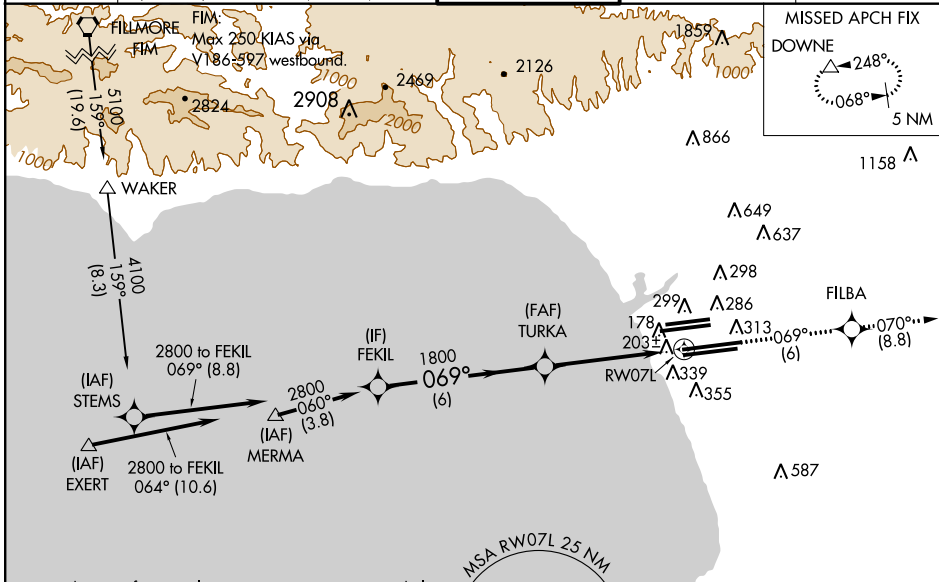
ATIS	
ARR	133.8
DEP	135.65

SOCAL APP CON	
124.3 363.2	124.9 269.0
(APCH FM WEST)	(090°-224°)
124.5 235.975	128.5 360.7
(225°-044°)	(045°-089°)

LOS ANGELES TOWER	
N 133.9 239.3	
S 120.95 379.1	

GND CON	
N 121.65 327.0	
S 121.75 327.0	
W 121.4 327.0	

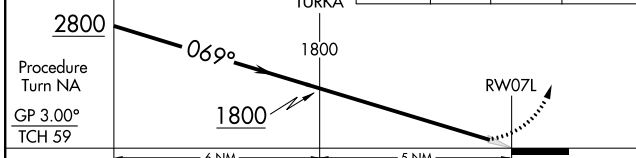
CLNC DEL	
120.35 327.0	



Procedure NA for arrivals on FIM VORTAC airway radials 148 CW 195.
 Procedure NA for arrivals at EXERT via V25 westbound, V27 northwest bound.

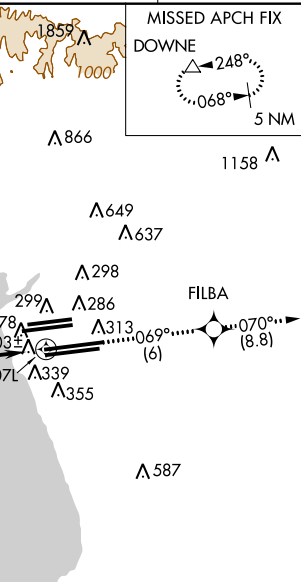
VGSI and RNAV glidepath not coincident (VGSI Angle 3.00/TCH 83).

3000	FILBA	tr 070°	DOWNE
tr 069°			

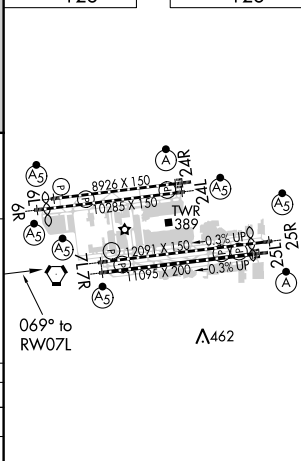


CATEGORY	A	B	C	D
RNP 0.12 DA		440/24	314 (400-½)	
RNP 0.30 DA		483/40	357 (400-¾)	

AUTHORIZATION REQUIRED



ELEV 126	TDZE 126
----------	----------



TDZ/CL Rwws 6R, 7L, 24R, and 25L
 HIRL all Rwws

SW-3, 08 JAN 2015 to 05 FEB 2015

SW-3, 08 JAN 2015 to 05 FEB 2015