


APP CRS 071°	Rwy Idg 8566
	TDZE 119
	Apt Elev 128

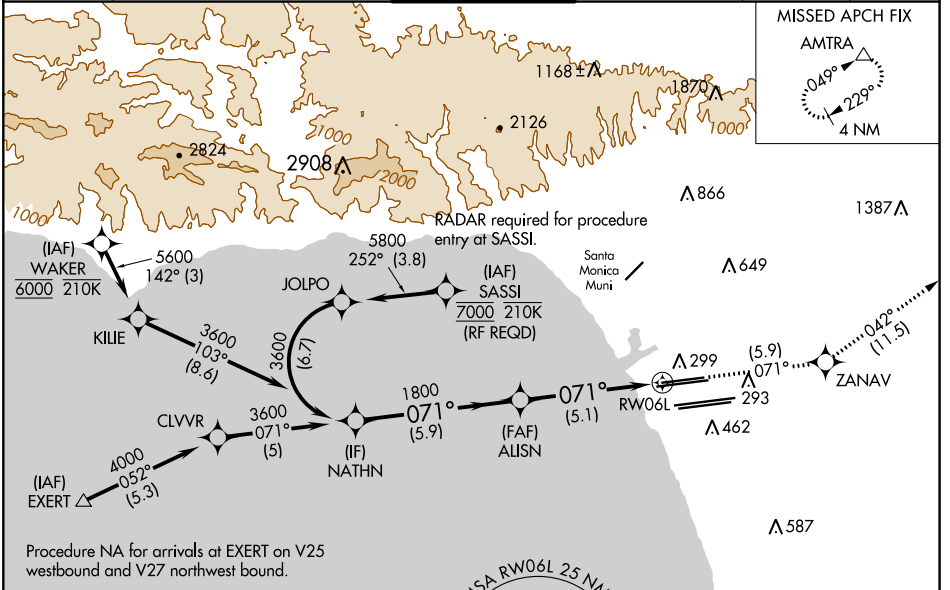
RNAV (RNP) Z RWY 6L

LOS ANGELES INTL (LAX)

▽ For uncompensated Baro-VNAV systems, procedure NA below 5°C (41°F) or above 54°C (130°F). Simultaneous approach authorized. GPS required. For inop MALS/R, increase RNP 0.30 all Cats visibility to RVR 6000.

MALS/R

MISSED APPROACH: Climb to 3000 on track 071° to ZANAV and on track 042° to AMTRA and hold.

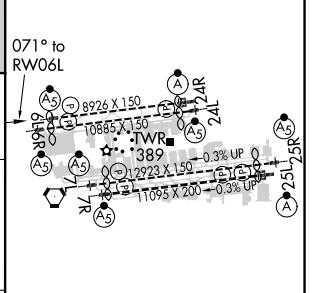
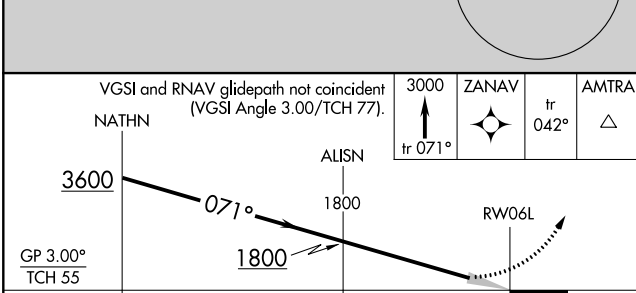
D-ATIS ARR 133.8 DEP 135.65	SOCAL APP CON 124.3 363.2 (APCH FM WEST) 124.9 269.0 (090°-224°) 124.5 235.975 (225°-044°) 128.5 360.7 (045°-089°)	LOS ANGELES TOWER N 133.9 239.3 S 120.95 379.1	GND CON N 121.65 327.0 S 121.75 327.0 W 121.4 327.0	CLNC DEL 120.35 327.0	CPDLC
---	--	--	---	---	-------



SW-3, 17 AUG 2017 to 14 SEP 2017

SW-3, 17 AUG 2017 to 14 SEP 2017

ELEV 128	D TDZE 119
----------	-------------------



CATEGORY	A	B	C	D
RNP 0.30 DA	484/40		365 (400-¾)	

AUTHORIZATION REQUIRED

TDZ/CL Rwy's 7L, 24R, and 25L
 HIRL all Rwy's