

WAAS CH 69307 W24A	APP CRS 251°	Rwy Idg TDZE Apt Elev	8925 122 128
---------------------------------	------------------------	-----------------------------	---

RNAV (GPS) Y RWY 24R

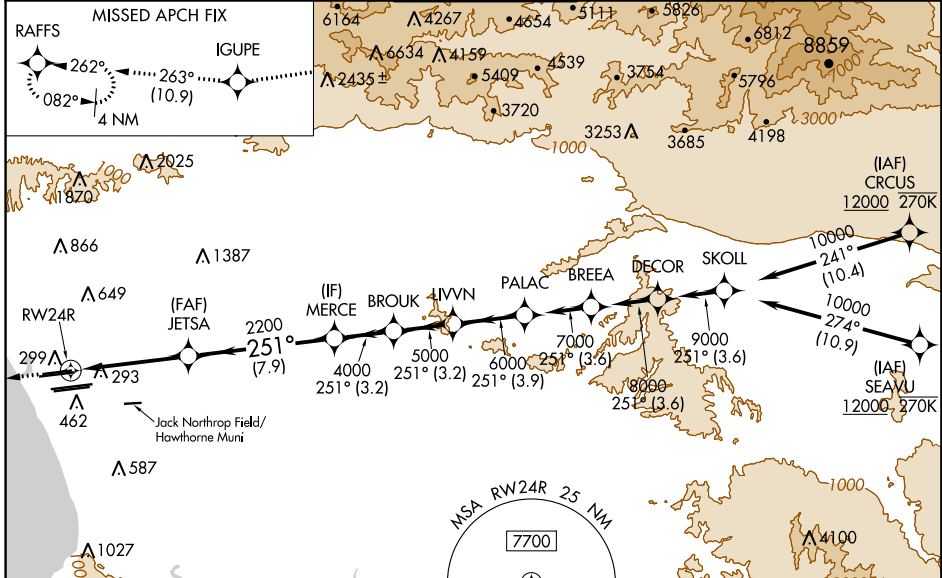
LOS ANGELES INTL (LAX)

▼ For uncompensated Baro-VNAV systems, LNAV/VNAV NA below 5°C (41°F) or above 54°C (130°F). DME/DME RNP-0.3 NA. Simultaneous approach authorized. Simultaneous approach authorized with HHR. LNAV procedure NA during simultaneous operations. Use of FD or AP providing RNAV track guidance required during simultaneous operations.

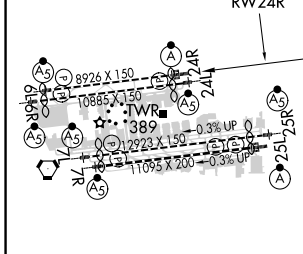


MISSED APPROACH: Climb to 2000 direct IGUPE and on track 263° to RAFFS and hold.

D-ATIS ARR 133.8 DEP 135.65	SOCAL APP CON 124.3 363.2 124.9 269.0 (090°-224°) 124.5 235.975 128.5 360.7 (045°-089°)	LOS ANGELES TOWER N 133.9 239.3 S 120.95 379.1	GND CON N 121.65 327.0 S 121.75 327.0 W 121.4 327.0	CLNC DEL 120.35 327.0	CPDLC
---	---	--	---	---	-------



ELEV 128	D	TDZE 122
----------	----------	----------



2000	IGUPE	tr 263°	RAFFS	VGSI and RNAV glidepath not coincident (VGSI Angle 3.00/TCH 73).
*LNAV only		JETSA		PALAC
*1.5 NM to RWY 24R		MERCE		BROUK
RWY 24R		LIVVN		PALAC
2200		4000		5000
2200		6000		7000
GP 3.00°		TCH 55		

CATEGORY	A	B	C	D
LPV DA		322/24	200 (200-½)	
LNAV/VNAV DA		587/60	465 (500-¼)	
LNAV MDA	660/24	538 (600-½)	660/55	538 (600-¼)

SW-3, 14 SEP 2017 to 12 OCT 2017

SW-3, 14 SEP 2017 to 12 OCT 2017