

WAAS CH 49007 W25B	APP CRS 251°	Rwy Idg TDZE 104 Apt Elev 128	11134
--	------------------------	---	--------------

RNAV (GPS) RWY 25R

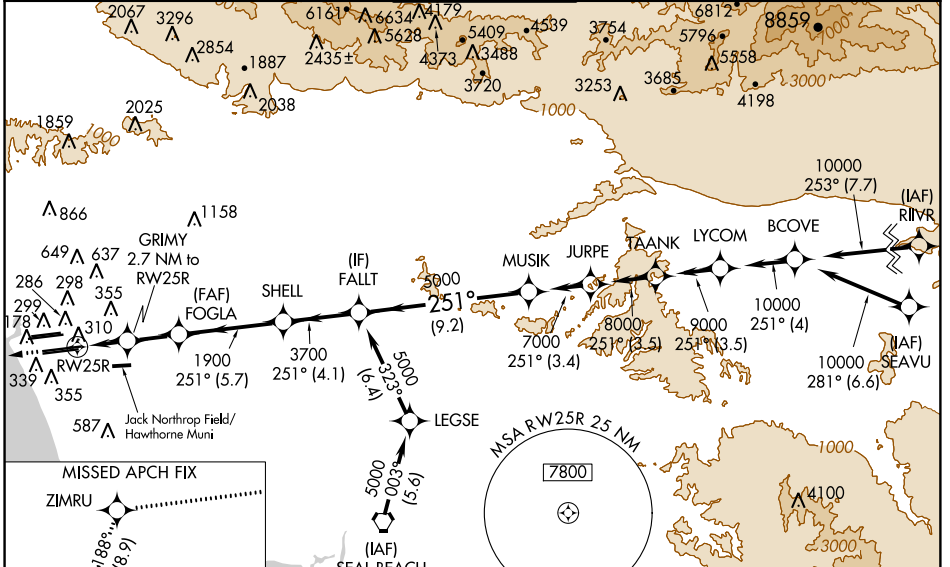
LOS ANGELES INTL (LAX)

▼ For uncompensated Baro-VNAV systems, LNAV/VNAV NA below -15°C (5°F) or above 54°C (130°F). DME/DME RNP-0.3 NA. For inop MALSr, increase LPV all Cats visibility to RVR 4500. Simultaneous approach authorized. Simultaneous approach authorized with HHR 25. LNAV only approach NA during simultaneous operations. Use of FD or AP providing RNAV track guidance required during simultaneous operations.



MISSED APPROACH:
Climb to 2000 direct ZIMRU and on track 188° to CATLY and hold.

D-ATIS ARR 133.8 DEP 135.65	SOCAL APP CON 124.3 363.2 (APCH FM WEST) [225°-044°]	124.9 269.0 (090°-224°)	LOS ANGELES TOWER N 133.9 239.3 S 120.95 379.1	GND CON N 121.65 327.0 S 121.75 327.0 W 121.4 327.0	CLNC DEL 120.35 327.0	CPDLC
---	---	----------------------------	--	---	---	-------



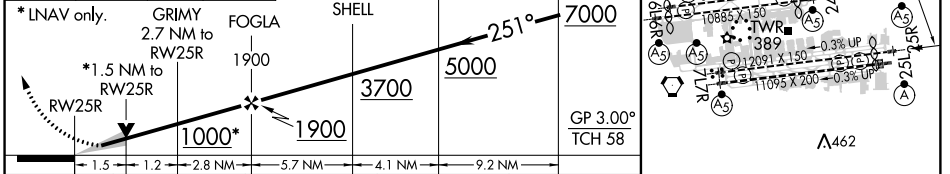
SW-3, 27 APR 2017 to 25 MAY 2017

SW-3, 27 APR 2017 to 25 MAY 2017

ELEV 128	D TDZE 104
----------	-------------------

Procedure NA for arrival on SLI VORTAC airway radials 272 CW 080.

2000	ZIMRU	tr 188°	CATLY	VGSJ and RNAV glidepath not coincident (VGSJ Angle 3.00/TCH 75).
------	-------	---------	-------	--



CATEGORY	A	B	C	D
LPV DA		371/24	267 (300-½)	
LNAV/VNAV DA		578/60	474 (500-1½)	
LNAV MDA	640/24	536 (600-½)	640/55	536 (600-1¼)

TDZ/CL Rwy's 7L, 24R, and 25L
HIRL all Rwy's