

LOC/DME I-FCFN <b>111.1</b> Chan <b>48</b>	APP CRS <b>251°</b>	Rwy Idg TDZE Apt Elev	25R <b>11134</b> <b>104</b> <b>128</b>	25L <b>11095</b> <b>104</b> <b>128</b>
--	------------------------	-----------------------------	---	---

# ILS or LOC RWY 25R

LOS ANGELES INTL (LAX)

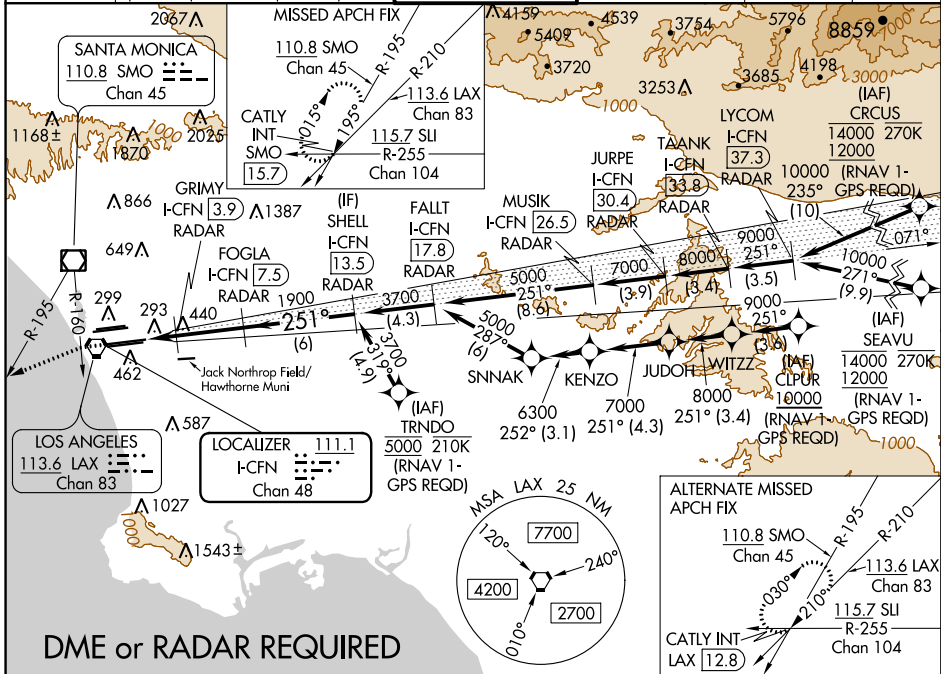
Simultaneous approach authorized.  
 Simultaneous approach authorized with HHR.  
 DME or RADAR required. For inop ALS increase Sidestep 25L  
 Cat C visibility to 1½ SM.  
 # RVR 1800 authorized with use of FD or AP or HUD to DA.

MALSR Rwy 25R

ALSF-2 Rwy 25L

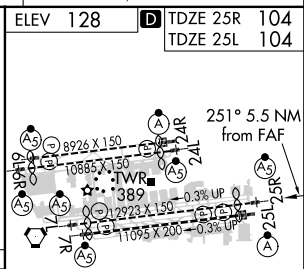
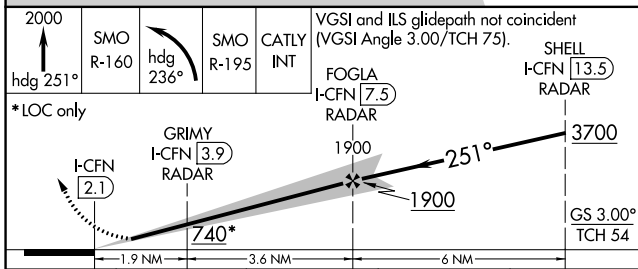
MISSED APPROACH: Climb to 2000 on heading 251° until crossing SMO R-160 then left turn on heading 236° and SMO VOR/DME R-195 to CATLY INT/SMO 15.7 DME and hold.

D-ATIS ARR <b>133.8</b> DEP <b>135.65</b>	SOCAL APP CON <b>124.3 363.2</b> <b>124.5 235.975</b> <small>(225°-044°)</small>	CON <b>124.9 269.0</b> <b>128.5 360.7</b> <small>(090°-224°)</small> <small>(045°-089°)</small>	LOS ANGELES TOWER <b>N 133.9 239.3</b> <b>S 120.95 379.1</b>	GND CON <b>N 121.65 327.0</b> <b>S 121.75 327.0</b> <b>W 121.4 327.0</b>	CLNC DEL <b>120.35</b> <b>327.0</b>	CPDLC
---	---	---	--	---	---	-------



SW-3, 17 AUG 2017 to 14 SEP 2017

SW-3, 17 AUG 2017 to 14 SEP 2017



CATEGORY	A	B	C	D
S-ILS 25R#	304/24 200 (200-½)			
S-LOC 25R	700/24 596 (600-½)	700-1¼ 596 (600-1¼)		
SIDESTEP 25L	700/55 596 (600-½)	700-1¼ 596 (600-½)	700-1½ 596 (600-1½)	

ELEV 128	TDZE 25R 104	TDZE 25L 104			
TDZ/CL Rws 7L, 24R, and 25L HIRL all Rws					
FAF to MAP 5.5 NM					
Knots	60	90	120	150	180
Min:Sec	5:30	3:40	2:45	2:12	1:50