

LOS ANGELES, CALIFORNIA

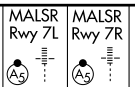
AL-237 (FAA)

LOC/DME I-AS <b>111.1</b> Chan 48	APP CRS <b>069°</b>	Rwy Idg 7L <b>12091</b> TDZE <b>126</b> Apt Elev <b>126</b>	Rwy Idg 7R <b>11095</b> TDZE <b>125</b> Apt Elev <b>126</b>
---	------------------------	---	---

# ILS or LOC RWY 7L

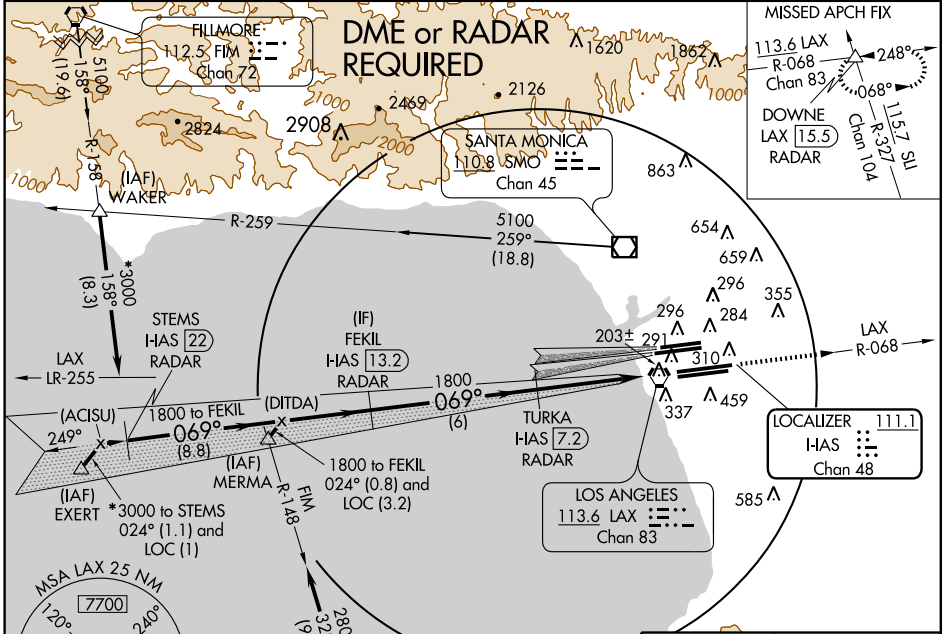
LOS ANGELES INTL (LAX)

**▼** Inoperative table does not apply to Sidestep Rwy 7R Cats. A and B.  
Simultaneous approach authorized with Rwy 6L/R.  
LOC procedure NA during simultaneous operations.



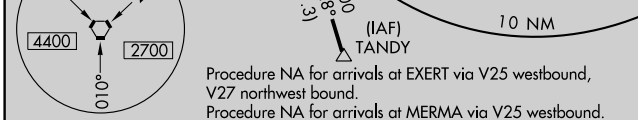
MISSED APPROACH: Climb to 3000 via LAX VORTAC R-068 to DOWNE INT/ LAX 15.5 DME/RADAR and hold.

ATIS ARR <b>133.8</b> DEP <b>135.65</b>	<b>124.3 363.2</b> SOCAL APP CON <b>124.9 269.0</b> (090°-224°) <b>128.5 360.7</b> (045°-089°)	LOS ANGELES TOWER <b>N 133.9 239.3</b> <b>S 120.95 379.1</b>	GND CON <b>N 121.65 327.0</b> <b>S 121.75 327.0</b>	CLNC DEL <b>121.4 327.0</b>
---	---	--	---	--------------------------------

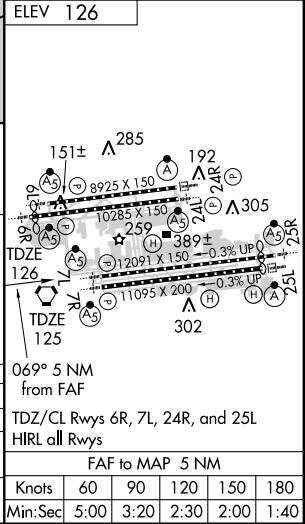


SW-3, 19 NOV 2009 to 17 DEC 2009

SW-3, 19 NOV 2009 to 17 DEC 2009



Procedure Turn NA	STEMS I-AS 22 RADAR	FEKIL I-AS 13.2 RADAR	TURKA I-AS 7.2 RADAR	3000 LAX R-068	DOWNE
GS 3.00° TCH 59	1800	1800	1800	I-AS 3.2	I-AS 2.1
	8.8 NM	6 NM	3.9 NM	1.1	



CATEGORY	A	B	C	D
S-ILS 7L	327/18 201 (300-1/2)			
S-LOC 7L	520/24 394 (400-1/2)		520/40 394 (400-3/4)	
SIDESTEP RWY 7R	520/50 395 (400-1)		520-1 1/2 395 (400-1 1/2)	

LOS ANGELES, CALIFORNIA  
Amdt 7 09239

33°57'N-118°24'W

# LOS ANGELES INTL (LAX)

## ILS or LOC RWY 7L